

# HEXAGON GRID

Wallcoverings » Commercial Wallcoverings

---



Brand: **Koroseal**

Applications: **Walls**

1300 306 399

[info@baresque.com.au](mailto:info@baresque.com.au)

[baresque.com.au](http://baresque.com.au)

1 of 4

# HEXAGON GRID

Wallcoverings » Commercial Wallcoverings

Hexagon Grid is a 137cm wide wallcovering with a micro quatrefoil pattern that's available in 18 colours. It's versatile, durable and easy to clean.

## ✓ Bleach Cleanable

**Composition** Vinyl face on a fabric backing 20oz (452 g/m<sup>2</sup>)

**Environmental Info** Formaldehyde free

Heavy metals free

Perfluorooctanoic acid free

No solvent inks

Low VOC emissions. Any VOCs dissipate quickly (faster than paint) through normal ventilation and have no recognized adverse impact on indoor air quality.

Durability means products do not need to be replaced regularly due to wear and tear and being cleanable, vinyl products are ideal for helping keep commercial environments clean of bacteria.

Baresque will only deal with vinyl manufacturers that comply with applicable state and federal regulations, provide a factory that is safe and clean for its employees to work in, recycle scrap and inks during the manufacturing process to minimize waste related to production.

**Pattern Repeat Size** 0.6cm V / 0.6cm H

**Roll Size** 137cm wide x 27.4m - Available by the lineal metre

**Fire Rating** Tested in accordance with AS ISO 9705 2003 for the purpose of determining the Group Number classification as required by the Building Code of Australia for the control of fire spread on interior wall and ceiling linings.

The result achieved was:

Classification - Group 2

Specific Extinction - Less than 250m<sup>2</sup>/kg

**Lead Time**

- 2-weeks (approx.) from Wednesday, subject to stock availability.
- Additional 1-week for Western Australia.
- Express delivery is available subject to a surcharge. Contact Baresque for details and pricing.

# HEXAGON GRID

Wallcoverings » Commercial Wallcoverings

---

## Suggested Installation

Non reverse hang/overlap double cut.

Baresque recommends and supplies Roman brand adhesives and primers.

---

## Care Instructions

Use cloth with any of the following in preferred order of use:

1: Clear warm water

2: Mild solution of liquid detergent and warm water

3: Isopropyl Alcohol (a.k.a. rubbing alcohol)

Remove any detergent with a clean, damp cloth. Gently pat dry.

For more difficult stains, dampen a soft white cloth with a solution of household bleach (10% bleach / 90% water). Rub gently.

Rinse with a water dampened cloth to remove bleach concentration.

Do not use solvent based or concentrated abrasive cleaning agents, lacquer thinners or nail polish remover as these may cause discolouration over a period of time.

Always test in an inconspicuous area first.

If care instructions don't deliver the expected results, cease cleaning method immediately and contact Baresque for assistance.

---

## Warranty

5-year warranty. Visit [baresque.com.au/warranty](https://www.baresque.com.au/warranty) for complete details.

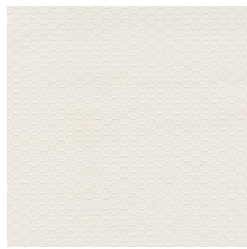
---

# HEXAGON GRID

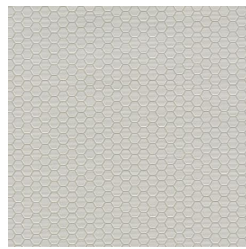
Wallcoverings » Commercial Wallcoverings

## Colour & Finish Options

### COLOURWAY CARD



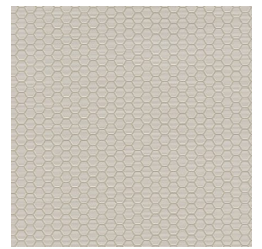
7422-08 PEGASUS



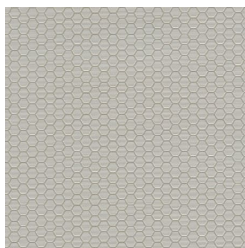
7422-12 LUNA



7422-20 THEIA



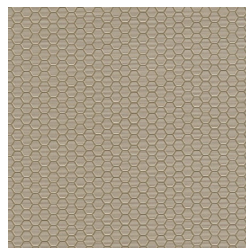
7422-26 ERATO



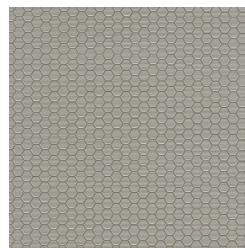
7422-33 ELECTRA



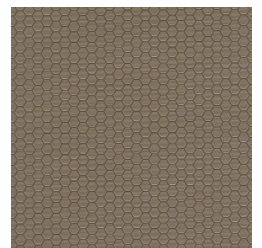
7422-40 HARMONIA



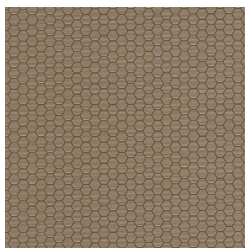
7422-50 AEDOS



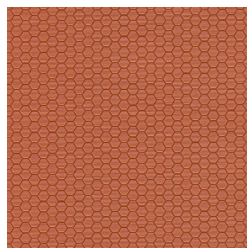
7422-55 POSEIDON



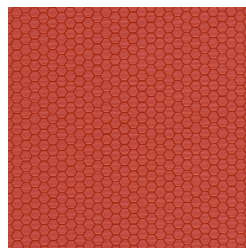
7422-58 HECTOR



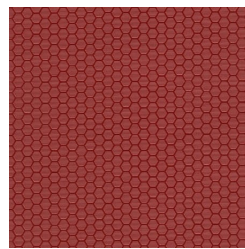
7422-59 ERANUS



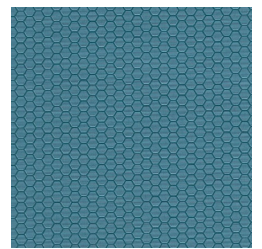
7422-61 HELIOS



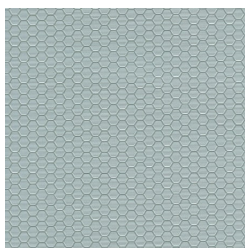
7422-65 PANDORAS



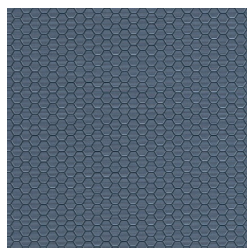
7422-68 EROS



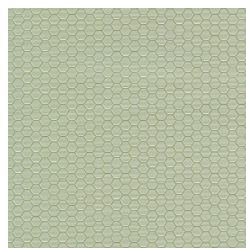
7422-71 OCEANUS



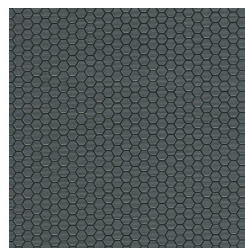
7422-72 ZEUS



7422-79 ORPHEUS



7422-83 CHLORIS



7422-91 ARTEMIS