

# HEAVY METAL

Wallcoverings » Commercial Wallcoverings



Brand: **Symphony**

Applications: **Walls**

1300 306 399

[info@baresque.com.au](mailto:info@baresque.com.au)

[baresque.com.au](http://baresque.com.au)

1 of 4

# HEAVY METAL

Wallcoverings » Commercial Wallcoverings

Heavy Metal is a 137cm wide wallcovering with a unique design that creates an acid-concrete or burnished metal impression. Available in 19 colours.

✓ **Bleach Cleanable**

Description	Gradations of colour within this unique design create an acid-washed concrete or burnished metal influence and can work on a statement wall or as a background player.
Composition	Vinyl face on a fabric backing Equivalent to 20oz (452 g/m <sup>2</sup> )
Environmental Info	<p>Formaldehyde free</p> <p>Heavy metals free</p> <p>Perfluorooctanoic acid free</p> <p>No solvent inks</p> <p>Low VOC emissions. Any VOCs dissipate quickly (faster than paint) through normal ventilation and have no recognized adverse impact on indoor air quality.</p> <p>Durability means products do not need to be replaced regularly due to wear and tear and being cleanable, vinyl products are ideal for helping keep commercial environments clean of bacteria.</p> <p>Baresque will only deal with vinyl manufacturers that comply with applicable state and federal regulations, provide a factory that is safe and clean for its employees to work in, recycle scrap and inks during the manufacturing process to minimize waste related to production.</p>
Pattern Repeat Size	N/A
Roll Size	137cm wide x 27.4m - Available by the lineal metre
Fire Rating	<p>Tested in accordance with AS ISO 9705 2003 for the purpose of determining the Group Number classification as required by the Building Code of Australia for the control of fire spread on interior wall and ceiling linings.</p> <p>The result achieved was: Classification - Group 2 Specific Extinction - Less than 250m<sup>2</sup>/kg</p>

# HEAVY METAL

Wallcoverings » Commercial Wallcoverings

---

## Lead Time

- 2-weeks (approx.) from Wednesday, subject to stock availability.
  - Additional 1-week for Western Australia.
  - Express delivery is available subject to a surcharge. Contact Baresque for details and pricing.
- 

## Care Instructions

Use cloth with any of the following in preferred order of use:

1: Clear warm water

2: Mild solution of liquid detergent and warm water

3: Isopropyl Alcohol (a.k.a. rubbing alcohol)

Remove any detergent with a clean, damp cloth. Gently pat dry.

For more difficult stains, dampen a soft white cloth with a solution of household bleach (10% bleach / 90% water). Rub gently.

Rinse with a water dampened cloth to remove bleach concentration.

Do not use solvent based or concentrated abrasive cleaning agents, lacquer thinners or nail polish remover as these may cause discolouration over a period of time.

Always test in an inconspicuous area first.

If care instructions don't deliver the expected results, cease cleaning method immediately and contact Baresque for assistance.

---

## Warranty

5-year warranty. Visit [baresque.com.au/warranty](https://baresque.com.au/warranty) for complete details.

---



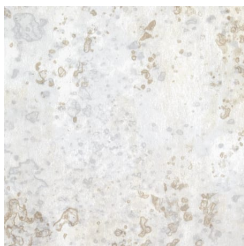
# HEAVY METAL

Wallcoverings » Commercial Wallcoverings

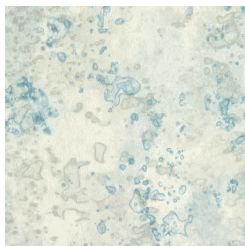
## Colour & Finish Options

### COLOURWAY CARD

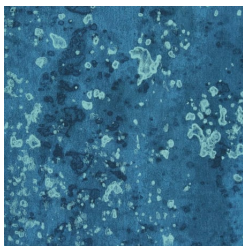
COLOURWAY CARD



AZ53160 GUITAR SOLO



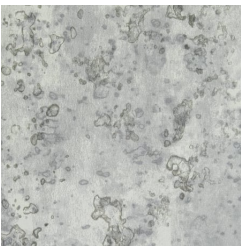
AZ53161 TAINTED TEAL



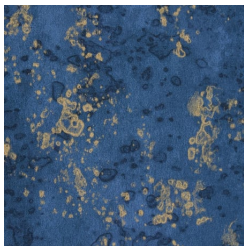
AZ53162 SAPPHIRE SLAYER



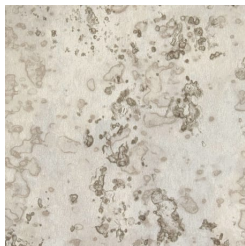
AZ53163 ROLLING STONE



AZ53164 STEEL STRINGS



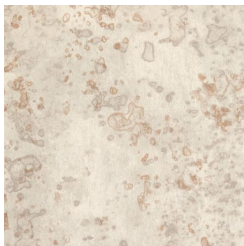
AZ53165 MOTLEY BLUE



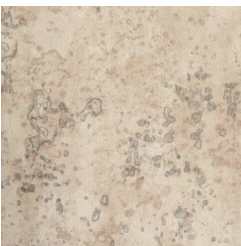
AZ53167 GROUPIE GREIGE



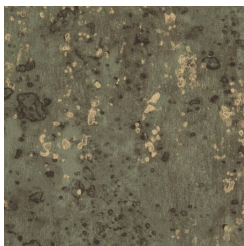
AZ53168 LIQUID STEEL



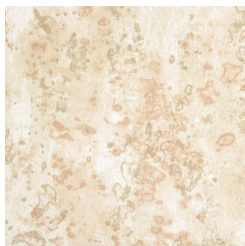
AZ53169 BEIGE BAND



AZ53170 LIGHT LED



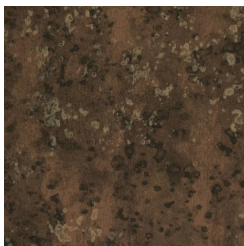
AZ53171 OZZY OLIVE



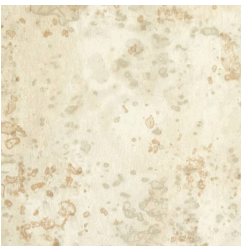
AZ53172 TOUR BUS TAN



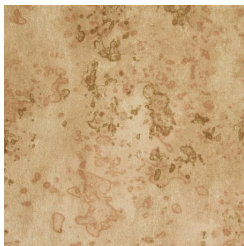
AZ53173 TWISTED TAUPE



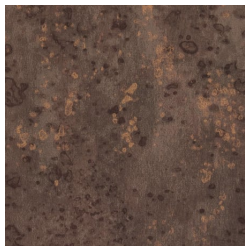
AZ53174 BACKSTAGE BROWN



AZ53175 CREAM CONCERT



AZ53176 GRAMMY GOLD



AZ53177 HEADBANGER BRONZE



AZ53178 PLATINUM RECORD