

# GLITTERIN

Wallcoverings » Commercial Wallcoverings

---



Brand: **Symphony**

Applications: **Walls**

# GLITTERIN

Wallcoverings » Commercial Wallcoverings

Glitterin is a 132cm wide wallcovering that's available in 19 colourways. It's versatile, durable and cleanable with warm water and liquid detergent.

## ✓ Bleach Cleanable

Composition	Vinyl face on a fabric backing 20oz (452 g/m <sup>2</sup> )
-------------	---

Environmental Info	<p>Formaldehyde free</p> <p>Heavy metals free</p> <p>Perfluorooctanoic acid free</p> <p>No solvent inks</p> <p>Low VOC emissions. Any VOCs dissipate quickly (faster than paint) through normal ventilation and have no recognized adverse impact on indoor air quality.</p> <p>Durability means products do not need to be replaced regularly due to wear and tear and being cleanable, vinyl products are ideal for helping keep commercial environments clean of bacteria.</p> <p>Baresque will only deal with vinyl manufacturers that comply with applicable state and federal regulations, provide a factory that is safe and clean for its employees to work in, recycle scrap and inks during the manufacturing process to minimize waste related to production.</p>
--------------------	--

Pattern Repeat Size	N/A
---------------------	-----

Roll Size	132cm wide X 27.4m- Available by the lineal metre.
-----------	--

Fire Rating	<p>Tested in accordance with AS ISO 9705 2003 for the purpose of determining the Group Number classification as required by the Building Code of Australia for the control of fire spread on interior wall and ceiling linings.</p> <p>The result achieved was: Classification - Group 2 Specific Extinction - Less than 250m<sup>2</sup>/kg</p>
-------------	--

Lead Time	<ul style="list-style-type: none"><li>• 2-weeks (approx.) from Wednesday, subject to stock availability.</li><li>• Additional 1-week for Western Australia.</li><li>• Express delivery is available subject to a surcharge. Contact Baresque for details and pricing.</li></ul>
-----------	---

# GLITTERIN

Wallcoverings » Commercial Wallcoverings

---

## Suggested Installation

Reverse hang / overlap and double cut.

Baresque recommends and supply Roman brand adhesives and primers.

---

## Care Instructions

Use cloth with any of the following in preferred order of use:

1: Clear warm water

2: Mild solution of liquid detergent and warm water

3: Isopropyl Alcohol (a.k.a. rubbing alcohol)

Remove any detergent with a clean, damp cloth. Gently pat dry.

For more difficult stains, dampen a soft white cloth with a solution of household bleach (10% bleach / 90% water). Rub gently.

Rinse with a water dampened cloth to remove bleach concentration.

Do not use solvent based or concentrated abrasive cleaning agents, lacquer thinners or nail polish remover as these may cause discolouration over a period of time.

Always test in an inconspicuous area first.

If care instructions don't deliver the expected results, cease cleaning method immediately and contact Baresque for assistance.

---

## Warranty

5-year warranty. Visit [baresque.com.au/warranty](https://baresque.com.au/warranty) for complete details.

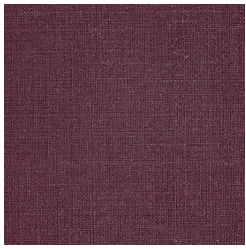
---



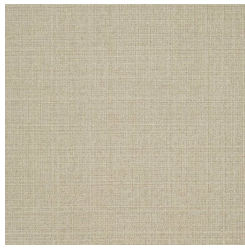
# GLITTERIN

Wallcoverings » Commercial Wallcoverings

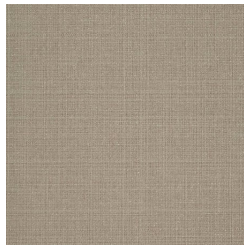
## Colour & Finish Options



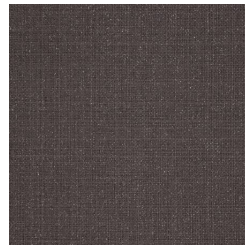
AZ53242 SUGARPLUM



AZ53243 CORNSILK



AZ53244 DUSK



AZ53245 KOHL



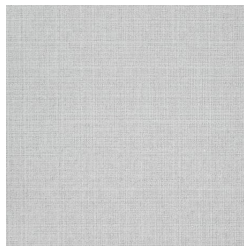
AZ53246 HORIZON



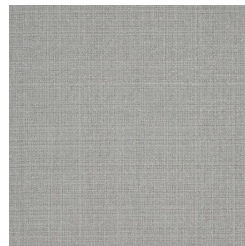
AZ53247 MALT



AZ53248 WICKER



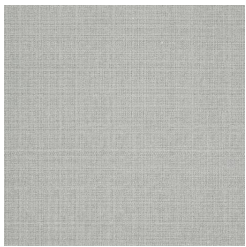
AZ53249 CLOUD



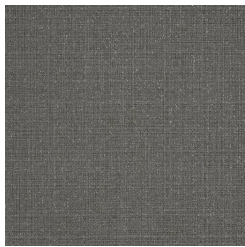
AZ53250 VAPOR



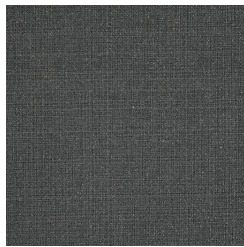
AZ53251 CHINCHILLA



AZ53252 MIST



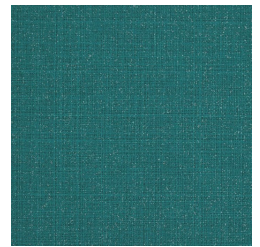
AZ53253 GRANITE



AZ53254 SPRUCE



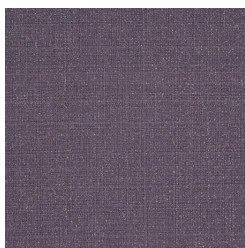
AZ53255 LIMELIGHT



AZ53256 SEA GLASS



AZ53257 MARINE  
GREEN



AZ53258 ROYAL



AZ53241 MINK



AZ53240 FAWN