

GLINT

Wallcoverings » Commercial Wallcoverings



Brand: **Genon**

Applications: **Walls**

1300 306 399

info@baresque.com.au

baresque.com.au

1 of 5

GLINT

Wallcoverings » Commercial Wallcoverings

Glint is a 137cm wide wallcovering that's available in 24 colourways. It's versatile, durable and cleanable with warm water and liquid detergent.

✓ **Bleach Cleanable**

✓ **Low VOC**

Composition	Vinyl face on a fabric backing 20oz (452 g/m ²)
-------------	---

Environmental Info

Formaldehyde free

Heavy metals free

Perfluorooctanoic acid free

No solvent inks

Low VOC emissions. Any VOCs dissipate quickly (faster than paint) through normal ventilation and have no recognized adverse impact on indoor air quality.

Durability means products do not need to be replaced regularly due to wear and tear and being cleanable, vinyl products are ideal for helping keep commercial environments clean of bacteria.

Baresque will only deal with vinyl manufacturers that comply with applicable state and federal regulations, provide a factory that is safe and clean for its employees to work in, recycle scrap and inks during the manufacturing process to minimize waste related to production.

Roll Size

137cm wide x 27.4m - Available by the lineal metre

Fire Rating

Tested in accordance with AS ISO 9705 2003 for the purpose of determining the Group Number classification as required by the Building Code of Australia for the control of fire spread on interior wall and ceiling linings.

The result achieved was:

Classification - Group 2

Specific Extinction - Less than 250m²/kg

Lead Time

- 2-weeks (approx.) from Wednesday, subject to stock availability.
- Additional 1-week for Western Australia.
- Express delivery is available subject to a surcharge. Contact Baresque for details and pricing.

Suggested Installation

Reverse hang / overlap and double cut.

Baresque recommends and supply Roman brand adhesives and primers.

GLINT

Wallcoverings » Commercial Wallcoverings

Care Instructions

Use cloth with any of the following in preferred order of use:

- 1: Clear warm water
- 2: Mild solution of liquid detergent and warm water
- 3: Isopropyl Alcohol (a.k.a. rubbing alcohol)

Remove any detergent with a clean, damp cloth. Gently pat dry.

For more difficult stains, dampen a soft white cloth with a solution of household bleach (10% bleach / 90% water). Rub gently.

Rinse with a water dampened cloth to remove bleach concentration.

Do not use solvent based or concentrated abrasive cleaning agents, lacquer thinners or nail polish remover as these may cause discolouration over a period of time.

Always test in an inconspicuous area first.

If care instructions don't deliver the expected results, cease cleaning method immediately and contact Baresque for assistance.

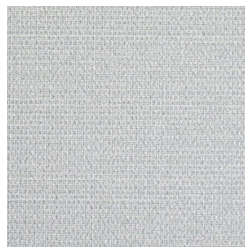
Warranty

5-year warranty. Visit baresque.com.au/warranty for complete details.

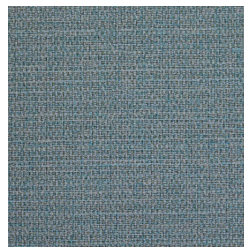
Colour & Finish Options

COLOURWAY CARD

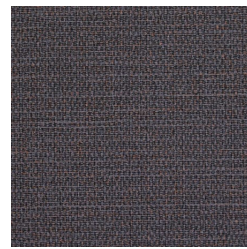
COLOURWAY CARD



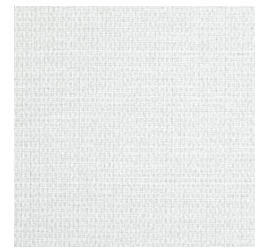
W2-GN-01 SILVER
SURF



W2-GN-02 RENDEZ-
BLUE



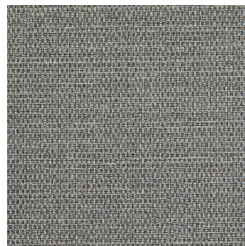
W2-GN-03
MOROCCAN NIGHT



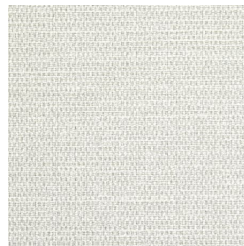
W2-GN-04 BARELY
THERE



W2-GN-05 EXOTIC
GREY



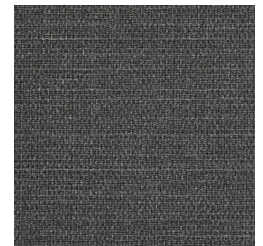
W2-GN-06 ARMOR



W2-GN-07 FEATHER
WHITE



W2-GN-08 VINTAGE
STERLING



W2-GN-09 KOHL



W2-GN-10 MELLOW
WHITE



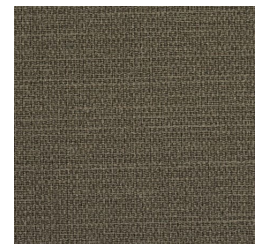
W2-GN-12 MYSTIC
BLACK



W2-GN-13 TRIBAL
TAN



W2-GN-14
WINTERGREEN



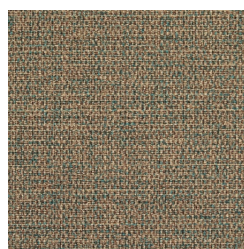
W2-GN-15 ANTIQUE
MOSS



W2-GN-16
MARRAKESH SAND



W2-GN-17 HONEY



W2-GN-18 CRAFTED
GOLD



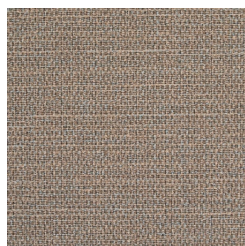
W2-GN-19 NATURAL



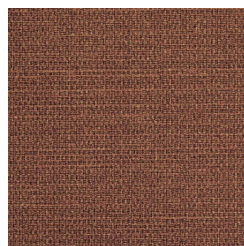
W2-GN-20 AZTEC
BROWN



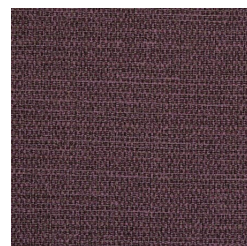
W2-GN-21 FRENCH



W2-GN-22



W2-GN-23 SUNLIT



W2-GN-24 WILD

GLINT

Wallcoverings » Commercial Wallcoverings

TOAST

TRANSCEND TAN

COPPER

FLOWER