

GALERIE

Wallcoverings » Commercial Wallcoverings



Brand: **Koroseal**

Applications: **Walls**

1300 306 399

info@baresque.com.au

baresque.com.au

1 of 5

GALERIE

Wallcoverings » Commercial Wallcoverings

Galerie is a 137cm wide wallcovering with textured vertical lines that's available in 30 colourways. It's versatile, durable and easy to clean.

✓ **Bleach Cleanable**

Description Galerie is enhanced with the colours of a painter's pallet. The troweled vertical lines of the texture pick up the colours in rich, brilliant tones. Galerie reminds us of the stolen beauty of the past coloured to perfection. Tie back with Shibori Chevron.

Composition Vinyl face on a fabric backing

Environmental Info

- Formaldehyde free
- Heavy metals free
- Perfluorooctanoic acid free
- No solvent inks

Low VOC emissions. Any VOCs dissipate quickly (faster than paint) through normal ventilation and have no recognized adverse impact on indoor air quality.

Durability means products do not need to be replaced regularly due to wear and tear and being cleanable, vinyl products are ideal for helping keep commercial environments clean of bacteria.

Baresque will only deal with vinyl manufacturers that comply with applicable state and federal regulations, provide a factory that is safe and clean for its employees to work in, recycle scrap and inks during the manufacturing process to minimize waste related to production.

Pattern Repeat Size N/A

Roll Size 137cm wide x 27.4m - Available by the lineal metre

Fire Rating Tested in accordance with AS ISO 9705 2003 for the purpose of determining the Group Number classification as required by the Building Code of Australia for the control of fire spread on interior wall and ceiling linings.

The result achieved was:
Classification - Group 2
Specific Extinction - Less than 250m²/kg

GALERIE

Wallcoverings » Commercial Wallcoverings

Lead Time

- 2-weeks (approx.) from Wednesday, subject to stock availability.
- Additional 1-week for Western Australia.
- Express delivery is available subject to a surcharge. Contact Baresque for details and pricing.

Suggested Installation

Non reverse hang/overlap double cut.

Baresque recommends and supplies Roman brand adhesives and primers.

Care Instructions

Use cloth with any of the following in preferred order of use:

- 1: Clear warm water
- 2: Mild solution of liquid detergent and warm water
- 3: Isopropyl Alcohol (a.k.a. rubbing alcohol)

Remove any detergent with a clean, damp cloth. Gently pat dry.

For more difficult stains, dampen a soft white cloth with a solution of household bleach (10% bleach / 90% water). Rub gently.

Rinse with a water dampened cloth to remove bleach concentration.

Do not use solvent based or concentrated abrasive cleaning agents, lacquer thinners or nail polish remover as these may cause discolouration over a period of time.

Always test in an inconspicuous area first.

If care instructions don't deliver the expected results, cease cleaning method immediately and contact Baresque for assistance.

Warranty

5-year warranty. Visit [baresque.com.au/warranty](https://www.baresque.com.au/warranty) for complete details.

GALERIE

Wallcoverings » Commercial Wallcoverings

Colour & Finish Options



G222-82 APPLE TREE



G222-55 BARONESS



G222-53 BIRCH
FOREST



222-99 BIRNAUM



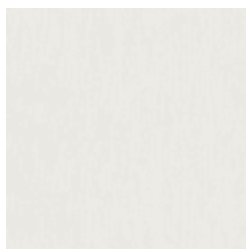
G222-58 BRONZE AGE



G222-59 BYZANTINE



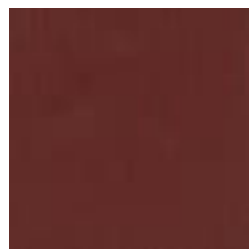
G222-78 CASSONE



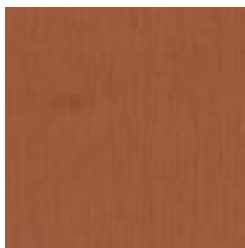
G222-10 EARNEST



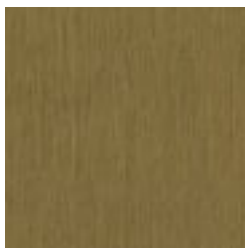
G222-37 EXPETATION



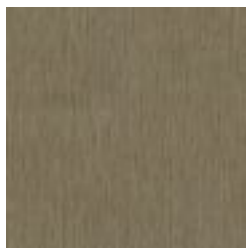
G222-69 FRITZA



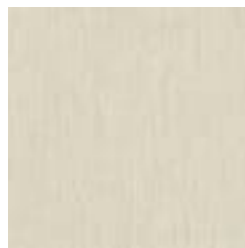
G222-65 GOLDFISH



G222-57 GOLD LEAF



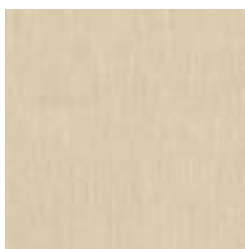
G222-56 HIMALAYA



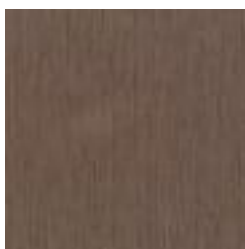
G222-21 HOPE



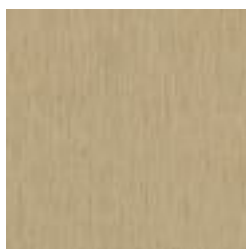
G222-71 MARIE



G222-35 NAPLES



G222-68 NOUVEAU



G222-45 OCHRE



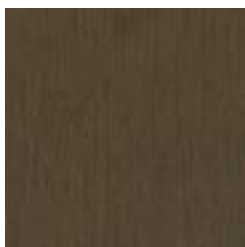
G222-91 POPLAR



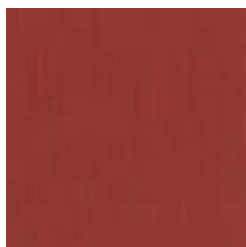
G222-09 PORTRAIT



G222-75 PORTRAIT OF
A LADY



G222-60 RAW UMBER



G222-70 RED HILDA



G222-42 ROSEWOOD



G222-43 SPEIA

GALERIE

Wallcoverings » Commercial Wallcoverings



G222-38 SIENNA



G222-98 SMOKE



G222-40 STILL POND



G222-88 TREE OF LIFE



G222-80 WOMAN IN
GOLD