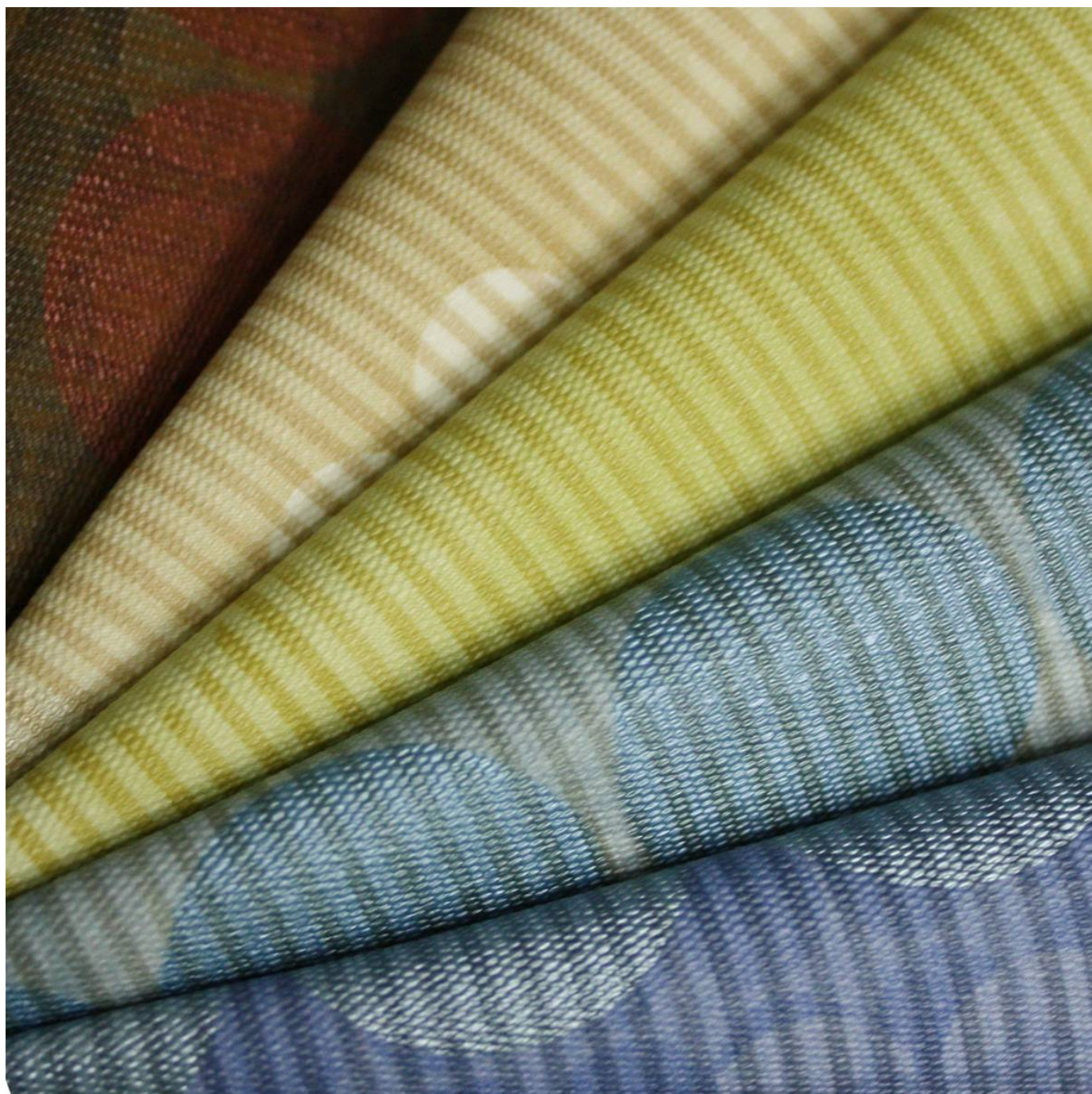


FIZZ W2-FZ-XX

Wallcoverings » Commercial Wallcoverings



Brand: **Genon**

Applications: **Walls**

1300 306 399

info@baresque.com.au

baresque.com.au

1 of 4

FIZZ W2-FZ-XX

Wallcoverings » Commercial Wallcoverings

Fizz is a 137cm wide commercial wallcovering with a pearl stripe pattern that's available in 18 colourways. It's versatile, durable and easy to clean.

✓ Bleach Cleanable

Composition Vinyl face on a non-woven backing 20oz (452 g/m²)

Environmental Info Formaldehyde free

Heavy metals free

Perfluorooctanoic acid free

No solvent inks

Low VOC emissions. Any VOCs dissipate quickly (faster than paint) through normal ventilation and have no recognized adverse impact on indoor air quality.

Durability means products do not need to be replaced regularly due to wear and tear and being cleanable, vinyl products are ideal for helping keep commercial environments clean of bacteria.

Baresque will only deal with vinyl manufacturers that comply with applicable state and federal regulations, provide a factory that is safe and clean for its employees to work in, recycle scrap and inks during the manufacturing process to minimize waste related to production.

Pattern Repeat Size N/A

Roll Size 137cm wide x 27.4m - Available by the lineal metre

Fire Rating Tested in accordance with AS ISO 9705 2003 for the purpose of determining the Group Number classification as required by the Building Code of Australia for the control of fire spread on interior wall and ceiling linings.

The result achieved was:

Classification - Group 2

Specific Extinction - Less than 250m²/kg

Lead Time

- 2-weeks (approx.) from Wednesday, subject to stock availability.
- Additional 1-week for Western Australia.
- Express delivery is available subject to a surcharge. Contact Baresque for details and pricing.

FIZZ W2-FZ-XX

Wallcoverings » Commercial Wallcoverings

Suggested Installation

Reverse hang / overlap and double cut.

Baresque recommends and supply Roman brand adhesives and primers.

Care Instructions

Use cloth with any of the following in preferred order of use:

1: Clear warm water

2: Mild solution of liquid detergent and warm water

3: Isopropyl Alcohol (a.k.a. rubbing alcohol)

Remove any detergent with a clean, damp cloth. Gently pat dry.

For more difficult stains, dampen a soft white cloth with a solution of household bleach (10% bleach / 90% water). Rub gently.

Rinse with a water dampened cloth to remove bleach concentration.

Do not use solvent based or concentrated abrasive cleaning agents, lacquer thinners or nail polish remover as these may cause discolouration over a period of time.

Always test in an inconspicuous area first.

If care instructions don't deliver the expected results, cease cleaning method immediately and contact Baresque for assistance.

Warranty

5-year warranty. Visit [baresque.com.au/warranty](https://www.baresque.com.au/warranty) for complete details.

FIZZ W2-FZ-XX

Wallcoverings » Commercial Wallcoverings

Colour & Finish Options



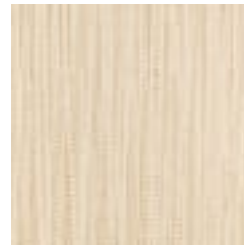
W2-FZ-01 CREAM
SODA



W2-FZ-02 BUBBLY



W2-FZ-03 PALE ALE



W2-FZ-04
EFFERVESCENT



W2-FZ-05 LAGER



W2-FZ-06 FUZZY
NAVEL



W2-FZ-07 TOASTED
ALMOND



W2-FZ-10 GIN TONIC



W2-FZ-11 SELTZER



W2-FZ-12
CHAMPAGNE



W2-FZ-15 MUDSLIDE



W2-FZ-18 BLACK OUT



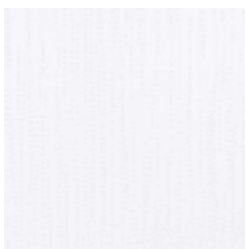
W2-FZ-19 MINT JULEP



W2-FZ-20 WINE
SPRITZER



W2-FZ-21 SKY
MARTINI



W2-FZ-22 WHITE
SANGRIA



W2-FZ-23 SPARKLING
TEA



W2-FZ-24 PINK LADY