

ENCHANTED

Wallcoverings » Commercial Wallcoverings



Brand: **Bolta**

Applications: **Walls**

1300 306 399

info@baresque.com.au

baresque.com.au

1 of 5

ENCHANTED

Wallcoverings » Commercial Wallcoverings



enchanted-promo-1.jpg

ENCHANTED

Wallcoverings » Commercial Wallcoverings

Enchanted is a 137cm wide commercial wallcovering that's available in 18 textured colourways. Vinyl is versatile, durable and cost effective.

✓ Bleach Cleanable

Composition	Vinyl face on a fabric backing 20oz (452 g/m ²)
-------------	-------------------------------------------------------------

Environmental Info

Formaldehyde free

Heavy metals free

Perfluorooctanoic acid free

No solvent inks

Low VOC emissions. Any VOCs dissipate quickly (faster than paint) through normal ventilation and have no recognized adverse impact on indoor air quality.

Durability means products do not need to be replaced regularly due to wear and tear and being cleanable, vinyl products are ideal for helping keep commercial environments clean of bacteria.

Baresque will only deal with vinyl manufacturers that comply with applicable state and federal regulations, provide a factory that is safe and clean for its employees to work in, recycle scrap and inks during the manufacturing process to minimize waste related to production.

Pattern Repeat Size	53cm V
---------------------	--------

Roll Size	137cm wide x 27.4m - Available by the lineal metre
-----------	----------------------------------------------------

Fire Rating

Tested in accordance with AS ISO 9705 2003 for the purpose of determining the Group Number classification as required by the Building Code of Australia for the control of fire spread on interior wall and ceiling linings.

The result achieved was:

Classification - Group 2

Specific Extinction - Less than 250m²/kg

Lead Time

- 2-weeks (approx.) from Wednesday, subject to stock availability.
- Additional 1-week for Western Australia.
- Express delivery is available subject to a surcharge. Contact Baresque for details and pricing.

ENCHANTED

Wallcoverings » Commercial Wallcoverings

Suggested Installation

Reverse hang / overlap and double cut.

Baresque recommends and supply Roman brand adhesives and primers.

Care Instructions

Use cloth with any of the following in preferred order of use:

1: Clear warm water

2: Mild solution of liquid detergent and warm water

3: Isopropyl Alcohol (a.k.a. rubbing alcohol)

Remove any detergent with a clean, damp cloth. Gently pat dry.

For more difficult stains, dampen a soft white cloth with a solution of household bleach (10% bleach / 90% water). Rub gently.

Rinse with a water dampened cloth to remove bleach concentration.

Do not use solvent based or concentrated abrasive cleaning agents, lacquer thinners or nail polish remover as these may cause discolouration over a period of time.

Always test in an inconspicuous area first.

If care instructions don't deliver the expected results, cease cleaning method immediately and contact Baresque for assistance.

Warranty

5-year warranty. Visit baresque.com.au/warranty for complete details.

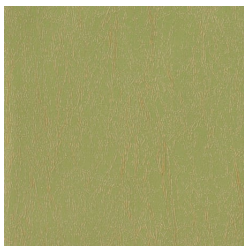
ENCHANTED

Wallcoverings » Commercial Wallcoverings

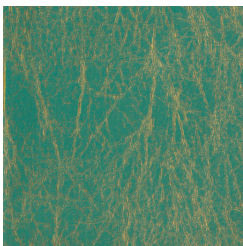
Colour & Finish Options

COLOURWAY CARD

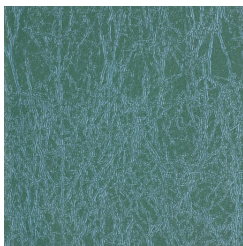
COLOURWAY CARD



BB-EN-21 OLIVE
BRANCH



BB-EN-22 ENVY



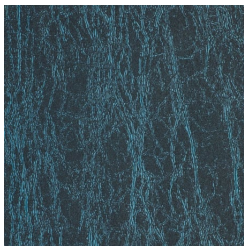
BB-EN-23
RAINFOREST



BB-EN-24 NEUTRAL
FLICKER



BB-EN-25 OYSTER



BB-EN-26 RUSHING
RIVER



BB-EN-27
CRYSTALIZED



BB-EN-28 ICY GREIGE



BB-EN-29 GRANITE



BB-EN-30 EGGSHELL



BB-EN-31 SANDBAR



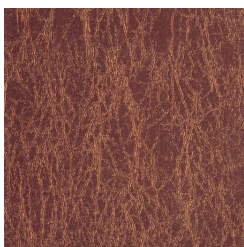
BB-EN-32 MINK



BB-EN-33 WARM
BISQUE



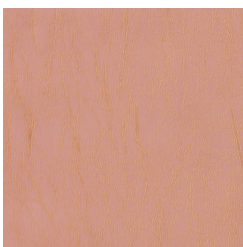
BB-EN-34
BUTTERNUT



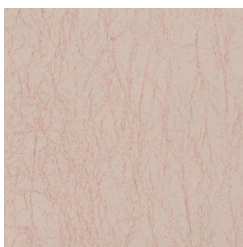
BB-EN-35 BURGUNDY



BB-EN-36 LAVENDER
GLINT



BB-EN-37 SORBET



BB-EN-38 PINK SHALE