

EMBARCADERO

Wallcoverings » Commercial Wallcoverings



Brand: **Versa**

Applications: **Walls**

1300 306 399

info@baresque.com.au

baresque.com.au

1 of 5

EMBARCADERO

Wallcoverings » Commercial Wallcoverings

Embarcadero is a 137cm wide wallcovering with metallic accents and darker cross threads in a three dimensional design available in 21 colours.

✓ **Bleach Cleanable**

Description	Drawing inspiration from San Francisco's Embarcadero waterfront, metallic accents are woven with darker cross threads in this three dimensional design.
-------------	---

Composition	Vinyl face on a fabric backing 20oz (452 g/m ²)
-------------	---

Environmental Info	<p>Formaldehyde free</p> <p>Heavy metals free</p> <p>Perfluorooctanoic acid free</p> <p>No solvent inks</p> <p>Low VOC emissions. Any VOCs dissipate quickly (faster than paint) through normal ventilation and have no recognized adverse impact on indoor air quality.</p> <p>Durability means products do not need to be replaced regularly due to wear and tear and being cleanable, vinyl products are ideal for helping keep commercial environments clean of bacteria.</p> <p>Baresque will only deal with vinyl manufacturers that comply with applicable state and federal regulations, provide a factory that is safe and clean for its employees to work in, recycle scrap and inks during the manufacturing process to minimize waste related to production.</p>
--------------------	--

Pattern Repeat Size	N/A
---------------------	-----

Roll Size	137cm wide x 27.4m - Available by the lineal metre
-----------	--

Fire Rating	<p>Tested in accordance with AS ISO 9705 2003 for the purpose of determining the Group Number classification as required by the Building Code of Australia for the control of fire spread on interior wall and ceiling linings.</p> <p>The result achieved was: Classification - Group 2 Specific Extinction - Less than 250m²/kg</p>
-------------	--

Lead Time	<ul style="list-style-type: none">• 2-weeks (approx.) from Wednesday, subject to stock availability.• Additional 1-week for Western Australia.• Express delivery is available subject to a surcharge. Contact Baresque for details and pricing.
-----------	---

EMBARCADERO

Wallcoverings » Commercial Wallcoverings

Suggested Installation

Reverse hang / overlap and double cut.

Baresque recommends and supply Roman brand adhesives and primers.

Care Instructions

Always use a clean, white, soft cloth.

Use cloth with any of the following in preferred order of use:

1: Clear warm water

2: Mild solution of liquid detergent and warm water

3: Isopropyl Alcohol (a.k.a. rubbing alcohol)

Remove any detergent with a clean, damp cloth. Gently pat dry.

For more difficult stains, dampen a soft white cloth with a solution of household bleach (10% bleach / 90% water). Rub gently.

Rinse with a water dampened cloth to remove bleach concentration.

DO NOT USE solvent based or concentrated abrasive cleaning agents, lacquer thinners, nail polish remover as these may cause discolouration over a period of time.

Always test in an inconspicuous area first. If care instructions don't deliver the expected results, cease cleaning method immediately and contact Baresque for assistance.

Warranty

5-year warranty. Visit baresque.com.au/warranty for complete details.

EMBARCADERO

Wallcoverings » Commercial Wallcoverings

Colour & Finish Options

COLOURWAY CARD

COLOURWAY CARD



A156-101 SPRING
WOOD



A156-139 SANDSTONE



A156-144 ALABASTER



A156-152
PROMENADE



A156-166
CHAMPAGNE



A156-274 GRANNY
SMITH APPLE



A156-310 MIDNIGHT
EXPRESS



A156-372 HORIZON



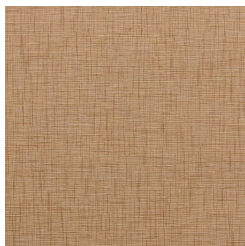
A156-388 NIGHT
RIDER



A156-396 SHERPA
BLUE



A156-482 PIZAZZ



A156-503 SAND DRIFT



A156-587 RAFFIA



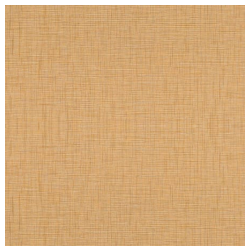
A156-592 DARK
SLATE



A156-635 BAKERS
CHOCOLATE



A156-660 TANGO



A156-791 SUNGLOW



A156-833 BUD



A156-861 STAR DUST



A156-884 PUMICE



A156-895 MOUNTAIN

EMBARCADERO

Wallcoverings » Commercial Wallcoverings

MIST