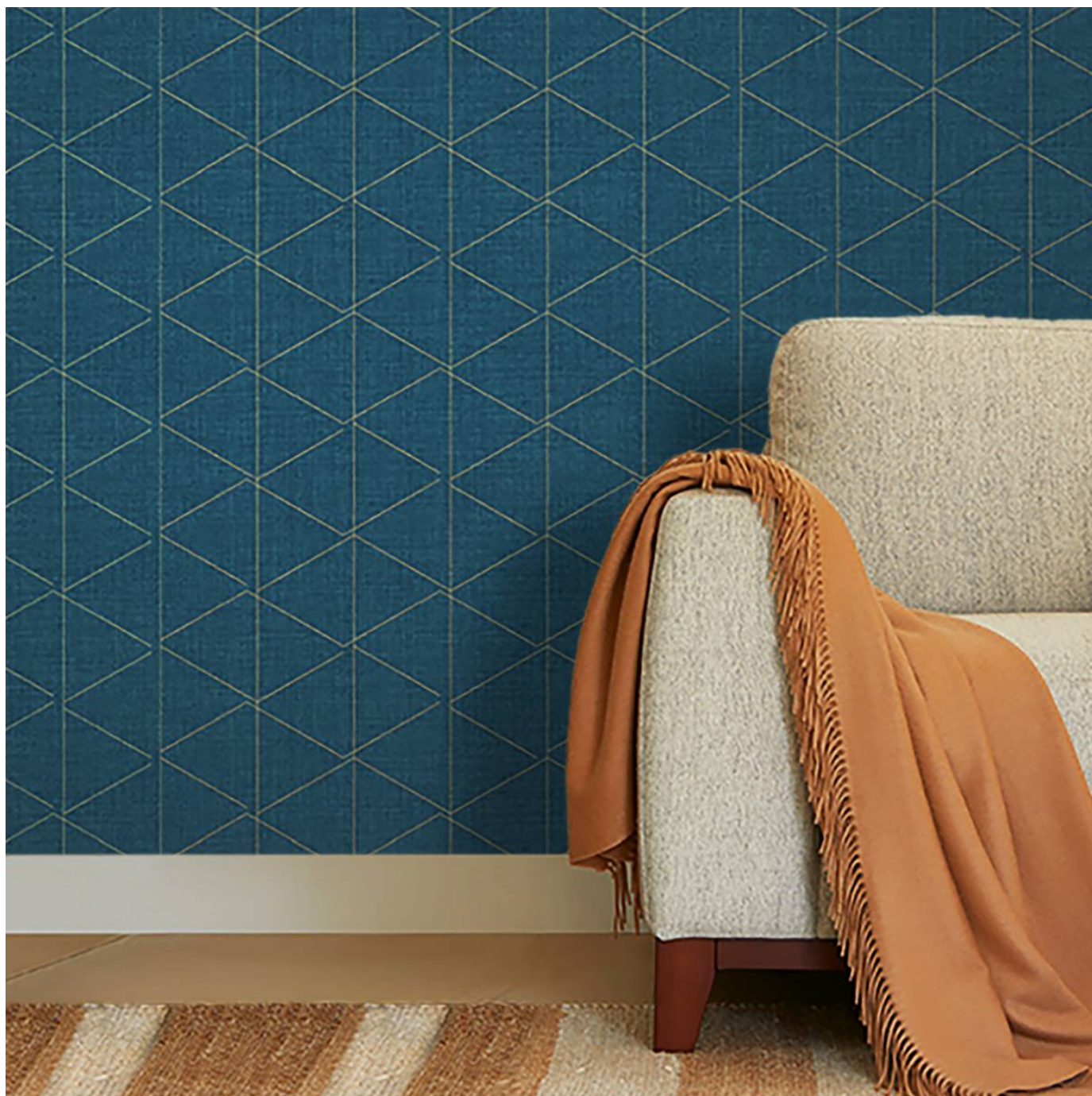


DESERT PEAK

Wallcoverings » Commercial Wallcoverings



Brand: **Genon**

Applications: **Walls**

1300 306 399

info@baresque.com.au

baresque.com.au

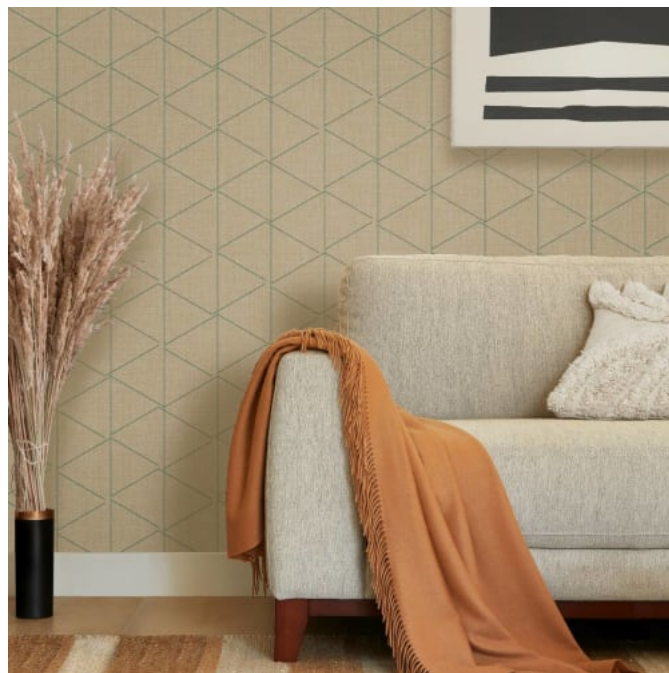
1 of 5

DESERT PEAK

Wallcoverings » Commercial Wallcoverings



desert-peak_promo-2.jpg



desert-peak_promo-3.jpg

DESERT PEAK

Wallcoverings » Commercial Wallcoverings

Desert Peak is a 132cm wide wallcovering with a graphic pattern and distinctive texture that's available in 7 colourways. Durable and easy to clean.

✓ **Bleach Cleanable**

Description	The majestic mountaintops rise above the horizon line, creating structure and silhouettes, sparking the inspiration behind Desert Peak. This graphic pattern offers a modern mood to these ancient formations. Desert Peak's inspiration and distinctive texture delivers the look of iconic fabric to your space alongside it coordinate design Desert Denim. Features + Benefits * Bleach cleanable * 7 Colourways * Cooridante design options * Inherently anti-microbial
Composition	Vinyl face on a woven backing Equivalent to 20oz (452 g/m²)
Environmental Info	<p>Formaldehyde free</p> <p>Heavy metals free</p> <p>Perfluorooctanoic acid free</p> <p>No solvent inks</p> <p>Low VOC emissions. Any VOCs dissipate quickly (faster than paint) through normal ventilation and have no recognized adverse impact on indoor air quality.</p> <p>Durability means products do not need to be replaced regularly due to wear and tear and being cleanable, vinyl products are ideal for helping keep commercial environments clean of bacteria.</p> <p>Baresque will only deal with vinyl manufacturers that comply with applicable state and federal regulations, provide a factory that is safe and clean for its employees to work in, recycle scrap and inks during the manufacturing process to minimize waste related to production.</p>
Pattern Repeat Size	61cm V
Roll Size	137cm wide x 27.4m - Available by the lineal metre
Fire Rating	<p>Tested in accordance with AS ISO 9705 2003 for the purpose of determining the Group Number classification as required by the Building Code of Australia for the control of fire spread on interior wall and ceiling linings.</p> <p>The result achieved was: Classification - Group 2 Specific Extinction - Less than 250m²/kg</p>

DESERT PEAK

Wallcoverings » Commercial Wallcoverings

Lead Time	<ul style="list-style-type: none">• 2-weeks (approx.) from Wednesday, subject to stock availability.• Additional 1-week for Western Australia.• Express delivery is available subject to a surcharge. Contact Baresque for details and pricing.
Suggested Installation	<p>Non reverse hang/overlap double cut.</p> <p>Baresque recommends and supplies Roman brand adhesives and primers.</p>
Care Instructions	<p>Use cloth with any of the following in preferred order of use:</p> <ol style="list-style-type: none">1: Clear warm water2: Mild solution of liquid detergent and warm water3: Isopropyl Alcohol (a.k.a. rubbing alcohol) <p>Remove any detergent with a clean, damp cloth. Gently pat dry.</p> <p>For more difficult stains, dampen a soft white cloth with a solution of household bleach (10% bleach / 90% water). Rub gently.</p> <p>Rinse with a water dampened cloth to remove bleach concentration.</p> <p>Do not use solvent based or concentrated abrasive cleaning agents, lacquer thinners or nail polish remover as these may cause discolouration over a period of time.</p> <p>Always test in an inconspicuous area first.</p> <p>If care instructions don't deliver the expected results, cease cleaning method immediately and contact Baresque for assistance.</p>
Warranty	<p>5-year warranty. Visit baresque.com.au/warranty for complete details.</p>

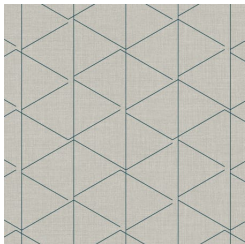
DESERT PEAK

Wallcoverings » Commercial Wallcoverings

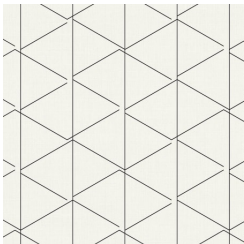
Colour & Finish Options

COLOURWAY CARD

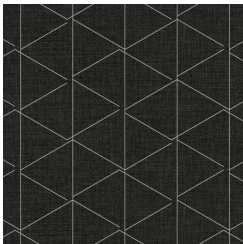
COLOURWAY CARD



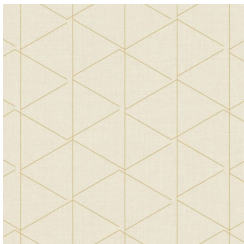
W2-DP-01 DESERT GREY



W2-DP-02 WHITE SANDS



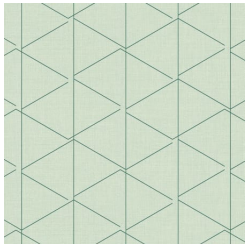
W2-DP-03 BLACK ROCK



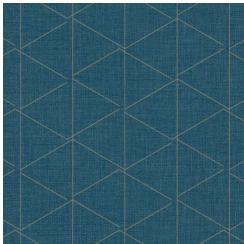
W2-DP-04 FOSSIL



W2-DP-05 PRAIRIE SUEDE



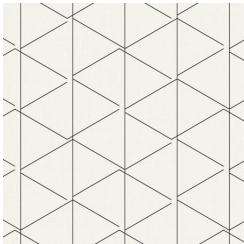
W2-DP-06 SAGEBRUSH



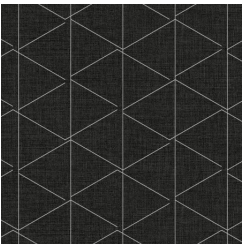
W2-DP-07 INDIGO



W2-DP-01 DESERT GREY



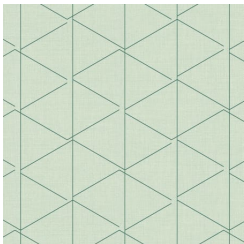
W2-DP-02 WHITE SANDS



W2-DP-03 BLACK ROCK



W2-DP-05 PRAIRIE SUEDE



W2-DP-06 SAGEBRUSH



W2-DP-07 INDIGO