

DESERT DENIM

Wallcoverings » Commercial Wallcoverings



Brand: **Genon**

Applications: **Walls**

DESERT DENIM

Wallcoverings » Commercial Wallcoverings



desert-denim-promo-2.jpg

DESERT DENIM

Wallcoverings » Commercial Wallcoverings

Desert Denim is a 137cm wide commercial wallcovering with a textile look inspired by workhorse cloth that's available in 15 colours.

✓ **Bleach Cleanable**

Description Ease into adventure with Desert Denim. The open road, warm sunshine, vast horizons, and your favorite jeans...set the tone for Desert Denim and this curated palette. Workhorse cloth inspiration and the ease of this iconic fabric appeal deliver a textile look to your walls. Desert Denim's is available in a curated colour palette of 15 colourways. Features + Benefits * Bleach cleanable * 15 Colourways * Coordinate design options * Inherently anti-microbial * Recycled content * Low VOC

Composition Vinyl face on a woven backing Equivalent to 20oz (452 g/m²)

Environmental Info Formaldehyde free
Heavy metals free
Perfluorooctanoic acid free
No solvent inks
Low VOC emissions. Any VOCs dissipate quickly (faster than paint) through normal ventilation and have no recognized adverse impact on indoor air quality.
Durability means products do not need to be replaced regularly due to wear and tear and being cleanable, vinyl products are ideal for helping keep commercial environments clean of bacteria.
Baresque will only deal with vinyl manufacturers that comply with applicable state and federal regulations, provide a factory that is safe and clean for its employees to work in, recycle scrap and inks during the manufacturing process to minimize waste related to production.

Pattern Repeat Size N/A

Roll Size 137cm x 27.4m - Available by the lineal metre

Fire Rating Tested in accordance with AS ISO 9705 2003 for the purpose of determining the Group Number classification as required by the Building Code of Australia for the control of fire spread on interior wall and ceiling linings.
The result achieved was:
Classification - Group 2
Specific Extinction - Less than 250m²/kg

DESERT DENIM

Wallcoverings » Commercial Wallcoverings

Lead Time

- 2-weeks (approx.) from Wednesday, subject to stock availability.
 - Additional 1-week for Western Australia.
 - Express delivery is available subject to a surcharge. Contact Baresque for details and pricing.
-

Suggested Installation

Reverse hang / overlap and double cut.
Baresque recommends and supply Roman brand adhesives and primers.

Care Instructions

Use cloth with any of the following in preferred order of use:

- 1: Clear warm water
- 2: Mild solution of liquid detergent and warm water
- 3: Isopropyl Alcohol (a.k.a. rubbing alcohol)

Remove any detergent with a clean, damp cloth. Gently pat dry.

For more difficult stains, dampen a soft white cloth with a solution of household bleach (10% bleach / 90% water). Rub gently.

Rinse with a water dampened cloth to remove bleach concentration.

Do not use solvent based or concentrated abrasive cleaning agents, lacquer thinners or nail polish remover as these may cause discolouration over a period of time.

Always test in an inconspicuous area first.

If care instructions don't deliver the expected results, cease cleaning method immediately and contact Baresque for assistance.

Warranty

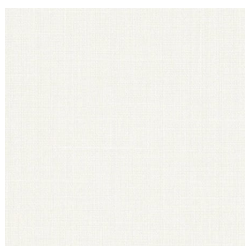
5-year warranty. Visit [baresque.com.au/warranty](https://www.baresque.com.au/warranty) for complete details.

DESERT DENIM

Wallcoverings » Commercial Wallcoverings

Colour & Finish Options

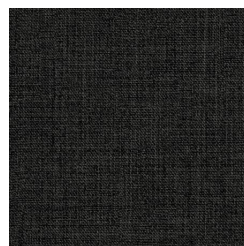
COLOURWAY CARD



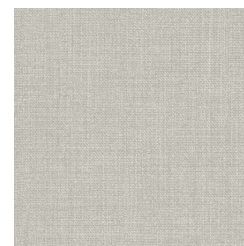
W2-DD-01 WHITE SANDS



W2-DD-02 DOMINO



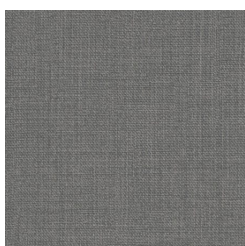
W2-DD-03 BLACK ROCK



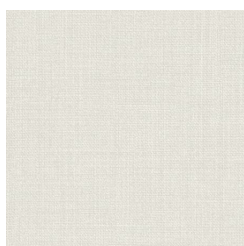
W2-DD-04 DESERT GREY



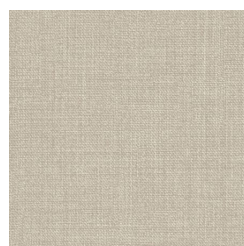
W2-DD-05 EAGLE TAIL



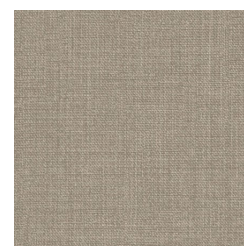
W2-DD-06 DARK SHADE



W2-DD-07 RISING FOG



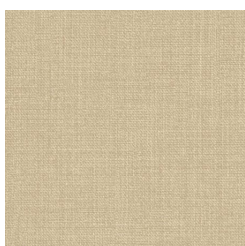
W2-DD-08 WORN PATH



W2-DD-09 VINTAGE TAUPE



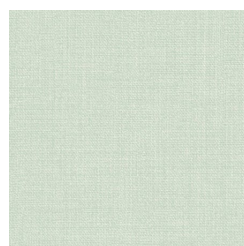
W2-DD-10 FOSSIL



W2-DD-11 CANYON TAN



W2-DD-12 PRAIRIE SUEDE



W2-DD-13 SAGEBRUSH



W2-DD-14 BAJA BLUEJEAN



W2-DD-15 INDIGO