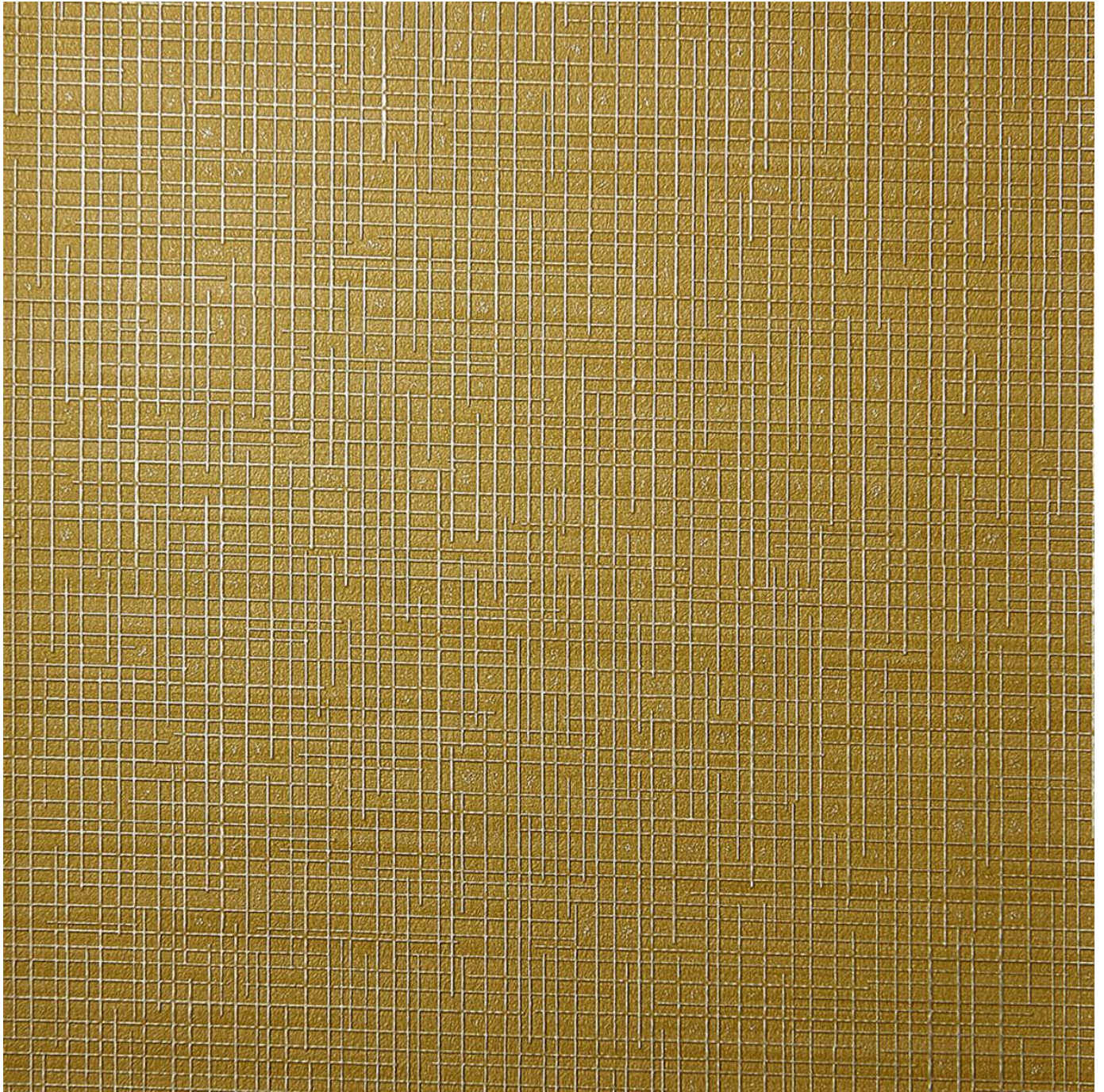


# CORDA

Wallcoverings » Commercial Wallcoverings

---



Brand: **Versa**

Applications: **Walls**

1300 306 399

[info@baresque.com.au](mailto:info@baresque.com.au)

[baresque.com.au](http://baresque.com.au)

1 of 4



# CORDA

Wallcoverings » Commercial Wallcoverings

Corda is a edgy yet rustic commercial wallcovering with a modern twist on a woven effect that's available in 16 colours. Durable and easy to clean.

## ✓ Bleach Cleanable

Description	Edgy yet rustic, Corda is a proprietary new embossing merging hot industrial with hand-crafted artistry. Streamlined multi-directional bands interweave across the surface, resulting in a modern twist on a woven effect. Corda's palette is fresh and forward thinking: clean and upgraded in white and usable neutrals; with punches of colours for accents.
Composition	Roll Size - 137cm x 27.4m - Available by the lineal metre
Environmental Info	<p>Formaldehyde free</p> <p>Heavy metals free</p> <p>Perfluorooctanoic acid free</p> <p>No solvent inks</p> <p>Low VOC emissions. Any VOCs dissipate quickly (faster than paint) through normal ventilation and have no recognized adverse impact on indoor air quality.</p> <p>Durability means products do not need to be replaced regularly due to wear and tear and being cleanable, vinyl products are ideal for helping keep commercial environments clean of bacteria.</p> <p>Baresque will only deal with vinyl manufacturers that comply with applicable state and federal regulations, provide a factory that is safe and clean for its employees to work in, recycle scrap and inks during the manufacturing process to minimize waste related to production.</p>
Pattern Repeat Size	N/A
Roll Size	137cm wide x 27.4m - Available by the lineal metre
Fire Rating	<p>Tested in accordance with AS ISO 9705 2003 for the purpose of determining the Group Number classification as required by the Building Code of Australia for the control of fire spread on interior wall and ceiling linings.</p> <p>The result achieved was: Classification - Group 2 Specific Extinction - Less than 250m<sup>2</sup>/kg</p>

Lead Time	<ul style="list-style-type: none"><li>• 2-weeks (approx.) from Wednesday, subject to stock availability.</li><li>• Additional 1-week for Western Australia.</li><li>• Express delivery is available subject to a surcharge. Contact Baresque for details and pricing.</li></ul>
-----------	---

---

Suggested Installation	<p>Reverse hang / overlap and double cut.</p> <p>Baresque recommends and supply Roman brand adhesives and primers.</p>
------------------------	--

---

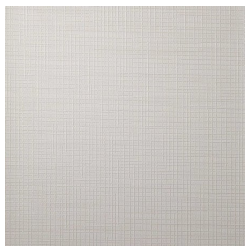
Care Instructions	<p>Always use a clean, white, soft cloth.</p> <p>Use cloth with any of the following in preferred order of use:</p> <ol style="list-style-type: none"><li>1: Clear warm water</li><li>2: Mild solution of liquid detergent and warm water</li><li>3: Isopropyl Alcohol (a.k.a. rubbing alcohol)</li></ol> <p>Remove any detergent with a clean, damp cloth. Gently pat dry.</p> <p>For more difficult stains, dampen a soft white cloth with a solution of household bleach (10% bleach / 90% water). Rub gently.</p> <p>Rinse with a water dampened cloth to remove bleach concentration.</p> <p>DO NOT USE solvent based or concentrated abrasive cleaning agents, lacquer thinners, nail polish remover as these may cause discolouration over a period of time.</p> <p>Always test in an inconspicuous area first. If care instructions don't deliver the expected results, cease cleaning method immediately and contact Baresque for assistance.</p>
-------------------	--

---

Warranty	5-year warranty. Visit <a href="https://baresque.com.au/warranty">baresque.com.au/warranty</a> for complete details.
----------	--

---

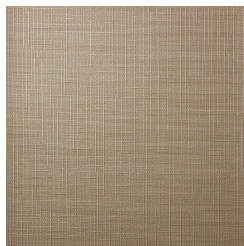
## Colour & Finish Options



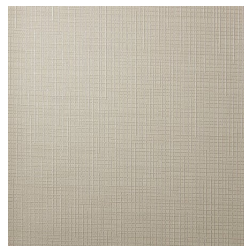
A196-001 WHITE  
LANTERN



A196-012 Alchemy



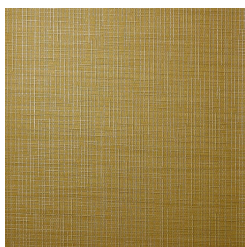
A196-026 TEA HOUSE



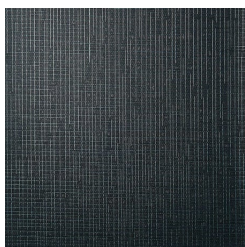
A196-032 ALHAMBRA



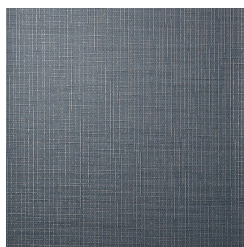
A196-206 EGYPTIAN  
GLASS



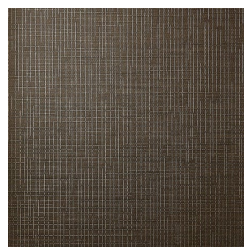
A196-222 BAMBOO



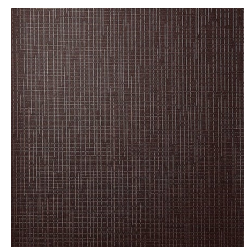
A196-311 NAPLES



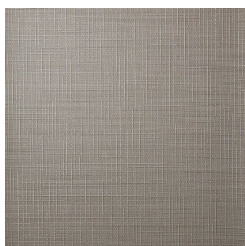
A196-370 IMPERIAL  
KNIGHT



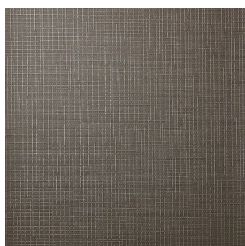
A196-382 CACAO



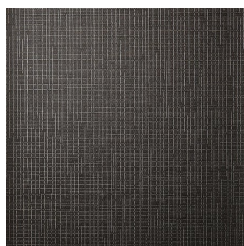
A196-418 BERRY  
GLACE



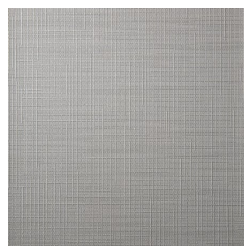
A196-501 SPIRE



A196-506 CRIOLLO



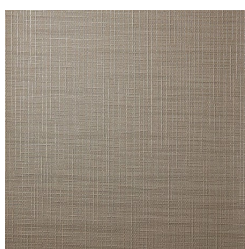
A196-509 KASHIRA



A196-540 SILVER  
MOON



A196-588 VICTORIA  
FALLS



A196-592 LABYRINTH