

CONNEXION

Wallcoverings » Commercial Wallcoverings



Brand: **Versa**

Applications: **Walls**

1300 306 399

info@baresque.com.au

baresque.com.au

1 of 5

CONNEXION

Wallcoverings » Commercial Wallcoverings



connexion_promo-2.jpg

CONNEXION

Wallcoverings » Commercial Wallcoverings

Connexion is a 137cm wide commercial wallcovering with a intricate pattern that's available in 15 colours. Durable, easy to clean and cost effective.

✓ Bleach Cleanable

Description	Fan shaped wedges of pattern intersect with horizontal bands, suggesting intricate webs or the sweep of a spotlight.
-------------	--

Composition	Vinyl face on a non-woven backing 20oz (452 g/m ²)
-------------	--

Environmental Info	<p>Formaldehyde free</p> <p>Heavy metals free</p> <p>Perfluorooctanoic acid free</p> <p>No solvent inks</p> <p>Low VOC emissions. Any VOCs dissipate quickly (faster than paint) through normal ventilation and have no recognized adverse impact on indoor air quality.</p> <p>Durability means products do not need to be replaced regularly due to wear and tear and being cleanable, vinyl products are ideal for helping keep commercial environments clean of bacteria.</p> <p>Baresque will only deal with vinyl manufacturers that comply with applicable state and federal regulations, provide a factory that is safe and clean for its employees to work in, recycle scrap and inks during the manufacturing process to minimize waste related to production.</p>
--------------------	--

Pattern Repeat Size	N/A
---------------------	-----

Roll Size	132/137cm x 27.4m - Available by the lineal metre.
-----------	--

Fire Rating	<p>Tested in accordance with AS ISO 9705 2003 for the purpose of determining the Group Number classification as required by the Building Code of Australia for the control of fire spread on interior wall and ceiling linings.</p> <p>The result achieved was: Classification - Group 2 Specific Extinction - Less than 250m²/kg</p>
-------------	--

Lead Time	<ul style="list-style-type: none">• 2-weeks (approx.) from Wednesday, subject to stock availability.• Additional 1-week for Western Australia.• Express delivery is available subject to a surcharge. Contact Baresque for details and pricing.
-----------	---

CONNEXION

Wallcoverings » Commercial Wallcoverings

Suggested Installation

Reverse hang / overlap and double cut.

Baresque recommends and supply Roman brand adhesives and primers.

Care Instructions

Always use a clean, white, soft cloth.

Use cloth with any of the following in preferred order of use:

1: Clear warm water

2: Mild solution of liquid detergent and warm water

3: Isopropyl Alcohol (a.k.a. rubbing alcohol)

Remove any detergent with a clean, damp cloth. Gently pat dry.

For more difficult stains, dampen a soft white cloth with a solution of household bleach (10% bleach / 90% water). Rub gently.

Rinse with a water dampened cloth to remove bleach concentration.

DO NOT USE solvent based or concentrated abrasive cleaning agents, lacquer thinners, nail polish remover as these may cause discolouration over a period of time.

Always test in an inconspicuous area first. If care instructions don't deliver the expected results, cease cleaning method immediately and contact Baresque for assistance.

Warranty

5-year warranty. Visit baresque.com.au/warranty for complete details.

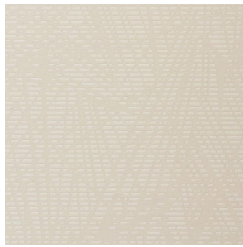
CONNEXION

Wallcoverings » Commercial Wallcoverings

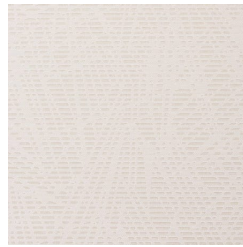
Colour & Finish Options



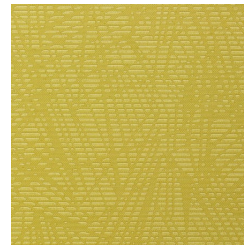
A164-110 SAND
CASTLE



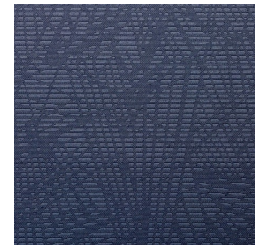
A164-183 ANTLER



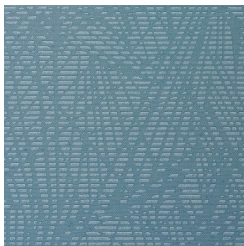
A164-196 FRESCO



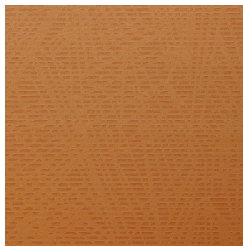
A164-232 PEA POD



A164-308 MIDNIGHT



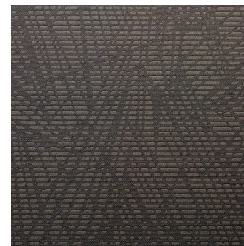
A164-364 SUMMER
HOUSE



A164-419 MANDARIN



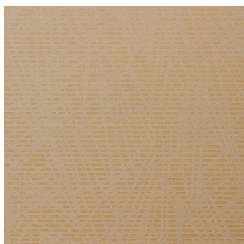
A164-542 INDUSTRY



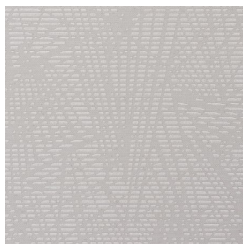
A164-557 CASINO



A164-755 SUNSHINE



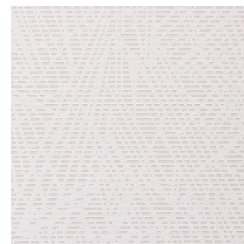
A164-776 MESA



A164-816 HARBOR
SEAL



A164-824 CASHMERE



A164-833 PEBBLE



A164-897 QUARRY