

BRISTOL

Wallcoverings » Commercial Wallcoverings



Brand: **Versa**

Applications: **Walls**

BRISTOL

Wallcoverings » Commercial Wallcoverings

Bristol is a 137cm wide commercial wallcovering with a luscious fusion of texture and colour that's available in 28 colours. Durable and easy to clean

✓ Bleach Cleanable

Description	Luscious fusion of texture and colour
-------------	---------------------------------------

Composition	Vinyl face on a fabric backing 20oz (452 g/m ²)
-------------	---

Environmental Info	<p>Formaldehyde free</p> <p>Heavy metals free</p> <p>Perfluorooctanoic acid free</p> <p>No solvent inks</p> <p>Low VOC emissions. Any VOCs dissipate quickly (faster than paint) through normal ventilation and have no recognized adverse impact on indoor air quality.</p> <p>Durability means products do not need to be replaced regularly due to wear and tear and being cleanable, vinyl products are ideal for helping keep commercial environments clean of bacteria.</p> <p>Baresque will only deal with vinyl manufacturers that comply with applicable state and federal regulations, provide a factory that is safe and clean for its employees to work in, recycle scrap and inks during the manufacturing process to minimize waste related to production.</p>
--------------------	--

Pattern Repeat Size	N/A
---------------------	-----

Roll Size	137cm wide x 27.4m - Available by the lineal metre
-----------	--

Fire Rating	<p>Tested in accordance with AS ISO 9705 2003 for the purpose of determining the Group Number classification as required by the Building Code of Australia for the control of fire spread on interior wall and ceiling linings.</p> <p>The result achieved was: Classification - Group 2 Specific Extinction - Less than 250m²/kg</p>
-------------	--

Lead Time	<ul style="list-style-type: none">• 2-weeks (approx.) from Wednesday, subject to stock availability.• Additional 1-week for Western Australia.• Express delivery is available subject to a surcharge. Contact Baresque for details and pricing.
-----------	---

BRISTOL

Wallcoverings » Commercial Wallcoverings

Suggested Installation

Reverse hang / overlap and double cut.

Baresque recommends and supply Roman brand adhesives and primers.

Care Instructions

Always use a clean, white, soft cloth.

Use cloth with any of the following in preferred order of use:

1: Clear warm water

2: Mild solution of liquid detergent and warm water

3: Isopropyl Alcohol (a.k.a. rubbing alcohol)

Remove any detergent with a clean, damp cloth. Gently pat dry.

For more difficult stains, dampen a soft white cloth with a solution of household bleach (10% bleach / 90% water). Rub gently.

Rinse with a water dampened cloth to remove bleach concentration.

DO NOT USE solvent based or concentrated abrasive cleaning agents, lacquer thinners, nail polish remover as these may cause discolouration over a period of time.

Always test in an inconspicuous area first. If care instructions don't deliver the expected results, cease cleaning method immediately and contact Baresque for assistance.

Warranty

5-year warranty. Visit baresque.com.au/warranty for complete details.

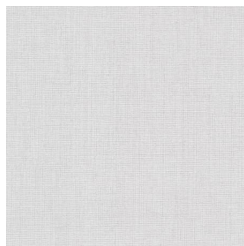
Colour & Finish Options

COLOURWAY CARD

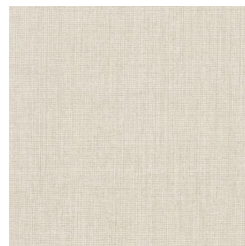
COLOURWAY CARD



ASL-135003 SHIMMER



ASL-135015 DOVE



ASL-135126 SONORAN



ASL-135143 ALPACA



ASL-135188 OPAL



ASL-135318
CARIBBEAN



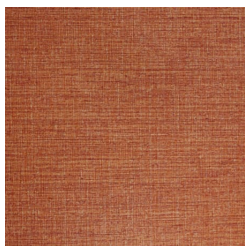
ASL-135333
MIDNIGHT



ASL-135342 SEASIDE



ASL-135362 FRENCH
BLUE



ASL-135455 CHILI
PEPPER



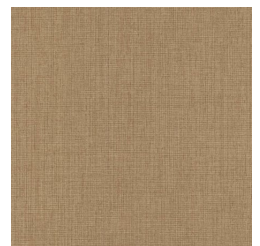
ASL-135461 TANGELO



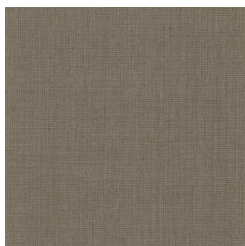
ASL-135503 TAWNY



ASL-135528
SILVERADO



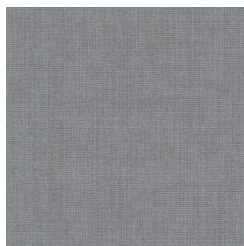
ASL-135531
SANDCASTLE



ASL-135547 MINERAL



ASL-135567 CHAR



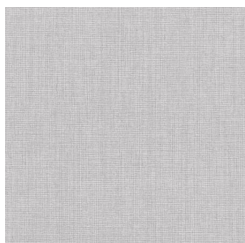
ASL-135573 SLATE



ASL-135577
MULBERRY



ASL-135580 WALL
STREET



ASL-135592 HOWLITE



ASL-135665
CINNABAR



ASL-135713 CREME



ASL-135779
SUNSHINE



ASL-135811 OYSTER

BRISTOL

Wallcoverings » Commercial Wallcoverings



ASL-135839
SEAGRASS



ASL-135841 TAUPE



ASL-135879 LATTE



ASL-135895
ANTIQUITY