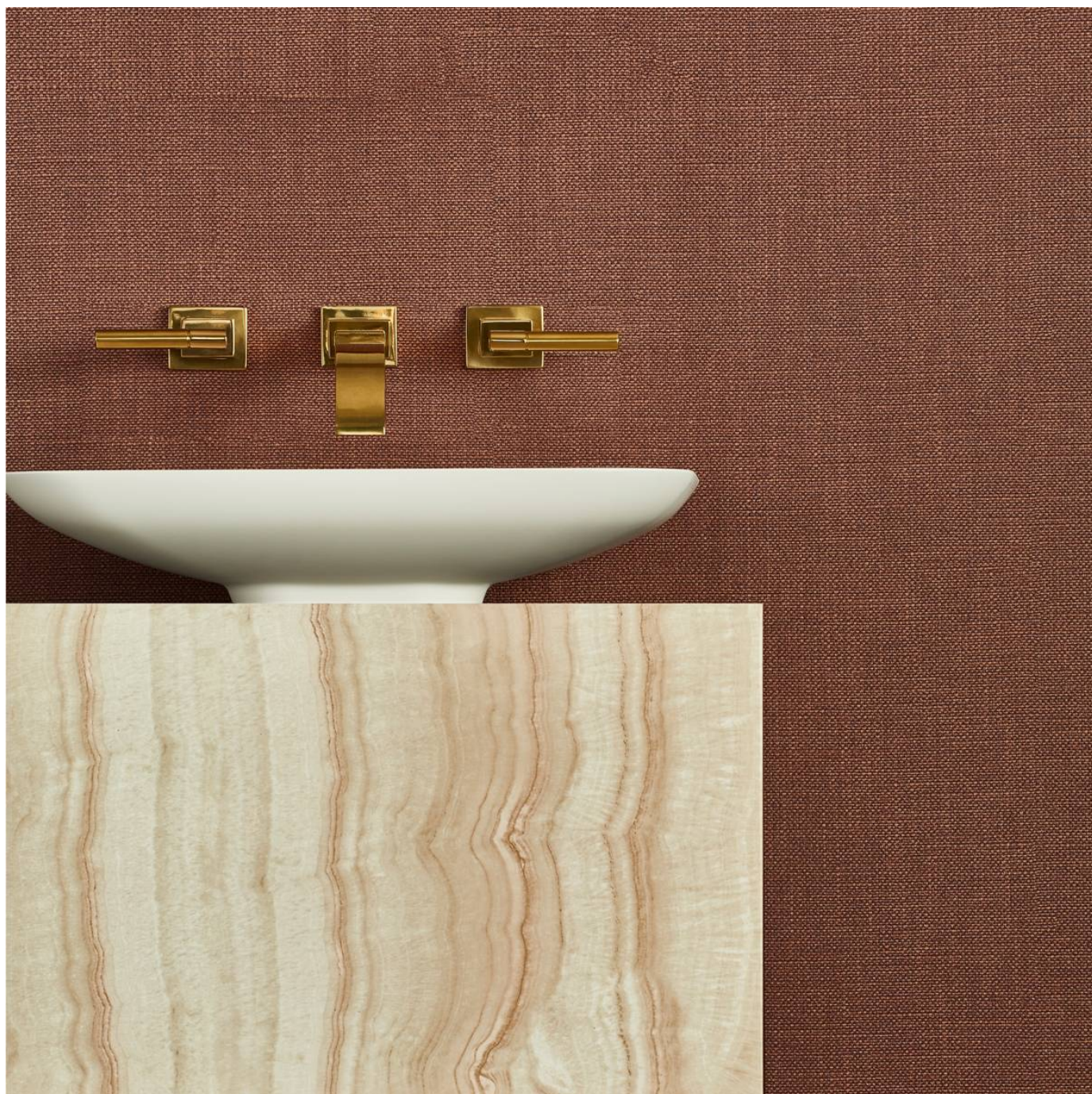


BIG SUR

Wallcoverings » Commercial Wallcoverings



Brand: **Bolta**

Applications: **Walls**

1300 306 399

info@baresque.com.au

baresque.com.au

1 of 5

BIG SUR

Wallcoverings » Commercial Wallcoverings

Big Sur is a 137cm wide commercial wallcovering inspired by USA's Rout 1 coastline that's available in 24 colours. Durable and easy to clean.

✓ **Bleach Cleanable**

Description Big Sur lives up to it's namesake. This chunky grasscloth was inspired by rugged sections of USA's Route 1 coastline. Sure to provide a stunning view, 24 colours will pair back beautifully with Big Sur Block.

Composition Vinyl face on a fabric backing Equivalent to 20oz (452g/m²)

Environmental Info

- Formaldehyde free
- Heavy metals free
- Perfluorooctanoic acid free
- No solvent inks

Low VOC emissions. Any VOCs dissipate quickly (faster than paint) through normal ventilation and have no recognized adverse impact on indoor air quality.

Durability means products do not need to be replaced regularly due to wear and tear and being cleanable, vinyl products are ideal for helping keep commercial environments clean of bacteria.

Baresque will only deal with vinyl manufacturers that comply with applicable state and federal regulations, provide a factory that is safe and clean for its employees to work in, recycle scrap and inks during the manufacturing process to minimize waste related to production.

Pattern Repeat Size N/A

Roll Size 137cm wide x 27.4m - Available by the lineal metre

Fire Rating Tested in accordance with AS ISO 9705 2003 for the purpose of determining the Group Number classification as required by the Building Code of Australia for the control of fire spread on interior wall and ceiling linings.

The result achieved was:
Classification - Group 2
Specific Extinction - Less than 250m²/kg

BIG SUR

Wallcoverings » Commercial Wallcoverings

Lead Time

- 2-weeks (approx.) from Wednesday, subject to stock availability.
- Additional 1-week for Western Australia.
- Express delivery is available subject to a surcharge. Contact Baresque for details and pricing.

Suggested Installation

Reverse hang / overlap and double cut.

Baresque recommends and supply Roman brand adhesives and primers.

Care Instructions

Use cloth with any of the following in preferred order of use:

- 1: Clear warm water
- 2: Mild solution of liquid detergent and warm water
- 3: Isopropyl Alcohol (a.k.a. rubbing alcohol)

Remove any detergent with a clean, damp cloth. Gently pat dry.

For more difficult stains, dampen a soft white cloth with a solution of household bleach (10% bleach / 90% water). Rub gently.

Rinse with a water dampened cloth to remove bleach concentration.

Do not use solvent based or concentrated abrasive cleaning agents, lacquer thinners or nail polish remover as these may cause discolouration over a period of time.

Always test in an inconspicuous area first.

If care instructions don't deliver the expected results, cease cleaning method immediately and contact Baresque for assistance.

Warranty

5-year warranty. Visit [baresque.com.au/warranty](https://www.baresque.com.au/warranty) for complete details.

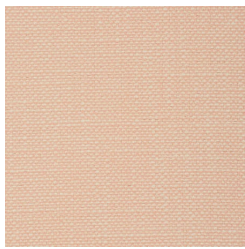
Additional Comments

Big Sur is designed to be mixed and matched with Big Sur Block.

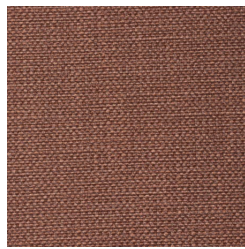
BIG SUR

Wallcoverings » Commercial Wallcoverings

Colour & Finish Options



BB-SU-01 SANTA
ROSA



BB-SU-02 REDWOOD



BB-SU-03 PFEIFFER
PLUM



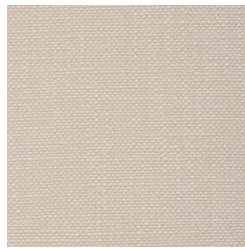
BB-SU-04 COAST
ROAD



BB-SU-05 EWOLDSEN
TRAIL



BB-SU-06 ROCKY
POINT



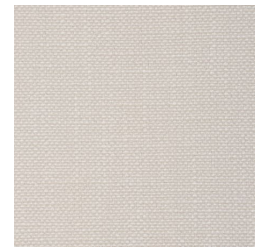
BB-SU-07 COVE



BB-SU-08 CARMEL



BB-SU-09 CANYON



BB-SU-10 BIXBY BEIGE



BB-SU-11 ROADHOUSE



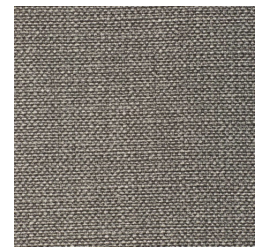
BB-SU-12 RUGGED
TAUPE



BB-SU-13 SAND
DOLLAR



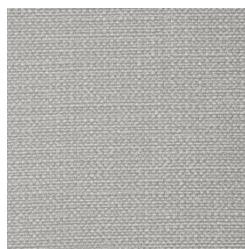
BB-SU-14 CLIFF



BB-SU-15 GREY
WHALE



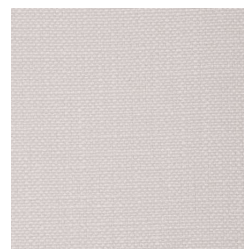
BB-SU-16 CALA LILY



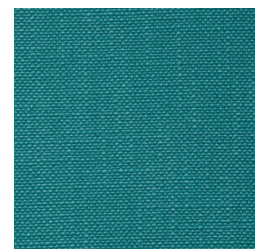
BB-SU-17 ROUTE 1



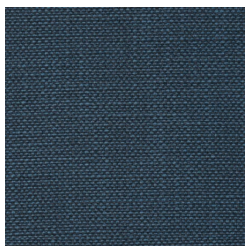
BB-SU-18 OTTER



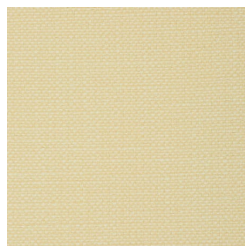
BB-SU-19 TREEBONES



BB-SU-20 PACIFIC



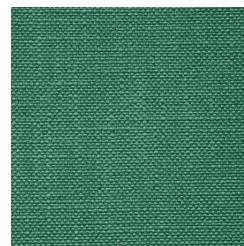
BB-SU-21 MCWAY
NAVY



BB-SU-22 CALI SUN



BB-SU-23 LIMEKILN



BB-SU-24 SPIRIT
GARDEN

BIG SUR

Wallcoverings » Commercial Wallcoverings
