

BALI

Wallcoverings » Commercial Wallcoverings



Brand: **Bolta**

Applications: **Walls**

1300 306 399

info@baresque.com.au

baresque.com.au

1 of 4

BALI

Wallcoverings » Commercial Wallcoverings

Bali is a 137cm wide wallcovering with a large entwined texture that mimics grass, skirts and tiki huts. Available in 18 colourways.

✓ **Bleach Cleanable**

Description	Bali was inspired by an oasis escape. The larger entwined texture has a thatched effect that mimics grass skirts and tiki huts. Pairs with Bali Grille.
Composition	Vinyl face on a fabric backing Equivalent to 20oz (452 g/m ²)
Environmental Info	<p>Formaldehyde free</p> <p>Heavy metals free</p> <p>Perfluorooctanoic acid free</p> <p>No solvent inks</p> <p>Low VOC emissions. Any VOCs dissipate quickly (faster than paint) through normal ventilation and have no recognized adverse impact on indoor air quality.</p> <p>Durability means products do not need to be replaced regularly due to wear and tear and being cleanable, vinyl products are ideal for helping keep commercial environments clean of bacteria.</p> <p>Baresque will only deal with vinyl manufacturers that comply with applicable state and federal regulations, provide a factory that is safe and clean for its employees to work in, recycle scrap and inks during the manufacturing process to minimize waste related to production.</p>
Pattern Repeat Size	N/A
Roll Size	137cm wide x 27.4m - Available by the lineal metre
Fire Rating	<p>Tested in accordance with AS ISO 9705 2003 for the purpose of determining the Group Number classification as required by the Building Code of Australia for the control of fire spread on interior wall and ceiling linings.</p> <p>The result achieved was: Classification - Group 2 Specific Extinction - Less than 250m²/kg</p>
Lead Time	<ul style="list-style-type: none">• 2-weeks (approx.) from Wednesday, subject to stock availability.• Additional 1-week for Western Australia.• Express delivery is available subject to a surcharge. Contact Baresque for details and pricing.

BALI

Wallcoverings » Commercial Wallcoverings

Suggested Installation

Reverse hang / overlap and double cut.

Baresque recommends and supply Roman brand adhesives and primers.

Care Instructions

Use cloth with any of the following in preferred order of use:

1: Clear warm water

2: Mild solution of liquid detergent and warm water

3: Isopropyl Alcohol (a.k.a. rubbing alcohol)

Remove any detergent with a clean, damp cloth. Gently pat dry.

For more difficult stains, dampen a soft white cloth with a solution of household bleach (10% bleach / 90% water). Rub gently.

Rinse with a water dampened cloth to remove bleach concentration.

Do not use solvent based or concentrated abrasive cleaning agents, lacquer thinners or nail polish remover as these may cause discolouration over a period of time.

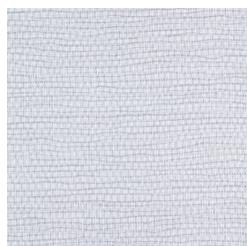
Always test in an inconspicuous area first.

If care instructions don't deliver the expected results, cease cleaning method immediately and contact Baresque for assistance.

Warranty

5-year warranty. Visit baresque.com.au/warranty for complete details.

Colour & Finish Options



BB-BA-01 WATER LILY



BB-BA-02 DOLPHIN
GREY



BB-BA-03 BLACK
COBRA



BB-BA-04 RICE FIELD



BB-BA-05 STONE
CARVING



BB-BA-06 REEF
SHARK



BB-BA-07 JASMINE



BB-BA-08 TAMARIND



BB-BA-09 ARABICA
BEAN



BB-BA-10 SUNFISH



BB-BA-11 BAMBOO



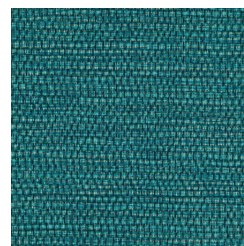
BB-BA-12 VOLCANO



BB-BA-13 SAND



BB-BA-14 JACKFRUIT



BB-BA-15 SEASIDE



BB-BA-16 OLEANDER



BB-BA-17 HIBISCUS



BB-BA-18 ORCHID