

AXIS

Wallcoverings » Commercial Wallcoverings



Brand: **York**

Applications: **Walls**

1300 306 399

info@baresque.com.au

baresque.com.au

1 of 5

AXIS

Wallcoverings » Commercial Wallcoverings



axis-promo-2.jpg

AXIS

Wallcoverings » Commercial Wallcoverings

Axis is a 140cm wide wallcovering with a small geometric pattern that's available in 15 colours. Durable, easy to clean and cost effective.

Composition	Vinyl face on a non-woven backing
Environmental Info	<p>Formaldehyde free</p> <p>Heavy metals free</p> <p>Perfluorooctanoic acid free</p> <p>No solvent inks</p> <p>Low VOC emissions. Any VOCs dissipate quickly (faster than paint) through normal ventilation and have no recognized adverse impact on indoor air quality.</p> <p>Durability means products do not need to be replaced regularly due to wear and tear and being cleanable, vinyl products are ideal for helping keep commercial environments clean of bacteria.</p> <p>Baresque will only deal with vinyl manufacturers that comply with applicable state and federal regulations, provide a factory that is safe and clean for its employees to work in, recycle scrap and inks during the manufacturing process to minimize waste related to production.</p>
Pattern Repeat Size	N/A
Roll Size	140cm (about 137cm after installation with double cutting) x 27.4m - Available by the lineal metre.
Fire Rating	<p>Tested in accordance with AS ISO 9705 2003 for the purpose of determining the Group Number classification as required by the Building Code of Australia for the control of fire spread on interior wall and ceiling linings.</p> <p>The result achieved was: Classification - Group 2 Specific Extinction - Less than 250m²/kg</p>
Lead Time	<ul style="list-style-type: none">• 2-weeks (approx.) from Wednesday, subject to stock availability.• Additional 1-week for Western Australia.• Express delivery is available subject to a surcharge. Contact Baresque for details and pricing.
Suggested Installation	<p>Reverse hang / overlap and double cut.</p> <p>Baresque recommends and supply Roman brand adhesives and primers.</p>

Care Instructions

Use cloth with any of the following in preferred order of use:

1: Clear warm water

2: Mild solution of liquid detergent and warm water

3: Isopropyl Alcohol (a.k.a. rubbing alcohol)

Remove any detergent with a clean, damp cloth. Gently pat dry.

For more difficult stains, dampen a soft white cloth with a solution of household bleach (10% bleach / 90% water). Rub gently.

Rinse with a water dampened cloth to remove bleach concentration.

Do not use solvent based or concentrated abrasive cleaning agents, lacquer thinners or nail polish remover as these may cause discolouration over a period of time.

Always test in an inconspicuous area first.

If care instructions don't deliver the expected results, cease cleaning method immediately and contact Baresque for assistance.

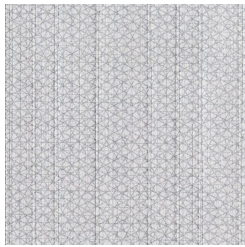
Warranty

5-year warranty. Visit baresque.com.au/warranty for complete details.

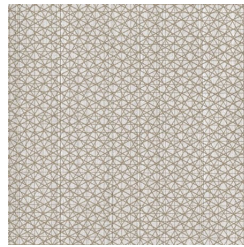
Colour & Finish Options



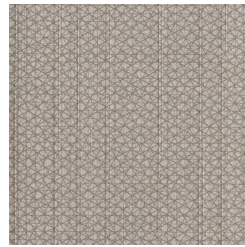
COLOURWAY CARD



SG2737



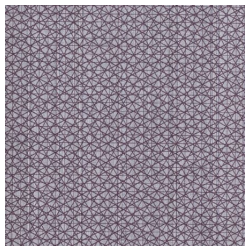
SG2738



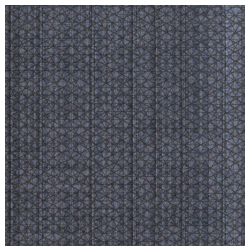
SG2739



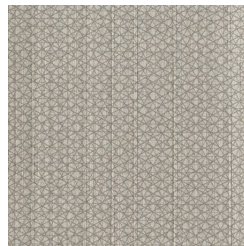
SG2740



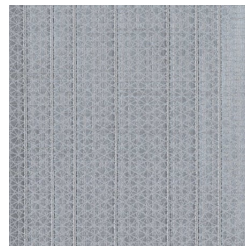
SG2741



SG2742



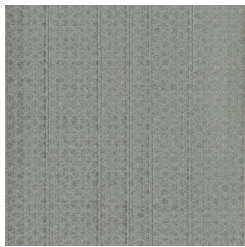
SG2743



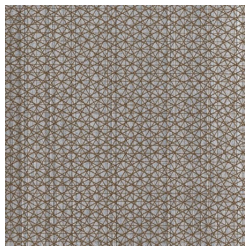
SG2744



SG2745



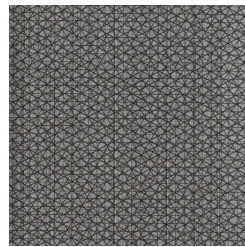
SG2746



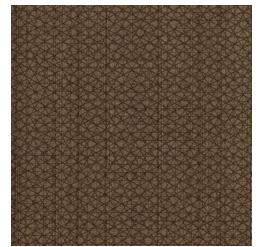
SG2747



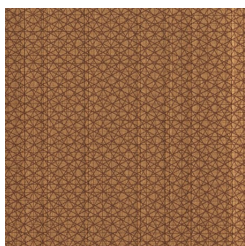
SG2748



SG2749



SG2750



SG2751