

# ASTORIA ASL

Wallcoverings » Commercial Wallcoverings

---



Brand: **Versa**

Applications: **Walls**

1300 306 399

[info@baresque.com.au](mailto:info@baresque.com.au)

[baresque.com.au](http://baresque.com.au)

1 of 4

# ASTORIA ASL

Wallcoverings » Commercial Wallcoverings

Astoria is a 137cm wide vinyl wallcovering embossing with accentuated metallic finish that's available in 16 neutral colours.

✓ **Bleach Cleanable**

**Description** Astoria is a classic embossing with an exquisite interpretation to add a new twist. An accentuated metallic finish gives a subtle light reflectiveness, adding dimension and depth to this emboss. Astoria is available in 16 colors across a mostly neutral palette in keeping with the jute and natural material influence.

**Composition** Vinyl face on a fabric backing Equivalent to 20oz (452 g/m<sup>2</sup>)

**Environmental Info**

Formaldehyde free

Heavy metals free

Perfluorooctanoic acid free

No solvent inks

Low VOC emissions. Any VOCs dissipate quickly (faster than paint) through normal ventilation and have no recognized adverse impact on indoor air quality.

Durability means products do not need to be replaced regularly due to wear and tear and being cleanable, vinyl products are ideal for helping keep commercial environments clean of bacteria.

Baresque will only deal with vinyl manufacturers that comply with applicable state and federal regulations, provide a factory that is safe and clean for its employees to work in, recycle scrap and inks during the manufacturing process to minimize waste related to production.

**Pattern Repeat Size** N/A

**Roll Size** 137cm wide x 27.4m - Available by the lineal metre

**Fire Rating**

Tested in accordance with AS ISO 9705 2003 for the purpose of determining the Group Number classification as required by the Building Code of Australia for the control of fire spread on interior wall and ceiling linings.

The result achieved was:  
Classification - Group 2  
Specific Extinction - Less than 250m<sup>2</sup>/kg

# ASTORIA ASL

Wallcoverings » Commercial Wallcoverings

---

Lead Time	<ul style="list-style-type: none"><li>• 2-weeks (approx.) from Wednesday, subject to stock availability.</li><li>• Additional 1-week for Western Australia.</li><li>• Express delivery is available subject to a surcharge. Contact Baresque for details and pricing.</li></ul>
-----------	---

---

Suggested Installation	<p>Reverse hang / overlap and double cut.</p> <p>Baresque recommends and supply Roman brand adhesives and primers.</p>
------------------------	--

---

Care Instructions	<p>Always use a clean, white, soft cloth.</p> <p>Use cloth with any of the following in preferred order of use:</p> <ol style="list-style-type: none"><li>1: Clear warm water</li><li>2: Mild solution of liquid detergent and warm water</li><li>3: Isopropyl Alcohol (a.k.a. rubbing alcohol)</li></ol> <p>Remove any detergent with a clean, damp cloth. Gently pat dry.</p> <p>For more difficult stains, dampen a soft white cloth with a solution of household bleach (10% bleach / 90% water). Rub gently.</p> <p>Rinse with a water dampened cloth to remove bleach concentration.</p> <p>DO NOT USE solvent based or concentrated abrasive cleaning agents, lacquer thinners, nail polish remover as these may cause discolouration over a period of time.</p> <p>Always test in an inconspicuous area first. If care instructions don't deliver the expected results, cease cleaning method immediately and contact Baresque for assistance.</p>
-------------------	--

---

Warranty	5-year warranty. Visit <a href="https://baresque.com.au/warranty">baresque.com.au/warranty</a> for complete details.
----------	--

---



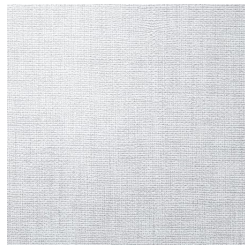
# ASTORIA ASL

Wallcoverings » Commercial Wallcoverings

## Colour & Finish Options

### COLOURWAY CARD

COLOURWAY CARD



A197-081 SILVER LEAF



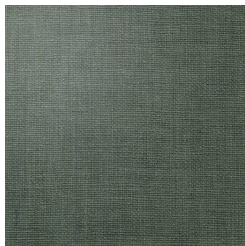
A197-106 NORTH BAY



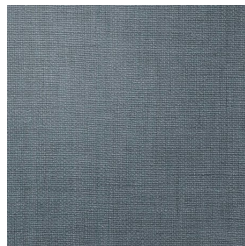
A197-118 TULLE



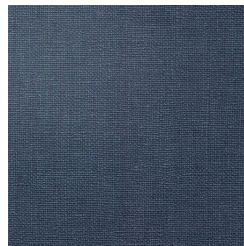
A197-153 TATAMI



A197-276 SEAGRASS



A197-358 JUNIPER



A197-394 WISTERIA



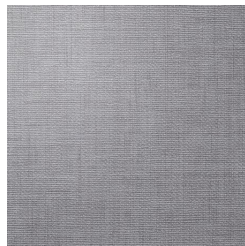
A197-512 PRAIRIE



A197-524 PAPER  
BIRCH



A197-532 KORA



A197-547 GILDED



A197-561 CABLING



A197-579 RAFFIA



A197-582 CHAINMAIL



A197-723 REED



A197-785 SAVANNA