

UPLIFT

Wallcoverings » Advanced Wall Protection



Brand: **P3tec**

Applications: **Walls**

UPLIFT

Wallcoverings » Advanced Wall Protection

Uplift is a 137cm wide wall protection with a woven look that's available in 18 colours. It's impact, chemical and abrasion resistant.

- ✓ Bleach Cleanable
- ✓ Easy Clean
- ✓ Extended Warranty
- ✓ Extreme Durability
- ✓ High Stain Resistance
- ✓ Ultra Performance

Description	<p>Check out the videos to see for yourself how Advanced Wall Protection performs - Impact, Abrasion, Cleanability - or check out the brochure in the DOWNLOADS</p> <p>The technical innovation of P3TEC is a beautiful wall protection collection with three key advantages - High Performance, Easy to Use, Beautiful Design. Bring the look of silk, linen and wovens to high traffic, high abuse areas in healthcare, food service, transportation and more.</p>
Composition	<p>Extra thick vinyl face on a heavy polyester / cotton knit fabric backing Equivalent to 40oz (900g/m²)</p>
Environmental Info	<p>Formaldehyde free</p> <p>Heavy metals free</p> <p>Perfluorooctanoic acid free</p> <p>No solvent inks</p> <p>Low VOC emissions. Any VOCs dissipate quickly (faster than paint) through normal ventilation and have no recognized adverse impact on indoor air quality.</p> <p>Durability means products do not need to be replaced regularly due to wear and tear and being cleanable, vinyl products are ideal for helping keep commercial environments clean of bacteria.</p> <p>Baresque will only deal with vinyl manufacturers that comply with applicable state and federal regulations, provide a factory that is safe and clean for its employees to work in, recycle scrap and inks during the manufacturing process to minimize waste related to production.</p>
Pattern Repeat Size	N/A
Roll Size	137cm. Trims to 122cm x 13.7m Available by the FULL ROLL ONLY
Fire Rating	<p>Tested in accordance with AS ISO 9705 2003 for the purpose of determining the Group Number classification as required by the Building Code of Australia for the control of fire spread on interior wall and ceiling linings.</p> <p>The result achieved was: Classification - Group 2 Specific Extinction - Less than 250m²/kg</p>

UPLIFT

Wallcoverings » Advanced Wall Protection

Lead Time	<ul style="list-style-type: none">• 2-weeks (approx.) from Wednesday, subject to stock availability.• Additional 1-week for Western Australia.• Express delivery is available subject to a surcharge. Contact Baresque for details and pricing.
-----------	---

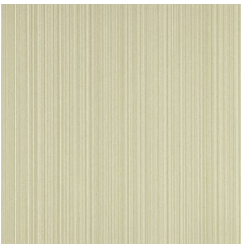
Suggested Installation	<p>Reverse hang alternate drops/overlap and double cut.</p> <p>Advanced Wall Protection requires a specific installation method and we strongly recommend you use one of our recommended installers.</p> <p>Download the Installation Instructions for details.</p> <p>Baresque recommends and supply Roman brand adhesives and primers.</p>
------------------------	--

Care Instructions	<p>1. Completion:</p> <p>Immediately upon completion of installation, installer shall make sure that these products are cleaned and free of any layout marks, excess adhesive or surface blemishes. Remove excess adhesive with methods and materials recommended by the adhesive manufacturer.</p> <p>2. Clean-Up and Routine Maintenance:</p> <p>Rigid Profiles: For general cleaning, use disinfectant cleaner.</p> <p>All Purpose Cleaner Heavy Duty: Use a clean, lint-free cloth and wipe clean. Do not use any abrasive cleaning cloths or sponges.</p> <p>1. Spray products onto profile and wipe with a dampened cloth.</p> <p>2. Repeat process if stain remains. If cleaning product residue remains, rinse with water.</p>
-------------------	--

Warranty	5-year warranty. Visit baresque.com.au/warranty for complete details.
----------	--

Additional Comments	P3TEC Uplift is also available in matching Commercial Wallcovering (20oz) Linage. Go to the DOWNLOADS tab for details.
---------------------	--

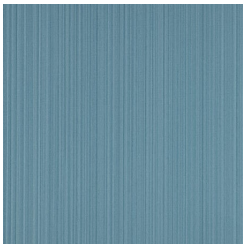
Colour & Finish Options



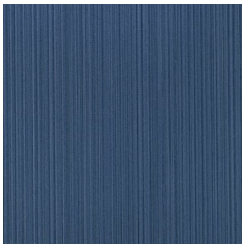
P3T-60100 FRESH
PEAR



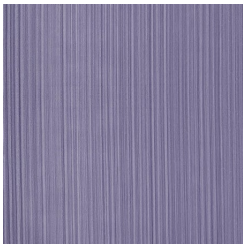
P3T-60101 EARLY
SPRING



P3T-60102 CLEAR
BLUE



P3T-60103 LAPIS



P3T-60104 LILAC



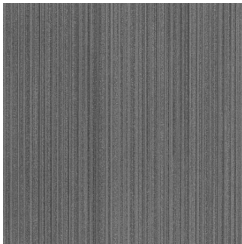
P3T-60105
BREATHLESS



P3T-60106 SNOW



P3T-60107 SILVER
WASH



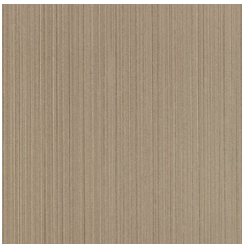
P3T-60108 PEWTER
GREY



P3T-60109
CHOCOLATE



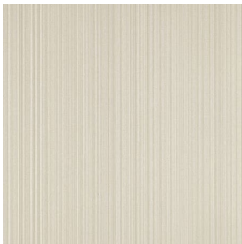
P3T-60110 CINNAMON



P3T-60111 RAW
SUGAR



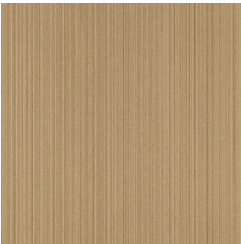
P3T-60112 BONE
WHITE



P3T-60113 WINTER
IVORY



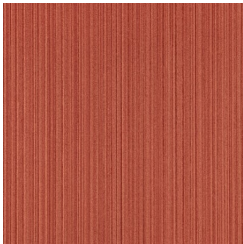
P3T-60114 ROYAL
CREAM



P3T-60115 GINGER



P3T-60116 OILED
BRASS



P3T-60117 DANGER