

# BALANCE

Wallcoverings » Advanced Wall Protection

---



Brand: **P3tec**

Applications: **Walls**

1300 306 399

[info@baresque.com.au](mailto:info@baresque.com.au)

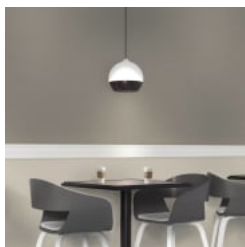
[baresque.com.au](http://baresque.com.au)

1 of 5

# BALANCE

Wallcoverings » Advanced Wall Protection

---



p3tec\_balance\_cafe-  
promo-2.jpg

# BALANCE

Wallcoverings » Advanced Wall Protection

Balance is a 137cm wide wall protection with a woven look that's resistant to impact, chemicals and abrasion. Available in 20 neutral colours.

- ✓ Bleach Cleanable
- ✓ Easy Clean
- ✓ Extended Warranty
- ✓ Extreme Durability
- ✓ High Stain Resistance
- ✓ Ultra Performance

Description	<p>Check out the videos to see for yourself how Advanced Wall Protection performs - <a href="#">Impact, Abrasion, Cleanability</a> - or check out the brochure in the <a href="#">DOWNLOADS</a></p> <p>The technical innovation of P3TEC is a beautiful wall protection collection with three key advantages - High Performance, Easy to Use, Beautiful Design. Bring the look of silk, linen and wovens to high traffic, high abuse areas in healthcare, food service, transportation and more.</p>
Composition	<p>Extra thick vinyl face on a heavy polyester / cotton knit fabric backing Equivalent to 40oz (900g/m<sup>2</sup>)</p>
Environmental Info	<p>Formaldehyde free</p> <p>Heavy metals free</p> <p>Perfluorooctanoic acid free</p> <p>No solvent inks</p> <p>Low VOC emissions. Any VOCs dissipate quickly (faster than paint) through normal ventilation and have no recognized adverse impact on indoor air quality.</p> <p>Durability means products do not need to be replaced regularly due to wear and tear and being cleanable, vinyl products are ideal for helping keep commercial environments clean of bacteria.</p> <p>Baresque will only deal with vinyl manufacturers that comply with applicable state and federal regulations, provide a factory that is safe and clean for its employees to work in, recycle scrap and inks during the manufacturing process to minimize waste related to production.</p>
Pattern Repeat Size	N/A
Roll Size	137cm. Trims to 122cm x 13.7m Available by the FULL ROLL ONLY
Fire Rating	<p>Tested in accordance with AS ISO 9705 2003 for the purpose of determining the Group Number classification as required by the Building Code of Australia for the control of fire spread on interior wall and ceiling linings.</p> <p>The result achieved was: Classification - Group 2 Specific Extinction - Less than 250m<sup>2</sup>/kg</p>

# BALANCE

Wallcoverings » Advanced Wall Protection

---

Lead Time	<ul style="list-style-type: none"><li>• 2-weeks (approx.) from Wednesday, subject to stock availability.</li><li>• Additional 1-week for Western Australia.</li><li>• Express delivery is available subject to a surcharge. Contact Baresque for details and pricing.</li></ul>
-----------	---

---

Suggested Installation	<p>Reverse hang alternate drops/overlap and double cut.</p> <p>Advanced Wall Protection requires a specific installation method and we strongly recommend you use one of our recommended installers.</p> <p>Download the Installation Instructions for details.</p> <p>Baresque recommends and supply Roman brand adhesives and primers.</p>
------------------------	--

---

Care Instructions	<p>1. Completion:</p> <p>Immediately upon completion of installation, installer shall make sure that these products are cleaned and free of any layout marks, excess adhesive or surface blemishes. Remove excess adhesive with methods and materials recommended by the adhesive manufacturer.</p> <p>2. Clean-Up and Routine Maintenance:</p> <p>Rigid Profiles: For general cleaning, use disinfectant cleaner.</p> <p>All Purpose Cleaner Heavy Duty: Use a clean, lint-free cloth and wipe clean. Do not use any abrasive cleaning cloths or sponges.</p> <p>1. Spray products onto profile and wipe with a dampened cloth.</p> <p>2. Repeat process if stain remains. If cleaning product residue remains, rinse with water.</p>
-------------------	--

---

Warranty	5-year warranty. Visit <a href="https://baresque.com.au/warranty">baresque.com.au/warranty</a> for complete details.
----------	--

---



# BALANCE

Wallcoverings » Advanced Wall Protection

## Colour & Finish Options



P3T-60270  
PERIWINKLE



P3T-60271 SEA GREEN



P3T-60272 AQUA



P3T-60273 BLUE SAGE



P3T-60274 ELEGANT  
TAUPE



P3T-60275 SANDISH



P3T-60276 PALE  
AMBER



P3T-60277 SUNSHINE  
SAND



P3T-60278 CREAM



P3T-60279 PEARLED



P3T-60280 SILVERY  
MIST



P3T-60281 DUSTY  
TRAIL



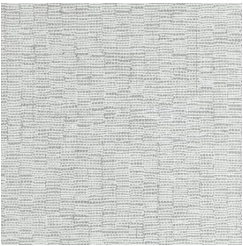
P3T-60282 ANTIQUE  
SILVER



P3T-60283 LIGHT  
GREIGE



P3T-60284 FRESH  
WHITE



P3T-60285 NOBLE  
GREY



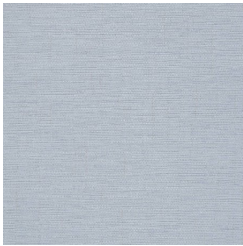
P3T-60286 SLATE



P3T-60287 INK WELL



P3T-60288 DEEP  
INDIGO



P3T-60289 BLUE BELL