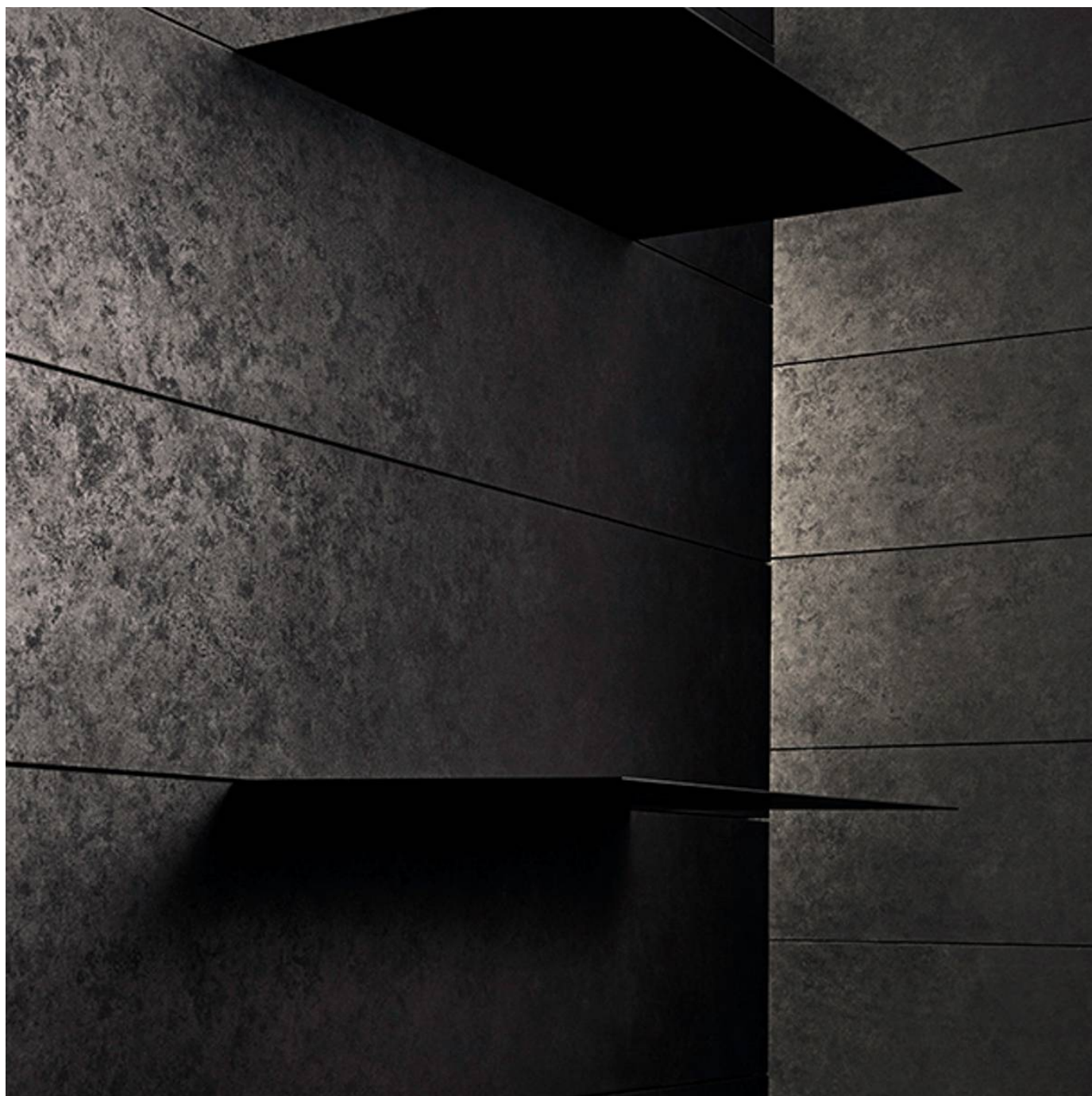


RUST

Wallcoverings » Architectural Film



Brand: **Reatec**

Applications: **Walls, Joinery**

1300 306 399

info@baresque.com.au

baresque.com.au

1 of 5

RUST

Wallcoverings » Architectural Film



RUST

Wallcoverings » Architectural Film

The Reatec Rust collection has a range of beautiful textural designs reflecting an industrial, urban, and sleek design.

✓ **Bleach Cleanable**

Description	Reatec is a durable and realistic architectural film with a pressure sensitive adhesive and air removal system backing. Utilising state of the art, multi layer printing and minute embossing, its appearance is almost indistinguishable from real wood or stone. Reatec is stain and solvent/chemical resistant, anti-bacterial, anti-mould, colorfast, washable, scrubbable, and abrasion resistant. A pdf with full Reatec Test Results can be found on the product Downloads tab on the website. Reatec can be stretched to cover the corners and curves and is suitable for both indoor and outdoor uses including kitchens and bathrooms. Go to the DOWNLOADS tab for our Reatec Additional Spec Sheet and Installation Guide.
Composition	Reatec is a durable and realistic architectural film with a pressure sensitive adhesive and air removal system backing 350 g/m ²
Pattern Repeat Size	N/A
Roll Size	122cm wide x 50m - Available by the lineal metre
Fire Rating	<p>Tested in accordance with AS ISO 9705 2003 for the purpose of determining the Group Number classification required by the Building Code of Australia for the control of fire spread on interior wall and ceiling linings.</p> <p>Classification - Group 1 Specific Extinction - Less than 250m²/kg</p>
Lead Time	<ul style="list-style-type: none">• 2-weeks (approx.) from Wednesday, subject to stock availability.• Additional 1-week for Western Australia.• Express delivery is available subject to a surcharge. Contact Baresque for details and pricing.
Suggested Installation	<p>Reatec is a specialised product and should only be installed by a trained installer.</p> <p>It is strongly recommended that the installation instructions from our product downloads are read and understood.</p> <p>As Reatec is a thin film, the substrate should be prepared as smooth as possible to avoid visible unevenness.</p> <p>Reatec can be installed and repaired on-site, resulting in almost no downtime for both interior and exterior applications.</p> <p>Feel free to contact Baresque with any installation questions.</p>

RUST

Wallcoverings » Architectural Film

Care Instructions

Wipe material with a clean, soft cloth dampened with a mild solution of liquid detergent and warm water. Repeat using only clean water, then dry with a lint free cloth.

Avoid using wax polishes, solvents or concentrated abrasives.

For more difficult stains, dampen a soft white cloth with a solution of household bleach (10% bleach / 90% water). Rub gently. Rinse with a water dampened cloth to remove bleach concentration.

Always test in an inconspicuous area first. If care instructions don't deliver the expected results, cease cleaning method immediately and contact Baresque for assistance.

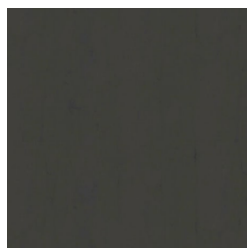
Warranty

2-year warranty. Visit baresque.com.au/warranty for complete details.

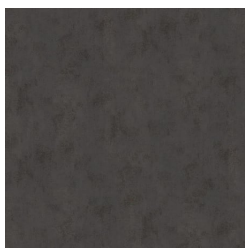
RUST

Wallcoverings » Architectural Film

Colour & Finish Options



TC4544



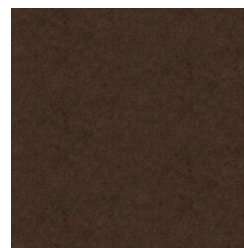
TD4545



TD4546



TD4547



TD4548



TD4549



TD4550



TD4551



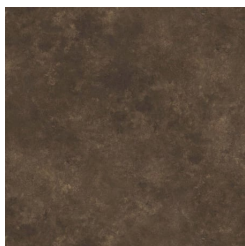
TD5201



TD5202



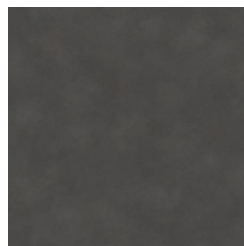
TD5203



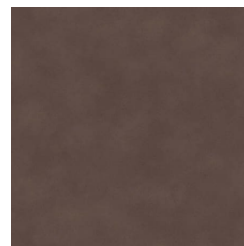
TN5311



TN5312



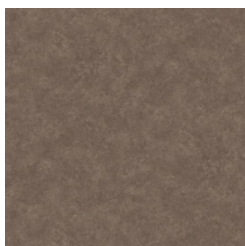
TN5313



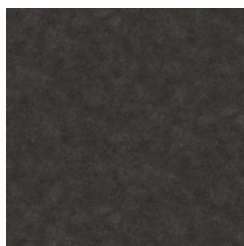
TN5314



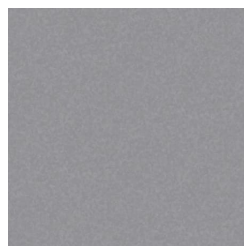
TX5196



TX5197



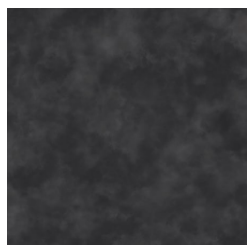
TX5198



TX5199



TX5200



TX5610