

AMUSEMENT

Wallcoverings » Architectural Film



Brand: **Reatec**

AMUSEMENT

Wallcoverings » Architectural Film



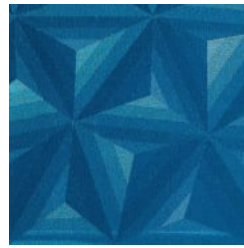
RD5562



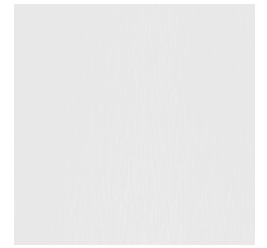
RD5563



RD5564



RD5565



TC4637



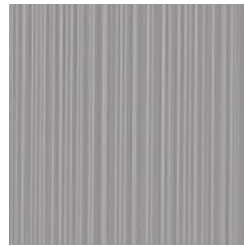
TC4638



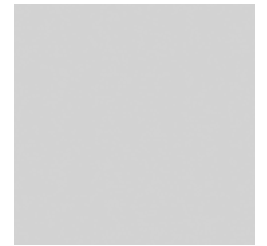
TC4639



TC4640



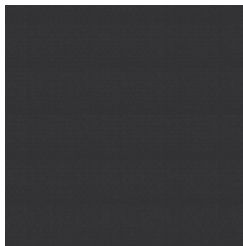
TR4431



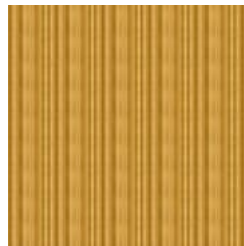
TR4452



TR4453



TR4454



TR5567



TU4621



TU4622



TU4625



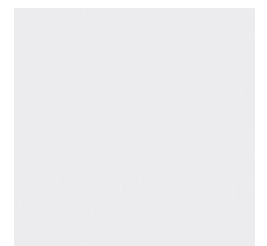
TU4627



TU4628



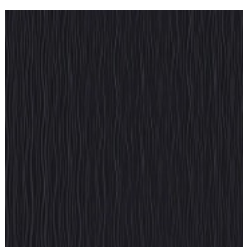
TU4629



TU4630



TU4631



TU4632



TU5219



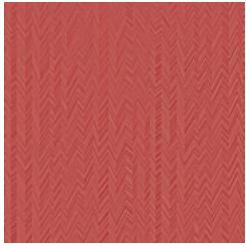
TU5220



TU5221

AMUSEMENT

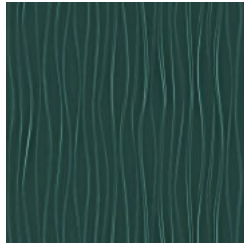
Wallcoverings » Architectural Film



TU5222



TU5223



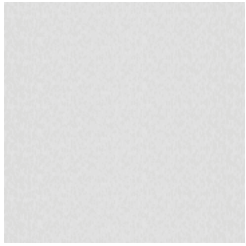
TX4633



TX4634



TX4645



TX4646

AMUSEMENT

Wallcoverings » Architectural Film

Amusement - Reatec is a 122cm wide adhesive film that appears almost indistinguishable from real wood or stone. Available in 34 colours.

✓ **Bleach Cleanable**

Description Reatec is a durable and realistic architectural film with a pressure sensitive adhesive and air removal system backing. Utilising state of the art, multi layer printing and minute embossing, its appearance is almost indistinguishable from real wood or stone. Reatec is stain and solvent/chemical resistant, anti-bacterial, anti-mould, colorfast, washable, scrubbable, and abrasion resistant. A pdf with full Reatec Test Results can be found on the product Downloads tab on the website. Reatec can be stretched to cover the corners and curves and is suitable for both indoor and outdoor uses including kitchens and bathrooms. Go to the DOWNLOADS tab for our Reatec Additional Spec Sheet and Installation Guide.

Roll Size 122cm wide x 50m - Available by the lineal metre

Composition Reatec is a durable and realistic architectural film with a pressure sensitive adhesive and air removal system backing 350 g/m²

Pattern Repeat Size N/A

Fire Rating Tested in accordance with AS ISO 9705 2003 for the purpose of determining the Group Number classification required by the Building Code of Australia for the control of fire spread on interior wall and ceiling linings.

Classification - Group 1
Specific Extinction - Less than 250m²/kg

Warranty 2-year warranty. Visit [baresque.com.au/warranty](https://www.baresque.com.au/warranty) for complete details.

Lead Time

- 2-weeks (approx.) from Wednesday, subject to stock availability.
- Additional 1-week for Western Australia.
- Express delivery is available subject to a surcharge. Contact Baresque for details and pricing.

AMUSEMENT

Wallcoverings » Architectural Film

Suggested Installation

Reatec is a specialised product and should only be installed by a trained installer.

It is strongly recommended that the installation instructions from our product downloads are read and understood.

As Reatec is a thin film, the substrate should be prepared as smooth as possible to avoid visible unevenness.

Reatec can be installed and repaired on-site, resulting in almost no downtime for both interior and exterior applications.

Feel free to contact Baresque with any installation questions.

Care Instructions

Wipe material with a clean, soft cloth dampened with a mild solution of liquid detergent and warm water. Repeat using only clean water, then dry with a lint free cloth.

Avoid using wax polishes, solvents or concentrated abrasives.

For more difficult stains, dampen a soft white cloth with a solution of household bleach (10% bleach / 90% water). Rub gently. Rinse with a water dampened cloth to remove bleach concentration.

Always test in an inconspicuous area first. If care instructions don't deliver the expected results, cease cleaning method immediately and contact Baresque for assistance.

AMUSEMENT

Wallcoverings » Architectural Film

Colour & Finish Options