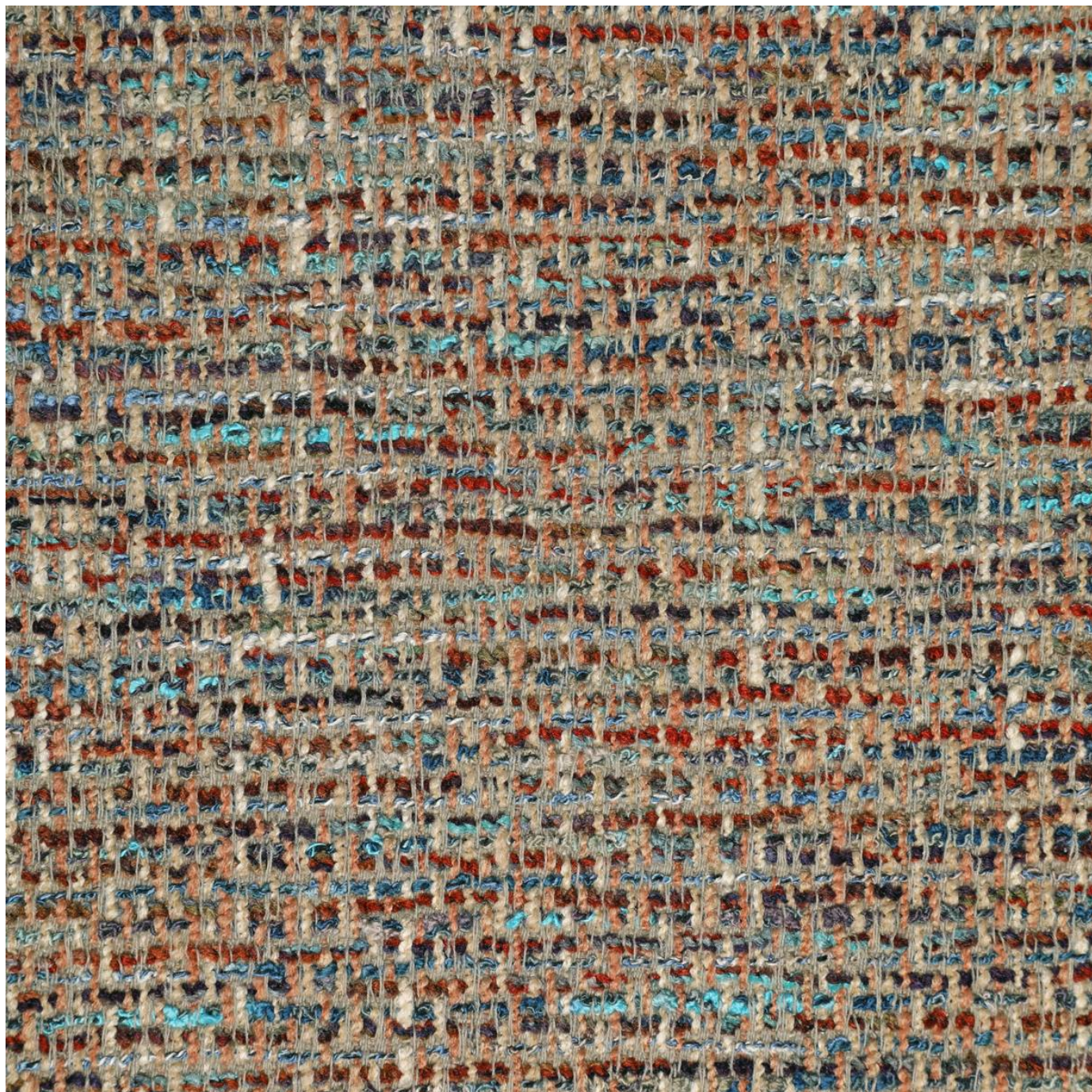


WAYFARER

Fabrics » Woven Fabrics



Brand: **Crypton**

Applications: **Upholstery**

1300 306 399

info@baresque.com.au

baresque.com.au

1 of 5

WAYFARER

Fabrics » Woven Fabrics



wayfarer_promo1.jpg



wayfarer_promo2.jpg



burch_wayfarer_promo1
0.jpg



burch_wayfarer_promo8
.jpg

WAYFARER

Fabrics » Woven Fabrics

Wayfarer is a 137cm wide woven upholstery with a modern day tweed design that's available in 19 colourways. Water, soil and stain repellent.

✓ **Bleach Cleanable**

✓ **Moisture Barrier**

✓ **Stain Repellent**

✓ **Spill Repellent**

✓ **PFAS Free**

✓ **Greenguard Gold Certified**

Description Wayfarer is a modern day tweed with an attitude that is bound to boost your mood. Available in a palette of twenty happy hues, this confetti look is ready to mix and mingle. CRYPTON is a permanent moisture, soil resistance and anti-microbial protection backing.

Composition CRYPTON - 68% polyester, 29% viscose, 3% cotton

Environmental Info Greenguard Certifications contributes towards LEED credits for low-emitting furniture and ensures compliance with Business and Institutional Furniture Manufacturers Association (BIFMA) X7.1 standard and BIFMA e3 credit 7.6.1.

Greenguard Gold Certification standard includes:

* Health-based criteria for additional chemicals and requires lower total VOC emissions levels to help ensure that products are acceptable for use in environments like schools and healthcare facilities.

* Products that also comply with requirements of the state of California's Department of Public Health (CDPH) "Standard Method for the Test and Evaluation of Volatile Organic Chemical Emissions from Indoor Sources Using Environmental Chambers, Version 1.2 (2017)" (also known as California Section 01350).

* Products that are compliant with the BIFMA X7.1 standard and BIFMA e3 credits 7.6.1, 7.6.2, and 7.6.3.

Finishes Crypton

Pattern Repeat Size N/A

Roll Size 137cm x Approx 45m - Available by the lineal metre

Abrasion 100,000+ Double Rubs (Wyzenbeek)

Fire Rating This product can be treated with a fire retardant that will ensure it meets Australian Standard 1530.3. Contact Baresque for details.

WAYFARER

Fabrics » Woven Fabrics

Lead Time

- 2-weeks (approx.) from Wednesday, subject to stock availability.
 - Additional 1-week for Western Australia.
 - Express delivery is available subject to a surcharge. Contact Baresque for details and pricing.
-

Care Instructions

Mix 5 parts water with 1 part of an enzyme laundry detergent to have a mixture that works well on all stains.

Most liquid spills simply blot off the surface with a dry towel. If a stain remains, follow these simple steps:

1. Remove excess soil, and apply the soap mixture on the stained area
2. Allow solution to remain on stain for 1 minute
3. Blot up the stain with a dry, clean towel, rinse any remaining soap and blot the area again

Repeat these steps if a spot still remains. If agitation is necessary, spray the stained area and work the stain using a soft brush or edge of spoon from outside of spot toward the middle. Blot and rinse to remove any soap.

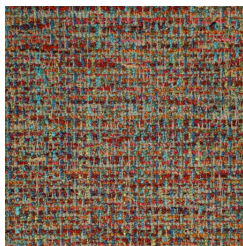
Warranty

2-year warranty. Visit baresque.com.au/warranty for complete details.

Colour & Finish Options



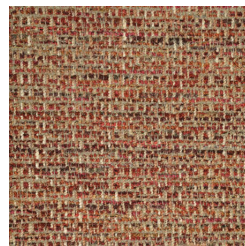
COLOURWAY CARD



1011206 MOSAIC



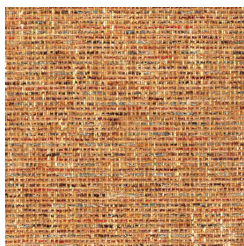
1011207 FRUIT PUNCH



1011208 CRANAPPLE



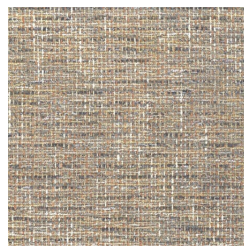
1011209 HERITAGE



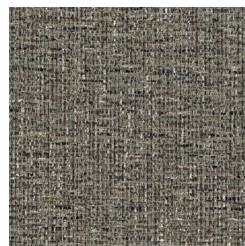
1011210 HARVEST



1011211 GOLDEN
HOUR



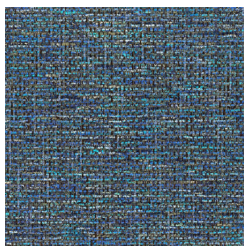
1011212 CHAI



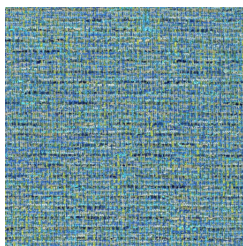
1011213 GRANITE



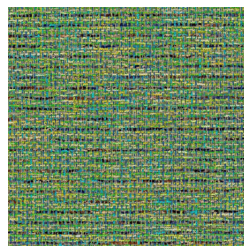
1011214 GALACTIC



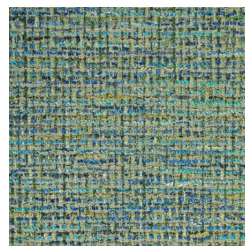
1011215 NAUTICAL



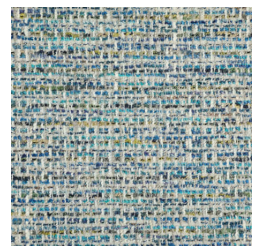
1011216 LAGOON



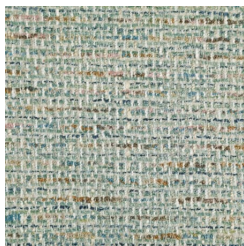
1011217 JUNGLE



1011218 TAHITI



1011219 CAPRI



1011220 SEAGLASS



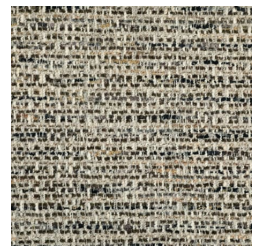
1011221 QUARRY



1011222 CHANTILLY



1011223 ALPINE



1011224 CAF AU LAIT



1011225 MARBLE