

# WAVES ADVENTURE

Fabrics » Woven Fabrics

---



Brand: **Crypton**

Collections: **Adventure**

Applications: **Upholstery**

1300 306 399

[info@baresque.com.au](mailto:info@baresque.com.au)

[baresque.com.au](http://baresque.com.au)

1 of 4



# WAVES ADVENTURE

Fabrics » Woven Fabrics

Waves is a 140cm woven upholstery with an organic distressed wave pattern. Available in 6 colourways. Bleach cleanable, moisture and soil resistant.

✓ **Bleach Cleanable**

✓ **Moisture Barrier**

Description	CRYPTON is a permanent moisture, soil resistance and anti-microbial protection backing. Waves is a 140cm woven upholstery with an organic distressed wave pattern. Available in 6 colourways.
Composition	CRYPTON - 76% polyester, 16% recycled post industrial polyester & 8% recycled post consumer polyester with Crypton Acrylic backing
Pattern Repeat Size	RAILROADED - 33.8cm V / 20cm H
Roll Size	140cm x Approx 45m - 55m - Available by the lineal metre.
Abrasion	100,000+ double rubs Wyzenbeek
Fire Rating	This product can be treated with a fire retardant that will ensure it meets Australian Standard 1530.3. Contact Baresque for details.
Lead Time	<ul style="list-style-type: none"><li>• 2-weeks (approx.) from Wednesday, subject to stock availability.</li><li>• Additional 1-week for Western Australia.</li><li>• Express delivery is available subject to a surcharge. Contact Baresque for details and pricing.</li></ul>

# WAVES ADVENTURE

Fabrics » Woven Fabrics

---

## Care Instructions

Always use a clean, white, soft cloth.

Prepare a mixture of 1/3 Napisan and 2/3 Fab. Combine the mixture with water to make a paste about the consistency of soft margarine i.e. not too runny. Apply using a soft bristle brush. Leave for 10 minutes.

Use a brush and clean, warm water to remove the paste being sure to renew the water so that it remains clean.

Never use stiff bristles or wire brushes, as they may damage the fabric. To prevent soil build-up, frequent vacuuming is recommended.

Using a cloth to pat dry will help eliminate watermarks.

For more difficult stains, dampen a soft white cloth with a solution of household bleach (10% bleach / 90% water). Rub gently. Rinse with a water dampened cloth to remove bleach concentration.

Always test in an inconspicuous area first. If care instructions don't deliver the expected results, cease cleaning method immediately and contact Baresque for assistance.

---

## Warranty

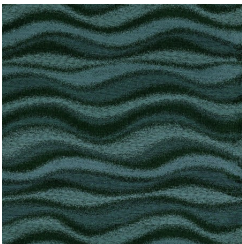
2-year warranty. Visit [baresque.com.au/warranty](https://baresque.com.au/warranty) for complete details.

---

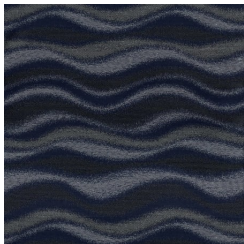
# WAVES ADVENTURE

Fabrics » Woven Fabrics

## Colour & Finish Options



24 DEEP TEAL



3009 MIDNIGHT BLUE



6009 CHINCHILLA



74 FLAME



8006 COCOA



908 CHARCOAL