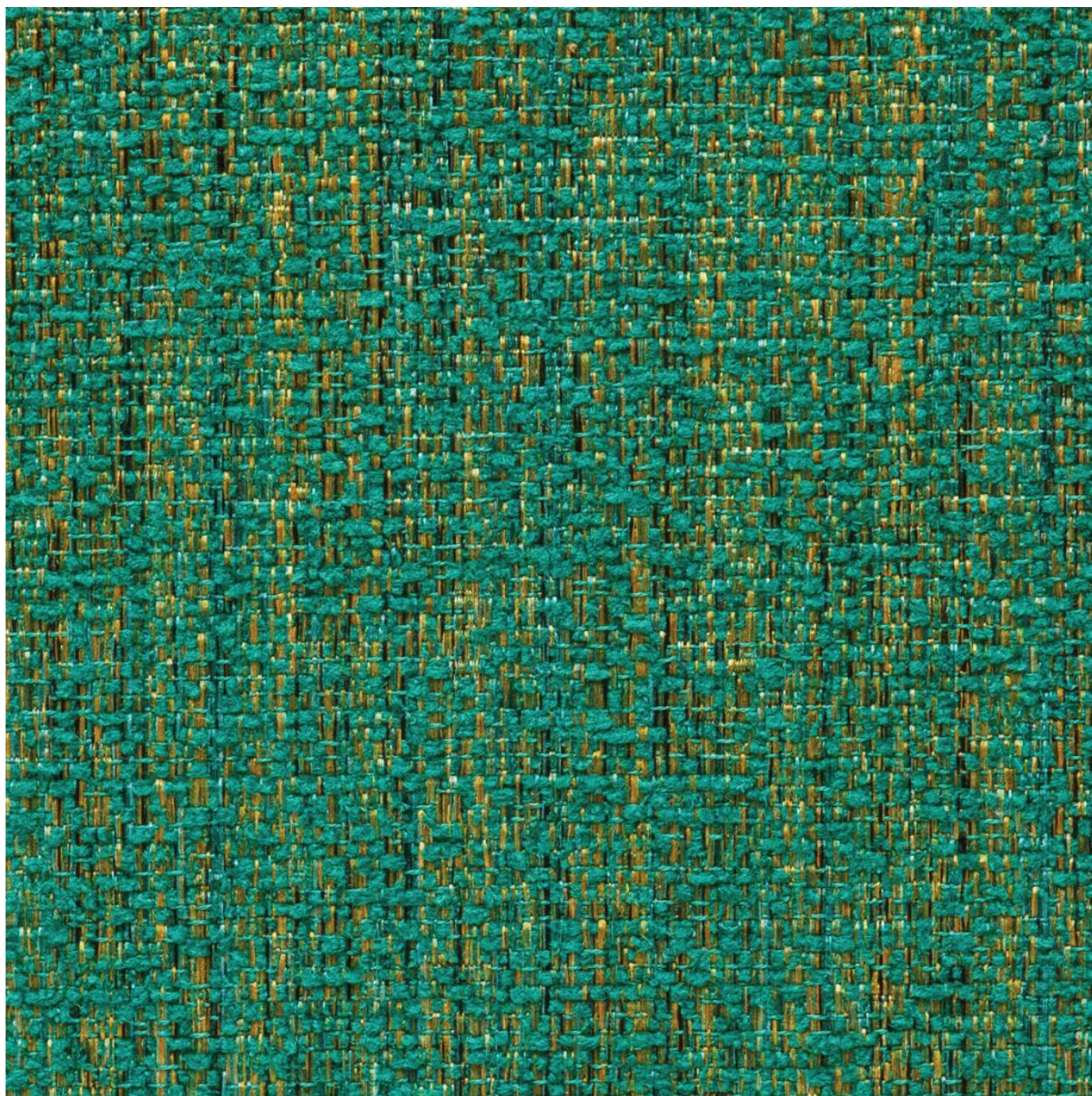


TAGLINE

Fabrics » Woven Fabrics



Brand: **Crypton**

Applications: **Upholstery**

1300 306 399

info@baresque.com.au

baresque.com.au

1 of 4

TAGLINE

Fabrics » Woven Fabrics

Tagline is a 137cm wide woven upholstery that layers a matte chenille yarns atop a luminous multicolored background. available in 14 colourways.

Description	A study in contrast, Tagline layers matte chenille yarns atop a luminous multicolored background. CRYPTON is a permanent moisture, soil resistance and anti-microbial protection backing.
Composition	CRYPTON - 100% polyester
Environmental Info	<p>Greenguard Certifications contributes towards LEED credits for low-emitting furniture and ensures compliance with Business and Institutional Furniture Manufacturers Association (BIFMA) X7.1 standard and BIFMA e3 credit 7.6.1.</p> <p>Greenguard Gold Certification standard includes:</p> <ul style="list-style-type: none">* Health-based criteria for additional chemicals and requires lower total VOC emissions levels to help ensure that products are acceptable for use in environments like schools and healthcare facilities.* Products that also comply with requirements of the state of California's Department of Public Health (CDPH) "Standard Method for the Test and Evaluation of Volatile Organic Chemical Emissions from Indoor Sources Using Environmental Chambers, Version 1.2 (2017)" (also know as California Section 01350).* Products that are compliant with the BIFMA X7.1 standard and BIFMA e3 credits 7.6.1, 7.6.2, and 7.6.3.
Pattern Repeat Size	N/A
Roll Size	137cm x Approx 45m - 55m - Available by the lineal metre
Abrasion	50,000 double rubs (Wyzenbeek)
Fire Rating	<p>Tested in accordance with AS1530.3</p> <p>Spread of Flame Index - 0</p> <p>Smoke Developed Index - 5</p>
Lead Time	<ul style="list-style-type: none">• 2-weeks (approx.) from Wednesday, subject to stock availability.• Additional 1-week for Western Australia.• Express delivery is available subject to a surcharge. Contact Baresque for details and pricing.

TAGLINE

Fabrics » Woven Fabrics

Care Instructions

Mix 5 parts water with 1 part of an enzyme laundry detergent to have a mixture that works well on all stains.

Most liquid spills simply blot off the surface with a dry towel. If a stain remains, follow these simple steps:

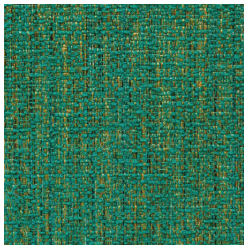
1. Remove excess soil, and apply the soap mixture on the stained area
2. Allow solution to remain on stain for 1 minute
3. Blot up the stain with a dry, clean towel, rinse any remaining soap and blot the area again

Repeat these steps if a spot still remains. If agitation is necessary, spray the stained area and work the stain using a soft brush or edge of spoon from outside of spot toward the middle. Blot and rinse to remove any soap.

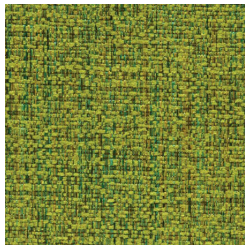
Warranty

2-year warranty. Visit baresque.com.au/warranty for complete details.

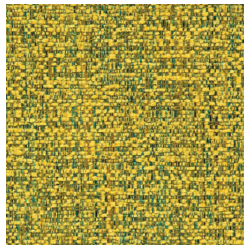
Colour & Finish Options



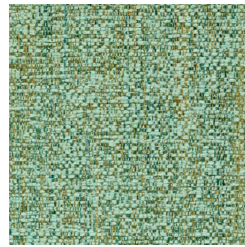
1008654 PEACOCK



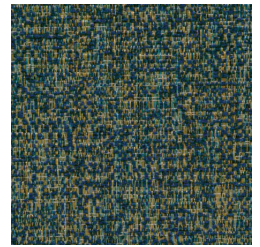
1008655 KIWI



1008656 SUNBURST



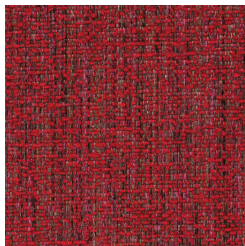
1008657 MINT



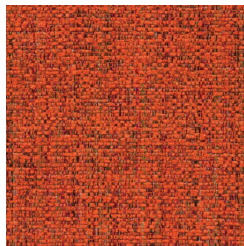
1008658 OPAL



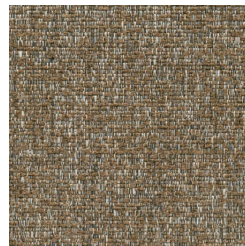
1008659 SUGAR
PLUM



1008660
POMEGRANATE



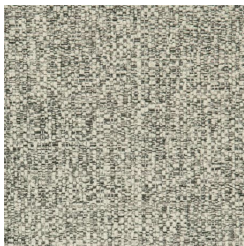
1008661 CHUTNEY



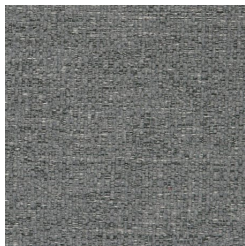
1008662 FAWN



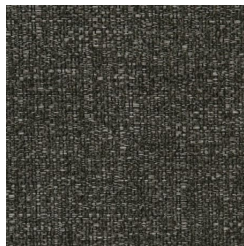
1008663 BISCOTTI



1008664 GRAVEL



1008665 DOVE GREY



1008666 CARBON



1008744 MUSLIN