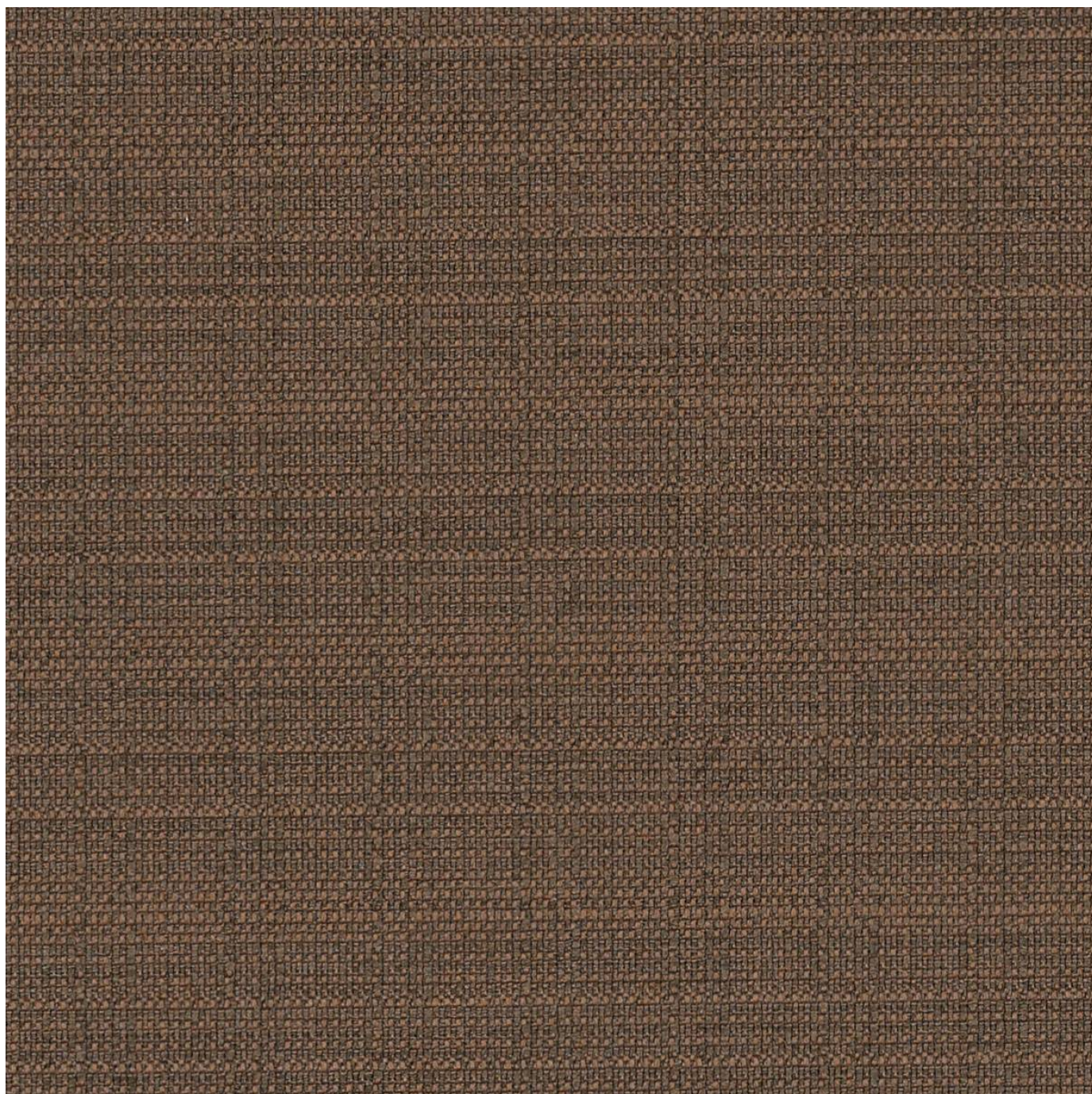


SQUIRE

Fabrics » Woven Fabrics



Brand: **Crypton**

Applications: **Upholstery**

1300 306 399

info@baresque.com.au

baresque.com.au

1 of 4

SQUIRE

Fabrics » Woven Fabrics

Squire is a 137cm wide woven upholstery that's moisture, soil resistant and anti-microbial. available in 15 colourways. Suitable for indoors.

Description	CRYPTON is a permanent moisture, soil resistance and anti-microbial protection backing.
Composition	60% Post Consumer Recycled polyester, 40% polyester with Crypton Green
Environmental Info	<p>Greenguard Certifications contributes towards LEED credits for low-emitting furniture and ensures compliance with Business and Institutional Furniture Manufacturers Association (BIFMA) X7.1 standard and BIFMA e3 credit 7.6.1.</p> <p>Greenguard Gold Certification standard includes:</p> <ul style="list-style-type: none">* Health-based criteria for additional chemicals and requires lower total VOC emissions levels to help ensure that products are acceptable for use in environments like schools and healthcare facilities.* Products that also comply with requirements of the state of California's Department of Public Health (CDPH) "Standard Method for the Test and Evaluation of Volatile Organic Chemical Emissions from Indoor Sources Using Environmental Chambers, Version 1.2 (2017)" (also known as California Section 01350).* Products that are compliant with the BIFMA X7.1 standard and BIFMA e3 credits 7.6.1, 7.6.2, and 7.6.3.
Pattern Repeat Size	N/A
Roll Size	137cm x Approx 50m - Available by the lineal metre
Abrasion	50,000+ double rubs Wyzenbeek
Fire Rating	This product can be treated with a fire retardant that will ensure it meets Australian Standard 1530.3. Contact Baresque for details.
Lead Time	<ul style="list-style-type: none">• 2-weeks (approx.) from Wednesday, subject to stock availability.• Additional 1-week for Western Australia.• Express delivery is available subject to a surcharge. Contact Baresque for details and pricing.

SQUIRE

Fabrics » Woven Fabrics

Care Instructions

Mix 5 parts water with 1 part of an enzyme laundry detergent to have a mixture that works well on all stains.

Most liquid spills simply blot off the surface with a dry towel. If a stain remains, follow these simple steps:

1. Remove excess soil, and apply the soap mixture on the stained area
2. Allow solution to remain on stain for 1 minute
3. Blot up the stain with a dry, clean towel, rinse any remaining soap and blot the area again

Repeat these steps if a spot still remains. If agitation is necessary, spray the stained area and work the stain using a soft brush or edge of spoon from outside of spot toward the middle. Blot and rinse to remove any soap.

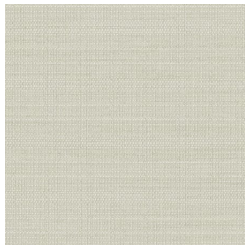
Warranty

2-year warranty. Visit baresque.com.au/warranty for complete details.

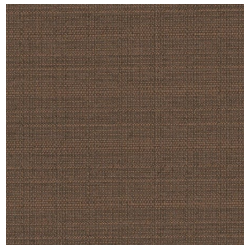
Colour & Finish Options



62656 BASKET



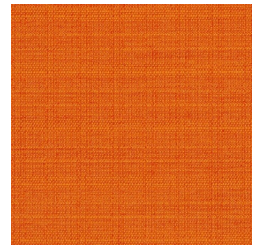
62647 CHINCHILLA



62655 COFFEE



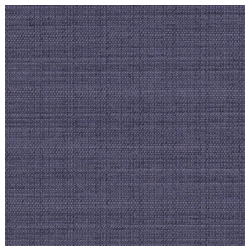
62657 FAIRWAY



62646 FIREWORKS



62654 GRAPE



62658 INK



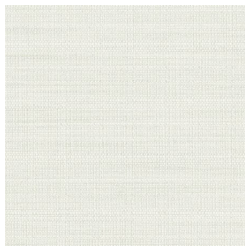
62651 MARSH



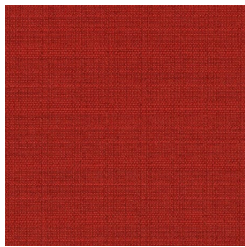
62659 PEAT



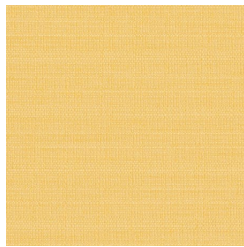
62652 RATTAN



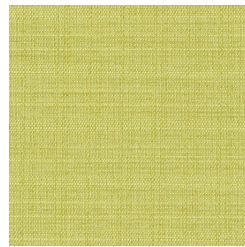
62648 RICE



62650 RUBY



62649 SOLEIL



62653 SPROUT



62645 SURF