

# SPRINT

**Fabrics** » Woven Fabrics

---



Brand: **CF Stinson**

Applications: **Upholstery**

# SPRINT

Fabrics » Woven Fabrics

Sprint is a 137cm wide woven upholstery with a textural weave that's available in 9 colours. Suitable for indoors

Description	Sprint's deeply textural weave is further accentuated by heathered yarns in this versatile plain.
Composition	100% polyester
Environmental Info	<p>Greenguard Certifications contributes towards LEED credits for low-emitting furniture and ensures compliance with Business and Institutional Furniture Manufacturers Association (BIFMA) X7.1 standard and BIFMA e3 credit 7.6.1.</p> <p>Greenguard Gold Certification standard includes:</p> <ul style="list-style-type: none"><li>* Health-based criteria for additional chemicals and requires lower total VOC emissions levels to help ensure that products are acceptable for use in environments like schools and healthcare facilities.</li><li>* Products that also comply with requirements of the state of California's Department of Public Health (CDPH) "Standard Method for the Test and Evaluation of Volatile Organic Chemical Emissions from Indoor Sources Using Environmental Chambers, Version 1.2 (2017)" (also known as California Section 01350).</li><li>* Products that are compliant with the BIFMA X7.1 standard and BIFMA e3 credits 7.6.1, 7.6.2, and 7.6.3.</li></ul>
Pattern Repeat Size	N/A
Roll Size	137cm x Approx 50m - Available by the lineal metre
Abrasion	57,000 double rubs (Wyzenbeek)
Fire Rating	<p>Tested in accordance with AS1530.3</p> <p>Spread of Flame Index - 0</p> <p>Smoke Developed Index - 5</p>
Lead Time	<ul style="list-style-type: none"><li>• 2-weeks (approx.) from Wednesday, subject to stock availability.</li><li>• Additional 1-week for Western Australia.</li><li>• Express delivery is available subject to a surcharge. Contact Baresque for details and pricing.</li></ul>

# SPRINT

Fabrics » Woven Fabrics

---

## Care Instructions

Always use a clean, white, soft cloth.

Clean in situ using a damp cloth and mild detergent. Sponge down afterwards with a clean, damp cloth.

Using a cloth to pat dry will help eliminate watermarks.

Ensure the pile is brushed back to its natural direction.

Upholstered furniture should be regularly vacuumed or brushed with a soft nylon brush to remove grit or dust, which may damage the pile.

Never use stiff bristles or wire brushes, as they may damage the fabric.

Always test in an inconspicuous area first. If care instructions don't deliver the expected results, cease cleaning method immediately and contact Baresque for assistance.

---

## Warranty

2-year warranty. Visit [baresque.com.au/warranty](https://baresque.com.au/warranty) for complete details.

---



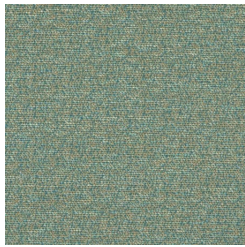
# SPRINT

Fabrics » Woven Fabrics

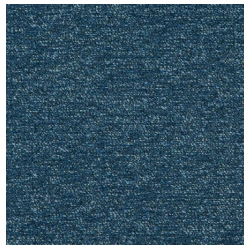
## Colour & Finish Options



COLOURWAY CARD



1010108 SURF



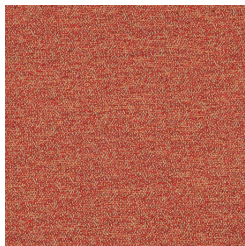
1010109 GALAXY



1010110 THYME



1010111 TOASTED



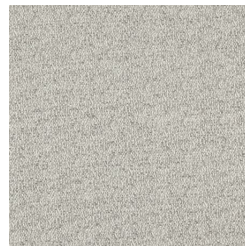
1010112 MOLTEN



1010113 ABYSS



1010114 SATELLITE



1010115 DOVE



1010116 SOYBEAN