

REVIVE TEKLOOM

Fabrics » Woven Fabrics



Brand: **Tekloom**

Applications: **Upholstery**

1300 306 399

info@baresque.com.au

baresque.com.au

1 of 4

REVIVE TEKLOOM

Fabrics » Woven Fabrics

Revive is a 137cm wide woven upholstery with a chevron pattern that's available in 6 colourways. Anti-bacterial, easy to clean and bleach cleanable

- ✓ Bleach Cleanable

✓ Phthalate Free

✓ Anti-Bacterial
- ✓ High Stain Resistance

✓ PVC-Free

✓ Anti-Microbial
- ✓ Moisture Barrier

✓ Ultra Performance

Composition	Tekloom High Performance Fused Textile - Polyester 88%, Graffiti-Free® Tekloom® TPE 12% with an acrylic backing
Environmental Info	<div>PFC free (perfluorinated compounds)</div> <div>PVC free</div> <div>Phthalates free</div> <div>Red List free</div> <div>Anti bacterial</div> <div>FR (flame retardants),</div> <div>Tekloom complies with California Prop 65, California 01350 VOC Standard and Healthier Hospitals Initiative.</div>
Pattern Repeat Size	0.8cm V / 6.2cm H
Roll Size	137cm x Approx 50m - Available by the lineal metre
Abrasion	1,000,000 + double rubs (Wyzenbeek)
Fire Rating	<div>Tested in accordance with AS1530.3</div> <div>Spread of Flame Index - 0</div> <div>Smoke Developed Index - 5</div>
Lead Time	<div>• 2-weeks (approx.) from Wednesday, subject to stock availability.</div> <div>• Additional 1-week for Western Australia.</div> <div>• Express delivery is available subject to a surcharge. Contact Baresque for details and pricing.</div>

REVIVE TEKLOOM

Fabrics » Woven Fabrics

Care Instructions

While Tekloom® is inherently stain resistant, it is important to keep it clean at all times to maintain the original look and feel. Spot cleaning with a clean, soft towel with clean water will remove most of the everyday stains.

Cleaning Code: W/S, Bleach (10:1), Dry Care™

DISINFECTION

Tekloom can be disinfected with a 10:1 bleach dilution of water/bleach.

Apply the solution using a misting spray bottle and gently scrub the affected area with a sponge or soft bristle brush. Allow the mixture to linger for the time specified by the facility.

Avoid soaking the seamed area to prevent the bleach from penetrating thru the protective layer.

Rinse all cleaning agents thoroughly with water and wipe with a soft cloth

Residue left by cleaning agents will degrade and shorten the life and/or affect the product's appearance if not removed.

Always test in an inconspicuous area first.

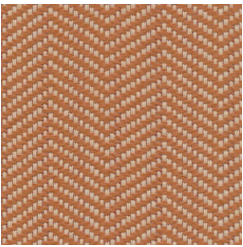
Warranty

2-year warranty. Visit baresque.com.au/warranty for complete details.

REVIVE TEKLOOM

Fabrics » Woven Fabrics

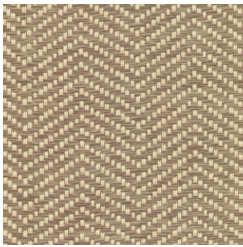
Colour & Finish Options



MANDARIN



PARCHMENT



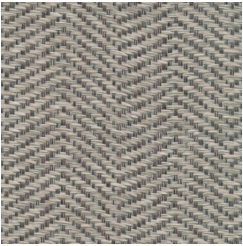
RAFFIA



SAVANNAH



TIDAL



TUNDRA