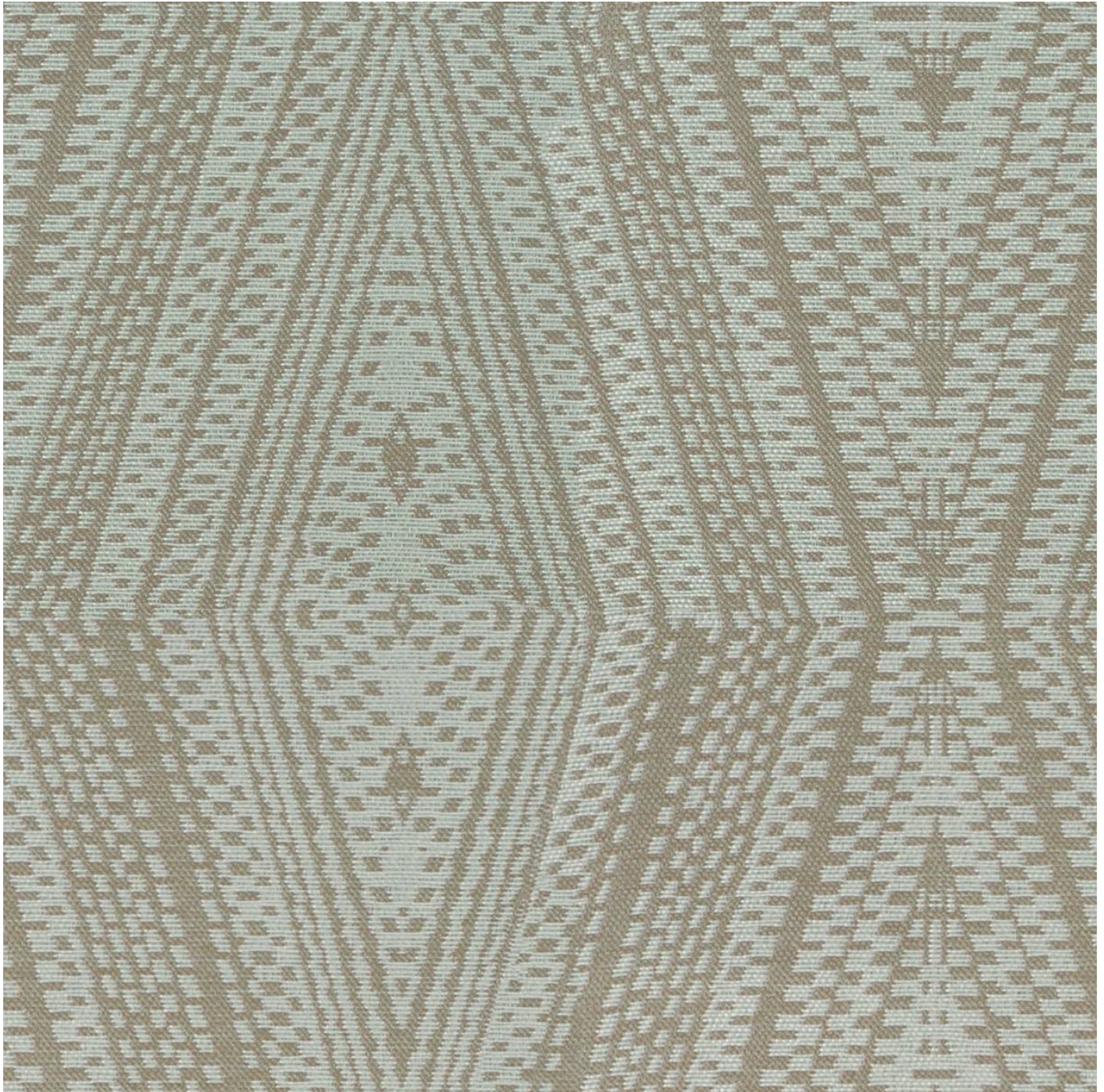


# QUARTET

Fabrics » Woven Fabrics

---



Brand: **Crypton**

Applications: **Upholstery**

1300 306 399

[info@baresque.com.au](mailto:info@baresque.com.au)

[baresque.com.au](http://baresque.com.au)

1 of 5

# QUARTET

Fabrics » Woven Fabrics



quartet-promo-1.jpg



quartet-promo-2.jpg



quartet-promo-3.jpg



quartet-promo-4.jpg



quartet-promo-5.jpg

# QUARTET

Fabrics » Woven Fabrics

Quartet is a 137cm wide woven upholstery with a folk inspired diamond motif that's available in 8 colourways. Water and stain repellent.

✓ **Bleach Cleanable**

✓ **Moisture Barrier**

**Description** Quartet's folk inspired diamond motif is realized in vivid detail for an upscale contemporary aesthetic. Quartet is available in a palette of eight high contrast hues with a crisp, clean point of view. CRYPTON is a permanent moisture, soil resistance and anti-microbial protection backing.

**Composition** CRYPTON - 82% polyester, 18% recycled polyester

**Pattern Repeat Size** 21cm V / 18cm H

**Roll Size** 137cm x Approx 55m - Available by the lineal metre

**Abrasion** 63,000+ Double Rubs (Wyzenbeek)

**Fire Rating** This product can be treated with a fire retardant that will ensure it meets Australian Standard 1530.3. Contact Baresque for details.

**Lead Time**

- 2-weeks (approx.) from Wednesday, subject to stock availability.
- Additional 1-week for Western Australia.
- Express delivery is available subject to a surcharge. Contact Baresque for details and pricing.

# QUARTET

Fabrics » Woven Fabrics

---

## Care Instructions

Always use a clean, white, soft cloth.

Prepare a mixture of 1/3 Napisan and 2/3 Fab. Combine the mixture with water to make a paste about the consistency of soft margarine i.e. not too runny. Apply using a soft bristle brush. Leave for 10 minutes.

Use a brush and clean, warm water to remove the paste being sure to renew the water so that it remains clean.

Never use stiff bristles or wire brushes, as they may damage the fabric. To prevent soil build-up, frequent vacuuming is recommended.

Using a cloth to pat dry will help eliminate watermarks.

For more difficult stains, dampen a soft white cloth with a solution of household bleach (10% bleach / 90% water). Rub gently. Rinse with a water dampened cloth to remove bleach concentration.

Always test in an inconspicuous area first. If care instructions don't deliver the expected results, cease cleaning method immediately and contact Baresque for assistance.

---

## Warranty

2-year warranty. Visit [baresque.com.au/warranty](https://www.baresque.com.au/warranty) for complete details.

---



# QUARTET

Fabrics » Woven Fabrics

## Colour & Finish Options



COLOURWAY CARD



1011327 LILY PAD



1011328 CORAL



1011329 JUTE



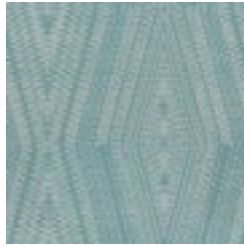
1011330 COCONUT



1011331 STARDUST



1011332 BLUESTONE



1011333 SEABREEZE



1011334 COBALT