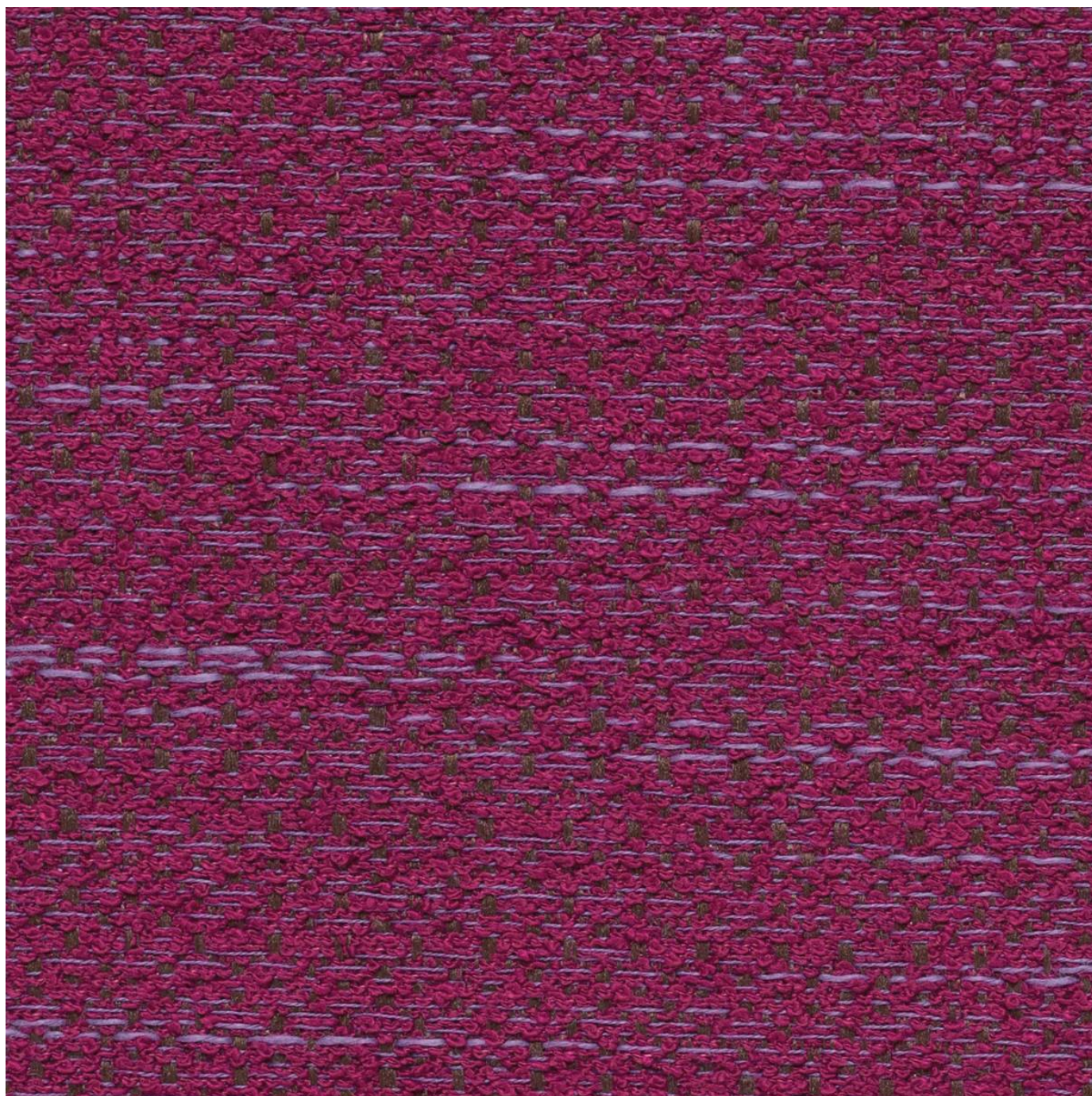


# PIGMENT

Fabrics » Woven Fabrics

---



Brand: **Crypton**

Applications: **Upholstery**

1300 306 399

[info@baresque.com.au](mailto:info@baresque.com.au)

[baresque.com.au](http://baresque.com.au)

1 of 4

# PIGMENT

Fabrics » Woven Fabrics

Pigment is a 137cm wide woven upholstery with a multi-dimensional texture combining intricate boucle yarns that's available in 10 colours.

✓ **Bleach Cleanable**

✓ **Moisture Barrier**

Description	A multi-dimensional texture combines intricate boucle yarns with flecks of metallic in Pigment. Horizontal striae yarns add color and movement across its surface. CRYPTON is a permanent moisture, soil resistance and anti-microbial protection backing.
-------------	--

Composition	CRYPTON - 100% polyester
-------------	--------------------------

Pattern Repeat Size	N/A
---------------------	-----

Roll Size	137cm x Approx 45m - 55m - Available by the lineal metre
-----------	--

Abrasion	63,000 double rubs (Wyzenbeek)
----------	--------------------------------

Fire Rating	Tested in accordance with AS1530.3 Spread of Flame Index - 0 Smoke Developed Index - 5
-------------	--

Lead Time	<ul style="list-style-type: none"><li>• 2-weeks (approx.) from Wednesday, subject to stock availability.</li><li>• Additional 1-week for Western Australia.</li><li>• Express delivery is available subject to a surcharge. Contact Baresque for details and pricing.</li></ul>
-----------	---

# PIGMENT

Fabrics » Woven Fabrics

---

## Care Instructions

Always use a clean, white, soft cloth.

Prepare a mixture of 1/3 Napisan and 2/3 Fab. Combine the mixture with water to make a paste about the consistency of soft margarine i.e. not too runny. Apply using a soft bristle brush. Leave for 10 minutes.

Use a brush and clean, warm water to remove the paste being sure to renew the water so that it remains clean.

Never use stiff bristles or wire brushes, as they may damage the fabric. To prevent soil build-up, frequent vacuuming is recommended.

Using a cloth to pat dry will help eliminate watermarks.

For more difficult stains, dampen a soft white cloth with a solution of household bleach (10% bleach / 90% water). Rub gently. Rinse with a water dampened cloth to remove bleach concentration.

Always test in an inconspicuous area first. If care instructions don't deliver the expected results, cease cleaning method immediately and contact Baresque for assistance.

---

## Warranty

2-year warranty. Visit [baresque.com.au/warranty](https://baresque.com.au/warranty) for complete details.

---



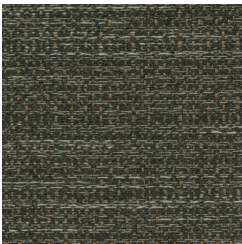
# PIGMENT

Fabrics » Woven Fabrics

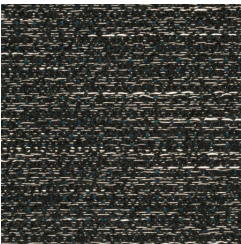
## Colour & Finish Options



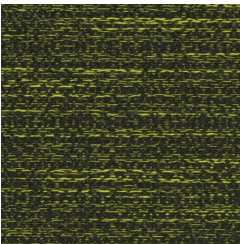
1008725 ICING



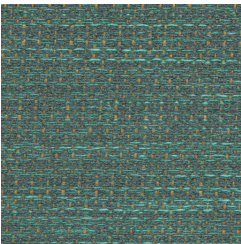
1008716 MERCURY



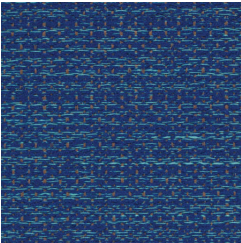
1008717 MIDNIGHT



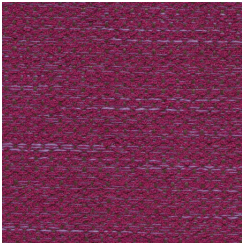
1008718 PALMETTO



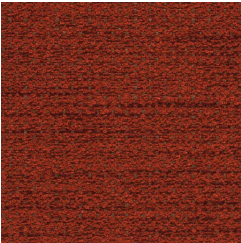
1008719 OPAL



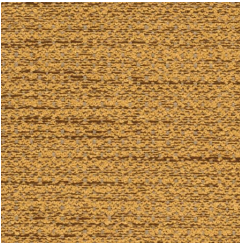
1008720 CERULEAN



1008721 SUGAR PLUM



1008722 MARSALA



1008723 MAPLE



1008724 GILDED