

PENELOPE

Fabrics » Woven Fabrics



Brand: **Crypton**

Applications: **Upholstery**

1300 306 399

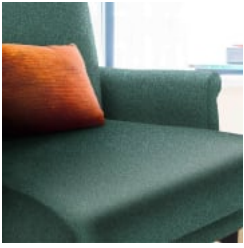
info@baresque.com.au

baresque.com.au

1 of 5

PENELOPE

Fabrics » Woven Fabrics



penelope_promo-1.jpg

PENELOPE

Fabrics » Woven Fabrics

Penelope is a 137cm woven upholstery with an overall pattern that's available in 8 colourways. It's soil and moisture resistant, suitable for indoor

Description	CRYPTON is a permanent moisture, soil resistance and anti-microbial protection backing.
Composition	CRYPTON - 57% polyester, 28% post industrial recycled polyester, 15% post consumer recycled polyester
Environmental Info	<p>Based on life cycle assessment principles, NSF/ANSI 336 employs an easy-to-use point system to evaluate furnishings fabric against established prerequisite requirements, performance criteria and quantifiable metrics in eight areas - Fiber Sourcing, Safety of Material, Water Conservation and Water Quality, Energy, Recycling Practices, Air Quality in Manufacturing, Social Accountability</p> <p>Certification to NSF/ANSI 336 is based on point total achieve a Compliant, Silver, Gold or Platinum level.</p>
Pattern Repeat Size	17.5cm V / 36.6cm H
Roll Size	137cm x Approx 50m - Available by the lineal metre
Abrasion	50,000 + double rubs Wyzenbeek
Fire Rating	This product can be treated with a fire retardant that will ensure it meets Australian Standard 1530.3. Contact Baresque for details.
Lead Time	<ul style="list-style-type: none">• 2-weeks (approx.) from Wednesday, subject to stock availability.• Additional 1-week for Western Australia.• Express delivery is available subject to a surcharge. Contact Baresque for details and pricing.

PENELOPE

Fabrics » Woven Fabrics

Care Instructions

Mix 5 parts water with 1 part of an enzyme laundry detergent to have a mixture that works well on all stains.

Most liquid spills simply blot off the surface with a dry towel. If a stain remains, follow these simple steps:

1. Remove excess soil, and apply the soap mixture on the stained area
2. Allow solution to remain on stain for 1 minute
3. Blot up the stain with a dry, clean towel, rinse any remaining soap and blot the area again

Repeat these steps if a spot still remains. If agitation is necessary, spray the stained area and work the stain using a soft brush or edge of spoon from outside of spot toward the middle. Blot and rinse to remove any soap.

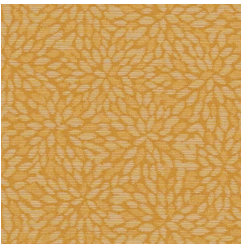
Warranty

2-year warranty. Visit baresque.com.au/warranty for complete details.

PENELOPE

Fabrics » Woven Fabrics

Colour & Finish Options



64795 GINGER



64796 DRIFTWOOD



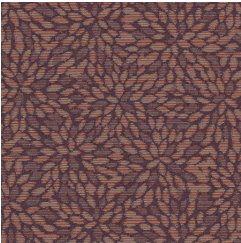
64797 TWILIGHT



64798 STREAM



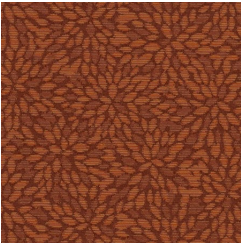
64799 JUNIPER



64800 MULBERRY



64801 CLOVE



64802 AUTUMN