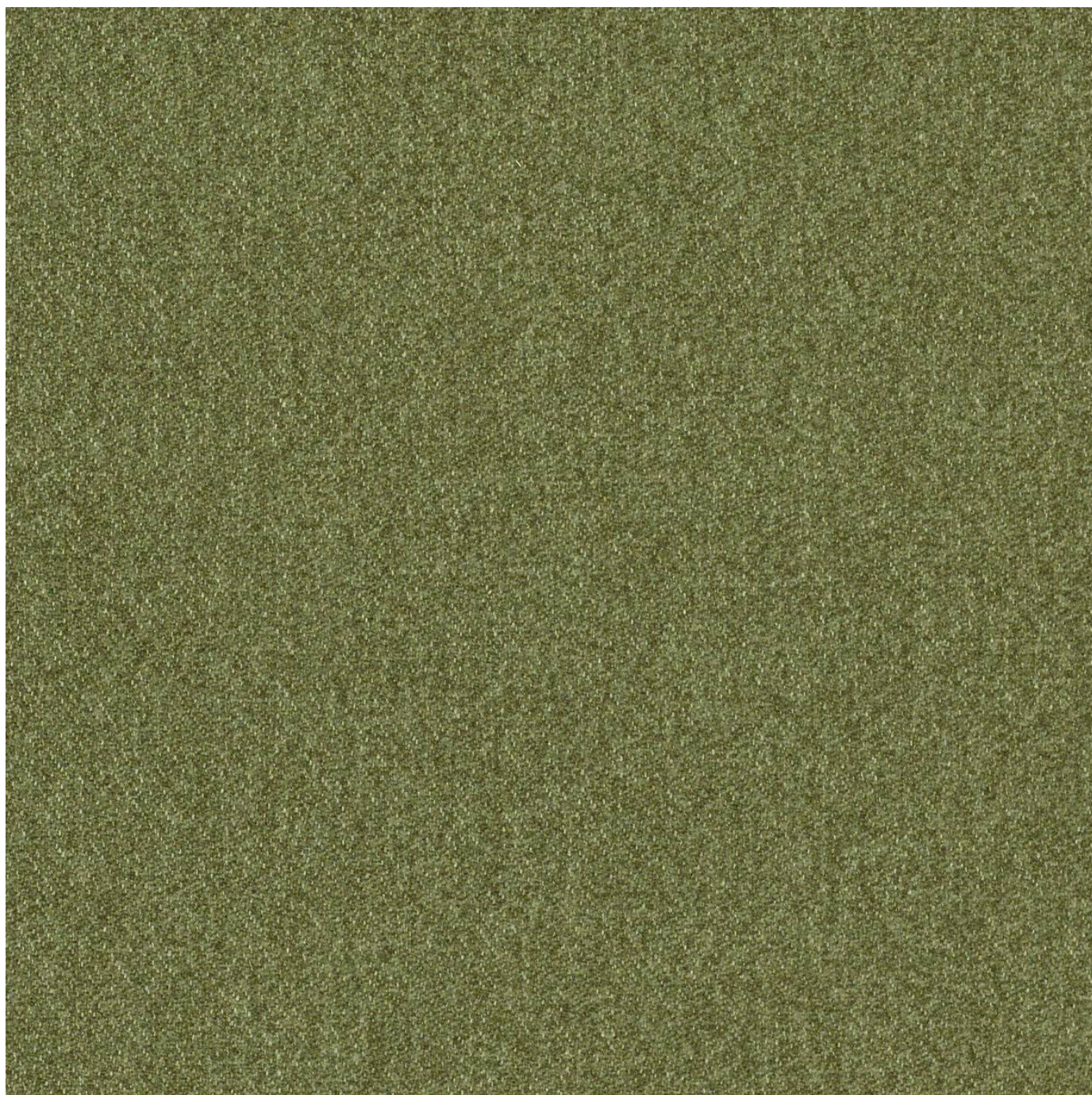


# OUTLANDER

**Fabrics** » Woven Fabrics

---



Brand: **CF Stinson**

Applications: **Upholstery**

# OUTLANDER

Fabrics » Woven Fabrics

Outlander is a 137cm wide woven upholstery that's available in 25 plain colourways. Suitable for indoors.

**Composition** 100% polyester

**Environmental Info**

Greenguard Certifications contributes towards LEED credits for low-emitting furniture and ensures compliance with Business and Institutional Furniture Manufacturers Association (BIFMA) X7.1 standard and BIFMA e3 credit 7.6.1.

Greenguard Gold Certification standard includes:

- \* Health-based criteria for additional chemicals and requires lower total VOC emissions levels to help ensure that products are acceptable for use in environments like schools and healthcare facilities.
- \* Products that also comply with requirements of the state of California's Department of Public Health (CDPH) "Standard Method for the Test and Evaluation of Volatile Organic Chemical Emissions from Indoor Sources Using Environmental Chambers, Version 1.2 (2017)" (also know as California Section 01350).
- \* Products that are compliant with the BIFMA X7.1 standard and BIFMA e3 credits 7.6.1, 7.6.2, and 7.6.3.

**Pattern Repeat Size** N/A

**Roll Size** 137cm x Approx 50m - Available by the lineal metre

**Abrasion** 100,000 double rubs (Wyzenbeek)

**Fire Rating**

Tested in accordance with AS1530.3

Spread of Flame Index - 0

Smoke Developed Index - 5

**Lead Time**

- 2-weeks (approx.) from Wednesday, subject to stock availability.
- Additional 1-week for Western Australia.
- Express delivery is available subject to a surcharge. Contact Baresque for details and pricing.

# OUTLANDER

Fabrics » Woven Fabrics

---

## Care Instructions

Always use a clean, white, soft cloth.

Clean in situ using a damp cloth and mild detergent. Sponge down afterwards with a clean, damp cloth.

Using a cloth to pat dry will help eliminate watermarks.

Ensure the pile is brushed back to its natural direction.

Upholstered furniture should be regularly vacuumed or brushed with a soft nylon brush to remove grit or dust, which may damage the pile.

Never use stiff bristles or wire brushes, as they may damage the fabric.

Always test in an inconspicuous area first. If care instructions don't deliver the expected results, cease cleaning method immediately and contact Baresque for assistance.

---

## Warranty

2-year warranty. Visit [baresque.com.au/warranty](https://baresque.com.au/warranty) for complete details.

---



# OUTLANDER

Fabrics » Woven Fabrics

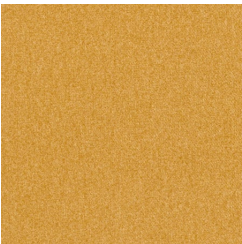
## Colour & Finish Options

### COLOURWAY CARD

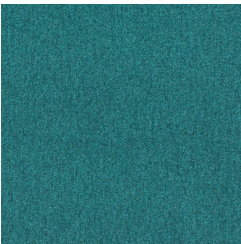
COLOURWAY CARD



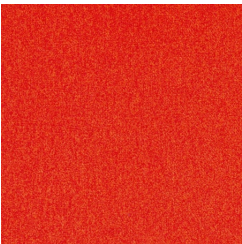
64222 ACORN



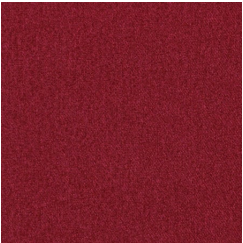
64212 AMBER



64215 AQUAMARINE



64217 BLAZE



64223 CABERNET



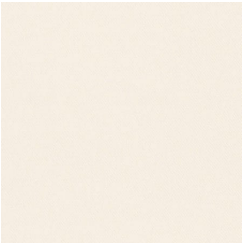
64210 CAMEL



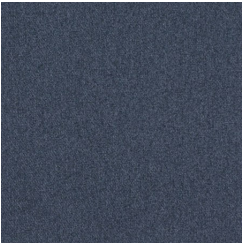
64207 CASHMERE



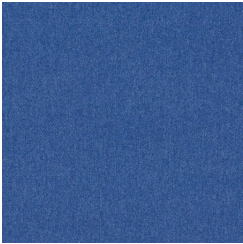
64209 CHARCOAL



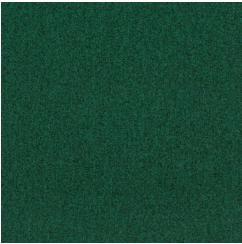
64205 CLOUD



64225 DARK BLUE



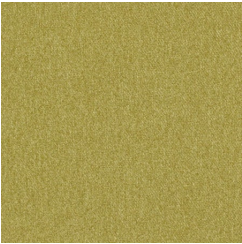
64220 ELECTRIC



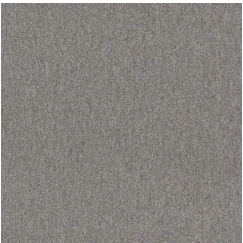
64226 EMERALD



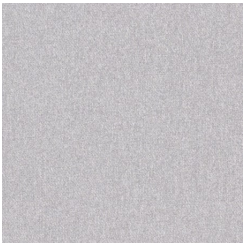
64221 FAIRWAY



64216 FERN



64219 FLANNEL



64214 FOG



64227 FRENCH  
ROAST



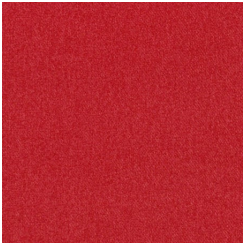
64208 LEMUR



64206 LIMESTONE



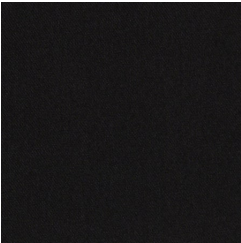
64228 MAJESTY



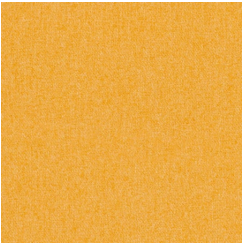
64218 MARS



64224 OTTER



64229 RAVEN

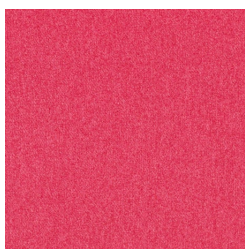


64211 SAFFRON

# OUTLANDER

**Fabrics** » Woven Fabrics

---



64213 TART