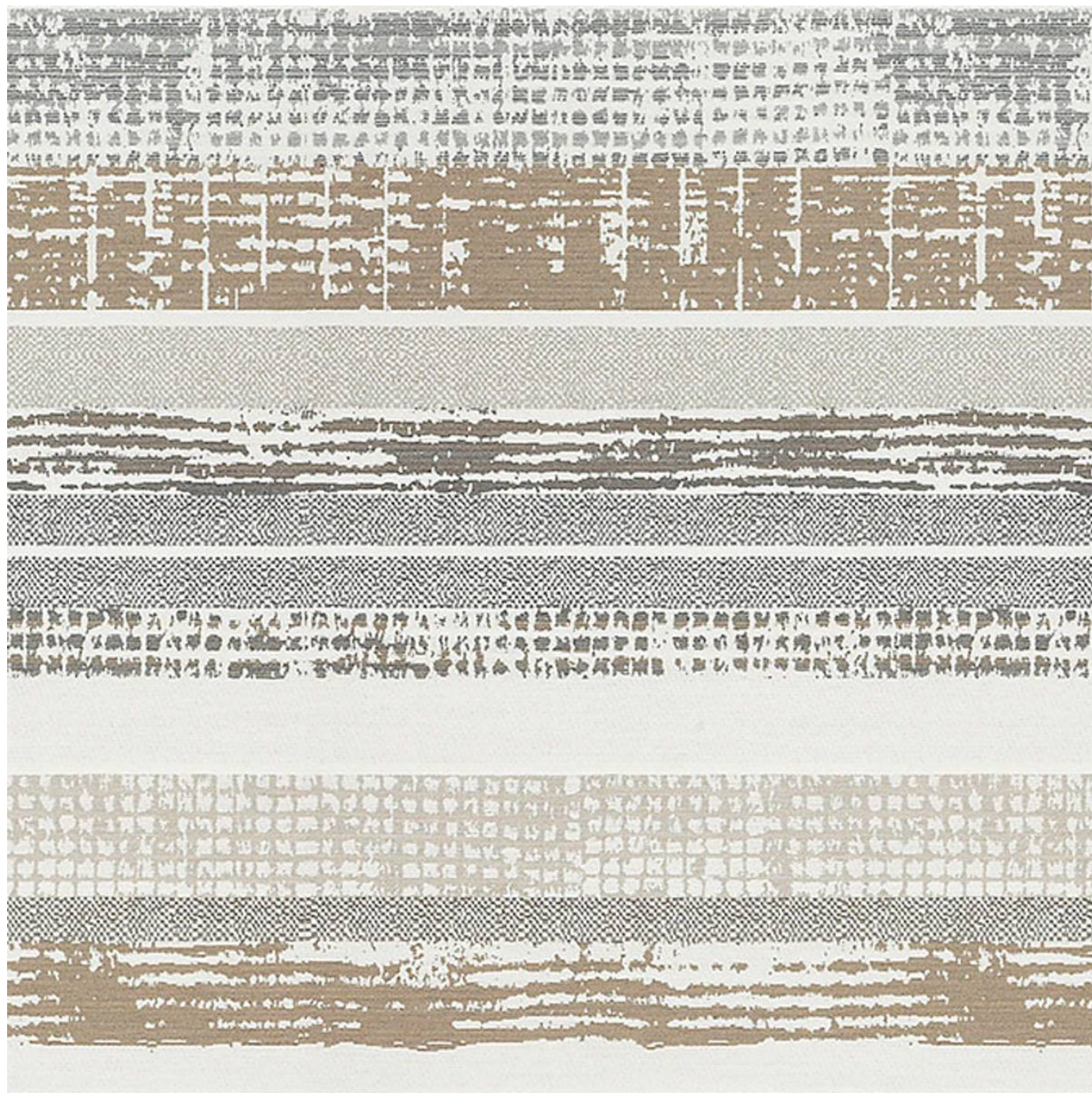


ODYSSEY

Fabrics » Woven Fabrics



Brand: **Sunbrella**

Applications: **Upholstery**

1300 306 399

info@baresque.com.au

baresque.com.au

1 of 5

ODYSSEY

Fabrics » Woven Fabrics



odyssey-promo-2.jpg



odyssey-promo-3.jpg



odyssey-promo-1.jpg

ODYSSEY

Fabrics » Woven Fabrics

Odyssey is a 137cm wide woven upholstery with a mix design of colours and textures available in 8 colourways. Suitable for indoor or outdoors.

- | | | |
|-----------------------------|-----------------------------------|------------------------------|
| ✓ Bleach Cleanable | ✓ Environmentally Friendly | ✓ Extended Warranty |
| ✓ Moisture Repellant | ✓ Outdoor Suitable | ✓ Solution Dyed Yarns |

Description	Founded on the belief that fabrics should be both beautiful and functional, Sunbrella textiles are made with close attention to design detail, and engineered with robust performance characteristics that provide resistance to fading and degradation from sunlight and chemical exposure. The fabric is tactile yet durable, has industry-leading environmental characteristics, is easy to care for and offers long life “wherever it’s used. Each metre of Sunbrella performance fabric is a product of a global support team committed to producing only the most exceptional performance textiles you can buy.
-------------	---

Composition	63% SunbrellaAcrylic, 37% SunbrellaPolyester
-------------	--

Environmental Info	<p>Based on life cycle assessment principles, NSF/ANSI 336 employs an easy-to-use point system to evaluate furnishings fabric against established prerequisite requirements, performance criteria and quantifiable metrics in eight areas - Fiber Sourcing, Safety of Material, Water Conservation and Water Quality, Energy, Recycling Practices, Air Quality in Manufacturing, Social Accountability</p> <p>Certification to NSF/ANSI 336 is based on point total achieve a Compliant, Silver, Gold or Platinum level.</p>
--------------------	--

Pattern Repeat Size	43.5cm V / 36.1cm H
---------------------	---------------------

Roll Size	137cm wide x 27.4m - Available by the lineal metre
-----------	--

Abrasion	81,000 double rubs (ASTM D4157 Wyzenbeek)
----------	---

Fire Rating	<p>Tested in accordance with AS1530.3</p> <p>Spread of Flame Index - 0</p> <p>Smoke Developed Index - 5</p>
-------------	---

Lead Time	<ul style="list-style-type: none">• 2-weeks (approx.) from Wednesday, subject to stock availability.• Additional 1-week for Western Australia.• Express delivery is available subject to a surcharge. Contact Baresque for details and pricing.
-----------	---

ODYSSEY

Fabrics » Woven Fabrics

Care Instructions

One of the best ways to keep fabrics looking good is to brush off dirt before it becomes embedded in the fabrics and wipe up spills or clean soon after a stain occurs. The quicker you clean spills and stains, the easier they can be to remove.

Avoid scrubbing or any other abrasive cleaning method. Never use stiff bristles or wire brushes, as they may damage the fabric.

Wipe material with a clean, soft cloth dampened with a mild solution of liquid detergent and warm water.

Repeat using only clean water, then dry with a lint free cloth or air dry.

Avoid using wax polishes, solvents or concentrated abrasives.

For more difficult stains, dampen a soft white cloth with a solution of household bleach (10% bleach / 90% water). Rub gently. Rinse with a water dampened cloth to remove bleach concentration.

Always test in an inconspicuous area first.

If care instructions don't deliver the expected results, cease cleaning method immediately and contact Baresque for assistance.

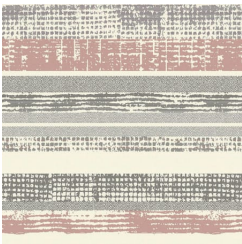
Warranty

2-year warranty. Visit baresque.com.au/warranty for complete details.

Colour & Finish Options

COLOURWAY
CARD

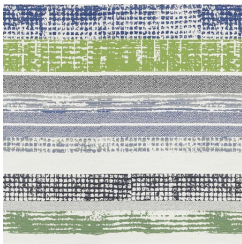
COLOURWAY CARD



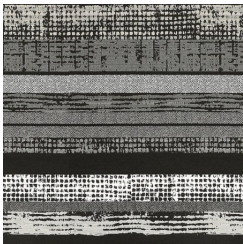
DAYBREAK



DOCKSIDE



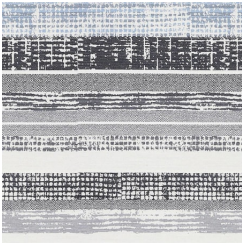
LAKESHORE



NIGHTFALL



SAND DUNE



SEA BREEZE



SUNBEAM



SUNSET