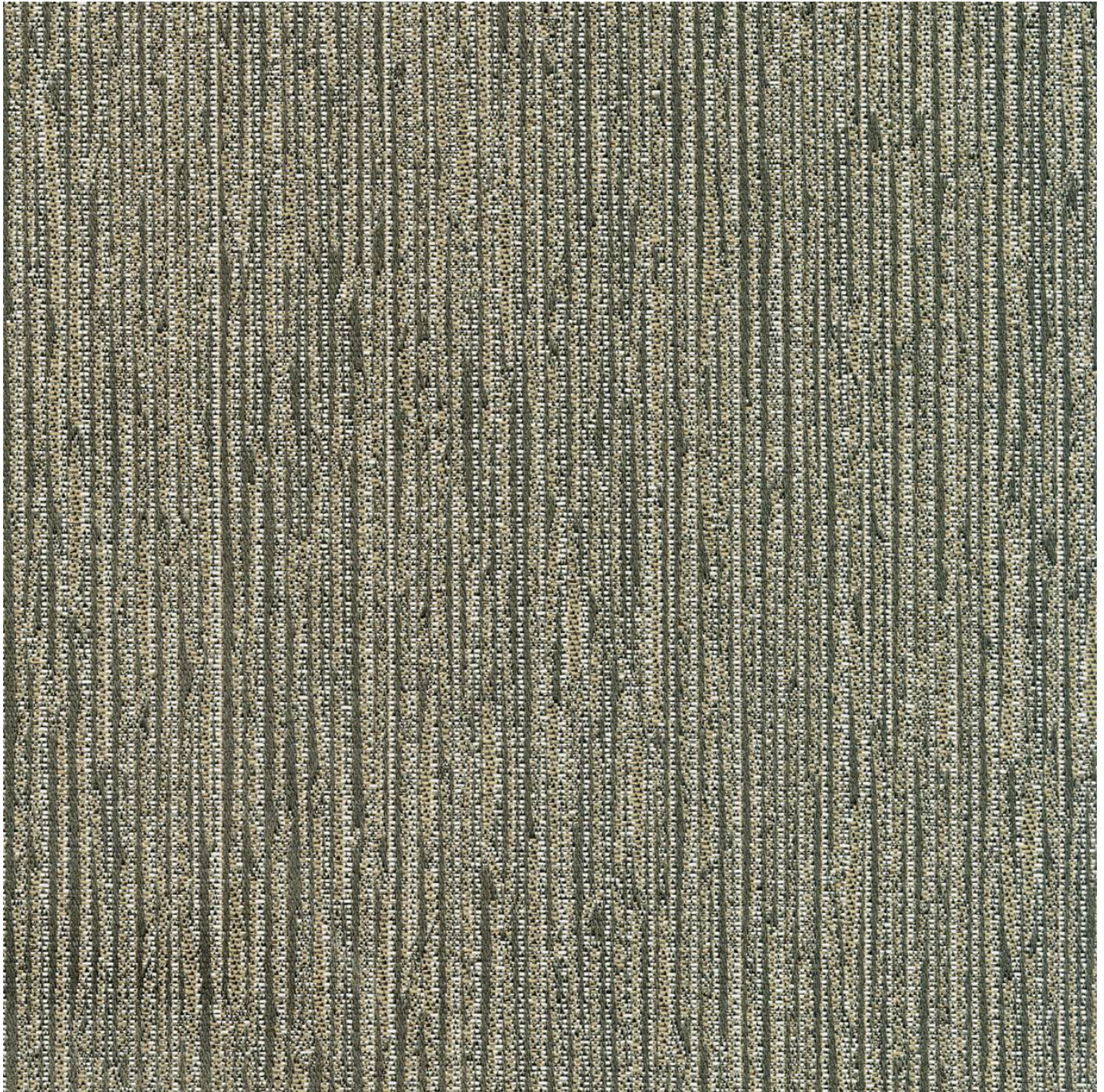


# ODEUM

Fabrics » Woven Fabrics

---



Brand: **Crypton**

Applications: **Upholstery**

1300 306 399

[info@baresque.com.au](mailto:info@baresque.com.au)

[baresque.com.au](http://baresque.com.au)

1 of 5



# ODEUM

**Fabrics** » Woven Fabrics

---



odeum\_promo-1.jpg

# ODEUM

Fabrics » Woven Fabrics

Odeum is a 140cm wide woven upholstery featuring an organic stria texture that's available in 9 colourways. It's moisture and soil resistant.

✓ **Bleach Cleanable**

✓ **Moisture Barrier**

|                     |   |
|---------------------|---|
| Description         | CRYPTON is a permanent moisture, soil resistance and anti-microbial protection backing.   |
| Composition         | CRYPTON - 48% Polyester, 34% Recycled Post Industrial Polyester, 18% Recycled Post Consumer Polyester   |
| Pattern Repeat Size | 56.7cm V / 74.2cm H   |
| Roll Size           | 140cm x Approx 45m - 55m - Available by the lineal metre.   |
| Abrasion            | 100,000+ double rubs Wyzenbeek  |
| Fire Rating         | This product can be treated with a fire retardant that will ensure it meets Australian Standard 1530.3. Contact Baresque for details.   |
| Lead Time           | <ul style="list-style-type: none"><li>• 2-weeks (approx.) from Wednesday, subject to stock availability.</li><li>• Additional 1-week for Western Australia.</li><li>• Express delivery is available subject to a surcharge. Contact Baresque for details and pricing.</li></ul> |

## Care Instructions

Always use a clean, white, soft cloth.

Prepare a mixture of 1/3 Napisan and 2/3 Fab. Combine the mixture with water to make a paste about the consistency of soft margarine i.e. not too runny. Apply using a soft bristle brush. Leave for 10 minutes.

Use a brush and clean, warm water to remove the paste being sure to renew the water so that it remains clean.

Never use stiff bristles or wire brushes, as they may damage the fabric. To prevent soil build-up, frequent vacuuming is recommended.

Using a cloth to pat dry will help eliminate watermarks.

For more difficult stains, dampen a soft white cloth with a solution of household bleach (10% bleach / 90% water). Rub gently. Rinse with a water dampened cloth to remove bleach concentration.

Always test in an inconspicuous area first. If care instructions don't deliver the expected results, cease cleaning method immediately and contact Baresque for assistance.

---

## Warranty

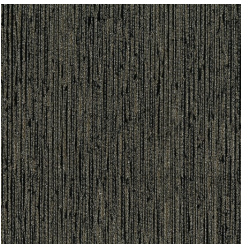
2-year warranty. Visit [baresque.com.au/warranty](https://baresque.com.au/warranty) for complete details.

---

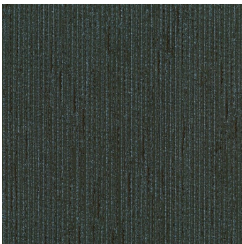
# ODEUM

Fabrics » Woven Fabrics

## Colour & Finish Options



9009 BLACK TIE



37 BLUE MOON



61 CHAMPAGNE



6009 CHINCHILLA



44 FLAME



205 LIMELIGHT



81 LUGGAGE



308 MOODY BLUE



91 PLATINUM