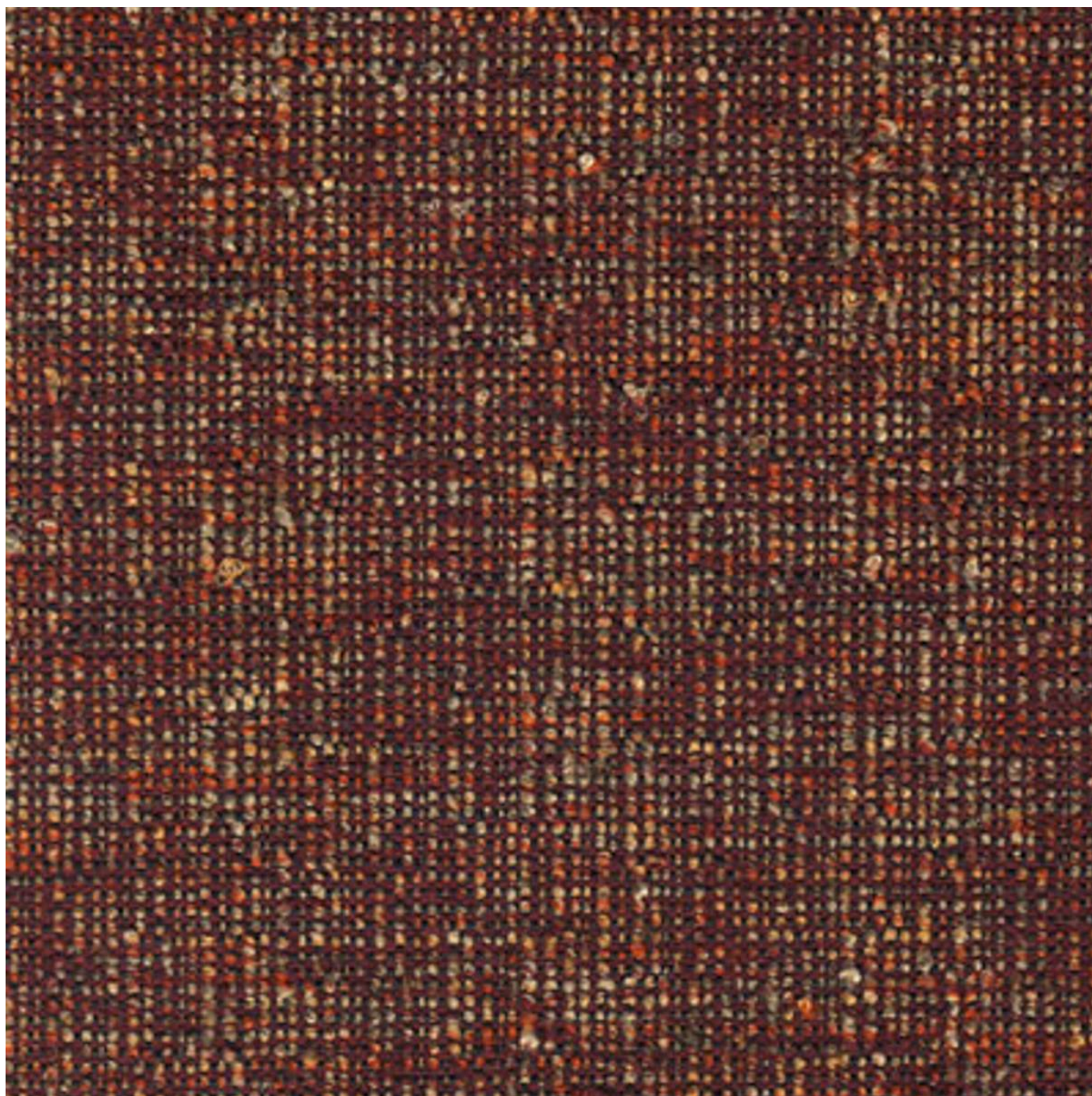


# OASIS IN SEASON

Fabrics » Woven Fabrics

---



Brand: **United Fabrics**

Collections: **In Season**

Applications: **Upholstery**

1300 306 399

[info@baresque.com.au](mailto:info@baresque.com.au)

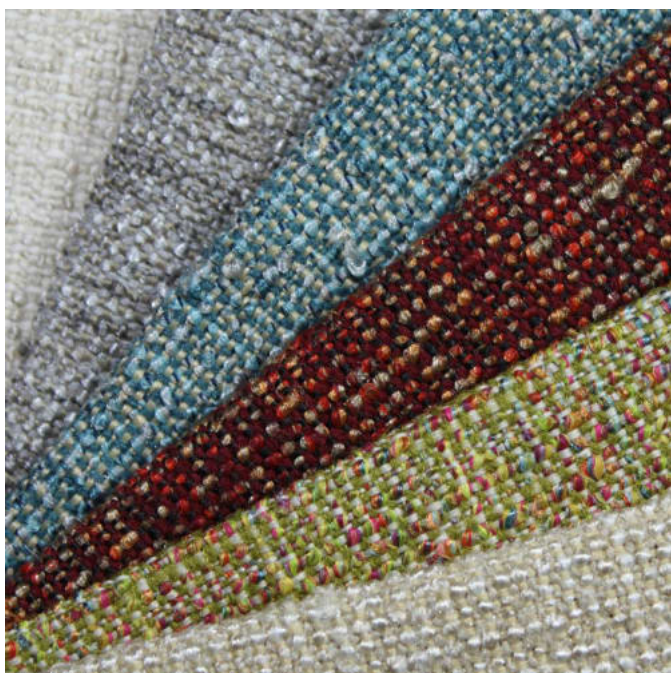
[baresque.com.au](http://baresque.com.au)

1 of 4

# OASIS IN SEASON

**Fabrics** » Woven Fabrics

---



oasis-promo-1.jpg



# OASIS IN SEASON

Fabrics » Woven Fabrics

Oasis is a 137cm wide woven upholstery that's suitable for indoors or outdoors. available in 8 plain colours.

✓ **Bleach Cleanable**

✓ **Outdoor Suitable**

**Composition** 79% Solspun Olefin / 21% polyester. Three (3) year yarn guarantee for colorfastness and against degradation due to exposure to light and the elements.

**Pattern Repeat Size** N/A

**Roll Size** 137cm x 45.7m - Available by the lineal metre

**Abrasion** 100,000+ double rubs Wyzenbeek

**Fire Rating** This product can be treated with a fire retardant that will ensure it meets Australian Standard 1530.3. Contact Baresque for details.

**Lead Time**

- 2-weeks (approx.) from Wednesday, subject to stock availability.
- Additional 1-week for Western Australia.
- Express delivery is available subject to a surcharge. Contact Baresque for details and pricing.

**Care Instructions**

Always use a clean, white, soft cloth.

Clean in situ using a damp cloth and mild detergent. Sponge down afterwards with a clean, damp cloth.

Using a cloth to pat dry will help eliminate watermarks.

Ensure the pile is brushed back to its natural direction.

Upholstered furniture should be regularly vacuumed or brushed with a soft nylon brush to remove grit or dust, which may damage the pile.

Never use stiff bristles or wire brushes, as they may damage the fabric.

Always test in an inconspicuous area first. If care instructions don't deliver the expected results, cease cleaning method immediately and contact Baresque for assistance.

**Warranty** 2-year warranty. Visit [baresque.com.au/warranty](https://baresque.com.au/warranty) for complete details.

# OASIS IN SEASON

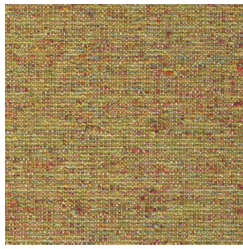
Fabrics » Woven Fabrics

---

## Colour & Finish Options



13 BISQUE



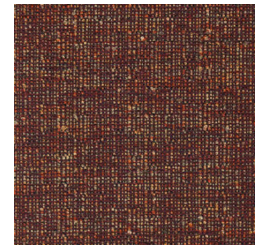
20 CONFETTI



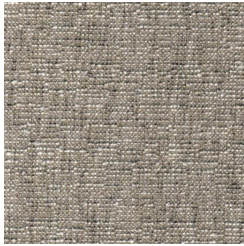
35 JUTE



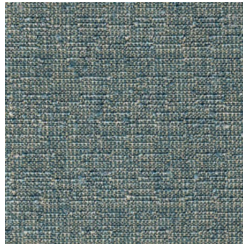
56 RAFFIA



77 SANGRIA



81 SHALE



85 SPA



98 WHITEWASH