

NIMBLE

Fabrics » Woven Fabrics



Brand: **Crypton**

Applications: **Upholstery**

NIMBLE

Fabrics » Woven Fabrics



nimble_promo-1.jpg

NIMBLE

Fabrics » Woven Fabrics

Nimble is a 137cm wide woven upholstery with a interlocking pattern that's available in 9 colourways. Suitable for indoors

✓ **Bleach Cleanable**

✓ **Moisture Barrier**

Description	CRYPTON is a permanent moisture, soil resistance and anti-microbial protection backing.
Composition	CRYPTON - 57% polyester, 28% post industrial recycled polyester, 15% post consumer recycled polyester
Environmental Info	<p>Greenguard Certifications contributes towards LEED credits for low-emitting furniture and ensures compliance with Business and Institutional Furniture Manufacturers Association (BIFMA) X7.1 standard and BIFMA e3 credit 7.6.1.</p> <p>Greenguard Gold Certification standard includes:</p> <ul style="list-style-type: none">* Health-based criteria for additional chemicals and requires lower total VOC emissions levels to help ensure that products are acceptable for use in environments like schools and healthcare facilities.* Products that also comply with requirements of the state of California's Department of Public Health (CDPH) "Standard Method for the Test and Evaluation of Volatile Organic Chemical Emissions from Indoor Sources Using Environmental Chambers, Version 1.2 (2017)" (also know as California Section 01350).* Products that are compliant with the BIFMA X7.1 standard and BIFMA e3 credits 7.6.1, 7.6.2, and 7.6.3.
Pattern Repeat Size	38cm H x 18.7cm V
Roll Size	137cm x Approx 50m - Available by the lineal metre
Abrasion	75,000 double rubs (Wyzenbeek)
Fire Rating	This product can be treated with a fire retardant that will ensure it meets Australian Standard 1530.3. Contact Baresque for details.
Lead Time	<ul style="list-style-type: none">• 2-weeks (approx.) from Wednesday, subject to stock availability.• Additional 1-week for Western Australia.• Express delivery is available subject to a surcharge. Contact Baresque for details and pricing.

NIMBLE

Fabrics » Woven Fabrics

Care Instructions

Always use a clean, white, soft cloth.

Prepare a mixture of 1/3 Napisan and 2/3 Fab. Combine the mixture with water to make a paste about the consistency of soft margarine i.e. not too runny. Apply using a soft bristle brush. Leave for 10 minutes.

Use a brush and clean, warm water to remove the paste being sure to renew the water so that it remains clean.

Never use stiff bristles or wire brushes, as they may damage the fabric. To prevent soil build-up, frequent vacuuming is recommended.

Using a cloth to pat dry will help eliminate watermarks.

For more difficult stains, dampen a soft white cloth with a solution of household bleach (10% bleach / 90% water). Rub gently. Rinse with a water dampened cloth to remove bleach concentration.

Always test in an inconspicuous area first. If care instructions don't deliver the expected results, cease cleaning method immediately and contact Baresque for assistance.

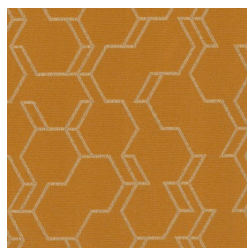
Warranty

2-year warranty. Visit baresque.com.au/warranty for complete details.

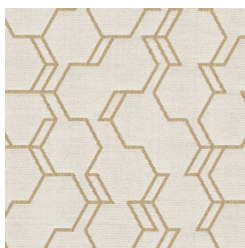
NIMBLE

Fabrics » Woven Fabrics

Colour & Finish Options



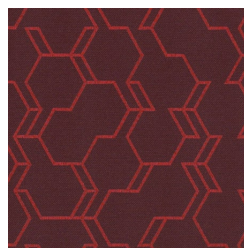
64370 BUTTERNUT



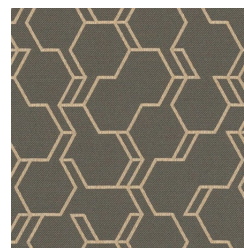
64371 IVORY



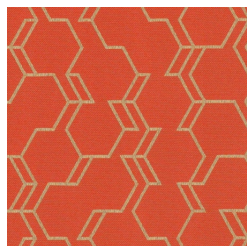
64365 LEMON DROP



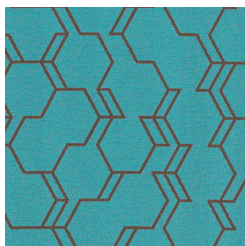
64368 MULBERRY



64364 PALLADIUM



64372 SUNSET



64366 TAHITI



64369 TOMATILLO



64367 WEDGEWOOD
BLUE