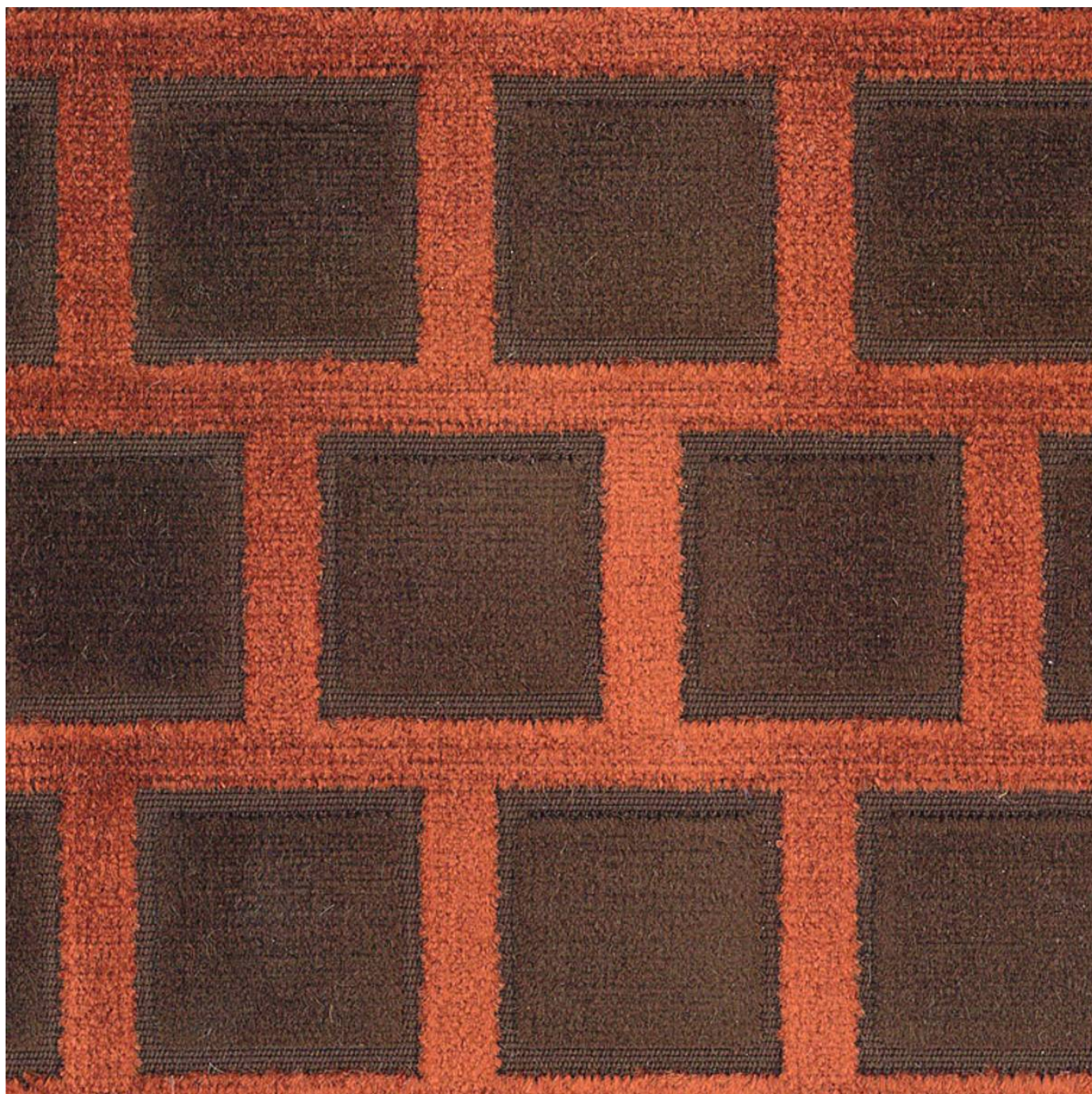


MONROE

Fabrics » Woven Fabrics



Brand: **Panaz**

Applications: **Upholstery**

1300 306 399

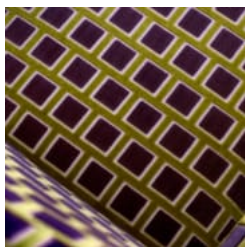
info@baresque.com.au

baresque.com.au

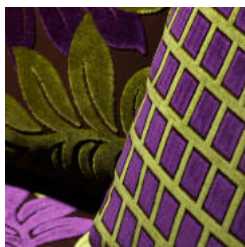
1 of 4

MONROE

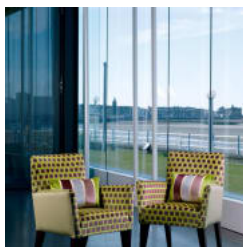
Fabrics » Woven Fabrics



monroe-promo-1.jpg



monroe-promo-4.jpg



monroe_promo-6.jpg

MONROE

Fabrics » Woven Fabrics

Monroe is a 135cm wide woven upholstery with a checker board pattern that's available in 10 colours.

Composition 44% acrylic, 22% polyester, 12% viscose, 22% kanecaron

Pattern Repeat Size 9cm

Roll Size 135cm x N/A - Available by the lineal metre. MINIMUM ORDER 4 METRES.

Abrasion 40,000 + double rubs Martindale

Fire Rating This product can be treated with a fire retardant that will ensure it meets Australian Standard 1530.3. Contact Baresque for details.

Lead Time

- 2-weeks (approx.) from Wednesday, subject to stock availability.
- Additional 1-week for Western Australia.
- Express delivery is available subject to a surcharge. Contact Baresque for details and pricing.

Care Instructions

Always use a clean, white, soft cloth.

Clean in situ using a damp cloth and mild detergent. Sponge down afterwards with a clean, damp cloth.

Using a cloth to pat dry will help eliminate watermarks.

Ensure the pile is brushed back to its natural direction.

Upholstered furniture should be regularly vacuumed or brushed with a soft nylon brush to remove grit or dust, which may damage the pile.

Never use stiff bristles or wire brushes, as they may damage the fabric.

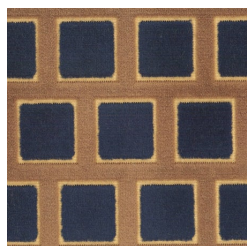
Always test in an inconspicuous area first. If care instructions don't deliver the expected results, cease cleaning method immediately and contact Baresque for assistance.

Warranty 2-year warranty. Visit baresque.com.au/warranty for complete details.

MONROE

Fabrics » Woven Fabrics

Colour & Finish Options



191 INDIGO FAWN



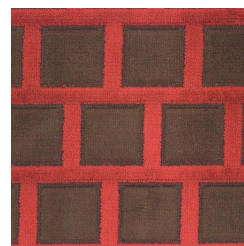
264 LIME PURPLE



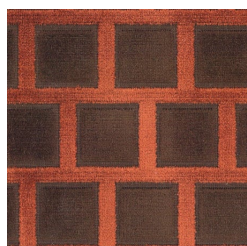
275 LIME MINK



300 GOLD



400 RED



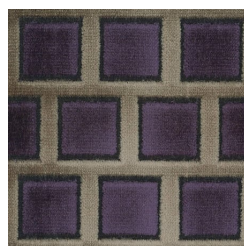
411 SPICE



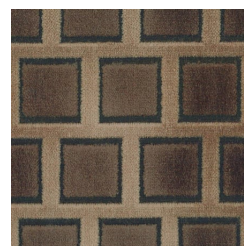
439 RASPBERRY



713 MINK DUCK EGG



745 MINK PURPLE



791 MOCHA