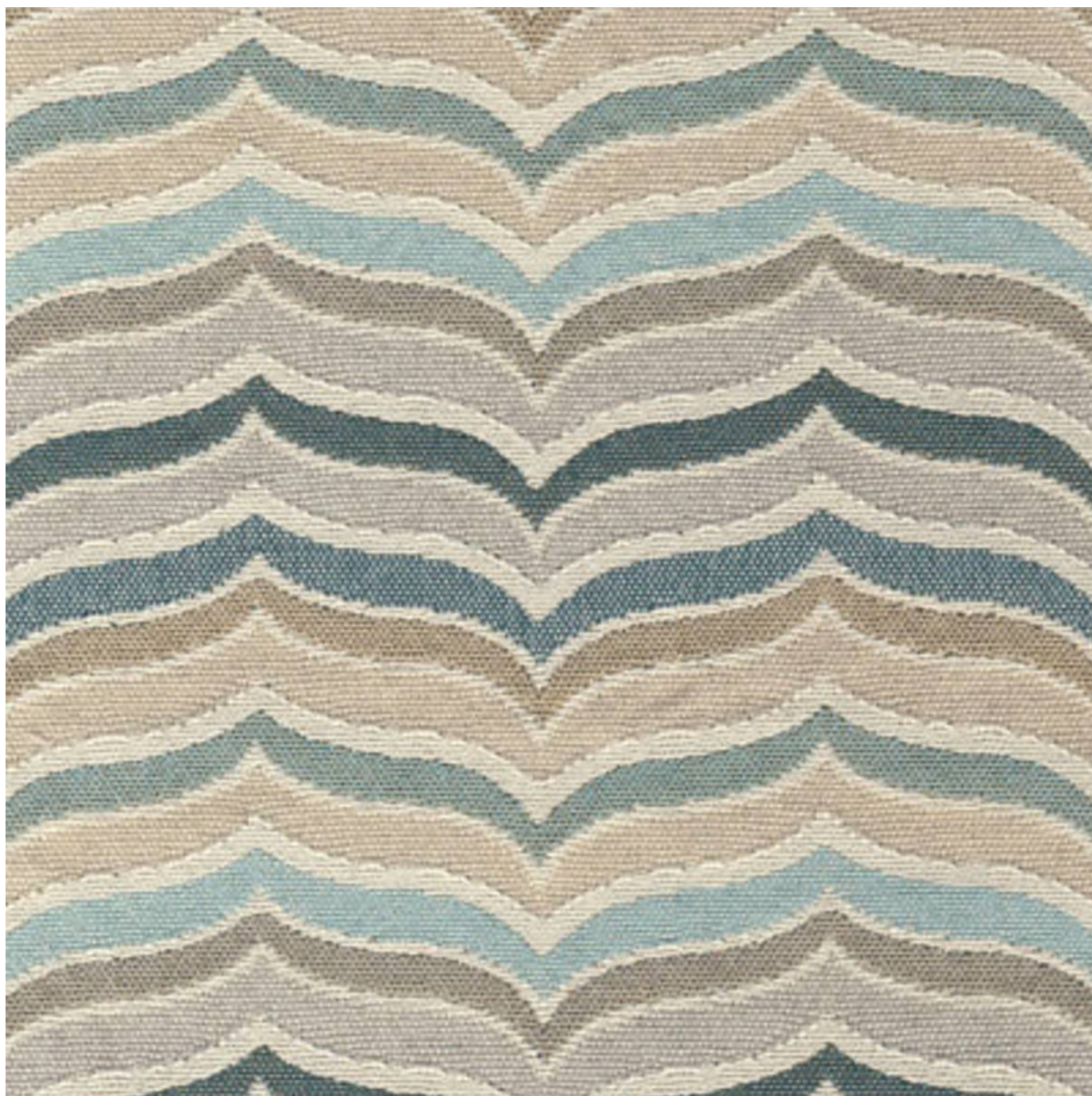


MIRAGE IN SEASON

Fabrics » Woven Fabrics



Brand: **United Fabrics**

Collections: **In Season**

Applications: **Upholstery**

1300 306 399

info@baresque.com.au

baresque.com.au

1 of 4

MIRAGE IN SEASON

Fabrics » Woven Fabrics



mirage-in-season-promo-1.jpg

MIRAGE IN SEASON

Fabrics » Woven Fabrics

Mirage is a 137cm wide woven upholstery with a colourful wave pattern that's available in 3 colourways. Suitable for indoor or outdoor.

✓ **Bleach Cleanable**

✓ **Outdoor Suitable**

Composition 75% Solspun Olefin / 25% polyester. Three (3) year yarn guarantee for colorfastness and against degradation due to exposure to light and the elements.

Pattern Repeat Size 9.4cm V / 8.8cm H

Roll Size 137cm x 45.7m - Available by the lineal metre

Abrasion 60,000+ double rubs Wyzenbeek

Fire Rating This product can be treated with a fire retardant that will ensure it meets Australian Standard 1530.3. Contact Baresque for details.

Lead Time

- 2-weeks (approx.) from Wednesday, subject to stock availability.
- Additional 1-week for Western Australia.
- Express delivery is available subject to a surcharge. Contact Baresque for details and pricing.

Care Instructions

Always use a clean, white, soft cloth.

Clean in situ using a damp cloth and mild detergent. Sponge down afterwards with a clean, damp cloth.

Using a cloth to pat dry will help eliminate watermarks.

Ensure the pile is brushed back to its natural direction.

Upholstered furniture should be regularly vacuumed or brushed with a soft nylon brush to remove grit or dust, which may damage the pile.

Never use stiff bristles or wire brushes, as they may damage the fabric.

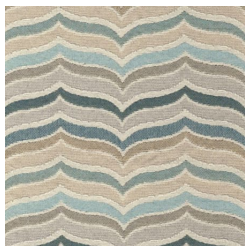
Always test in an inconspicuous area first. If care instructions don't deliver the expected results, cease cleaning method immediately and contact Baresque for assistance.

Warranty 2-year warranty. Visit baresque.com.au/warranty for complete details.

MIRAGE IN SEASON

Fabrics » Woven Fabrics

Colour & Finish Options



12 BREEZE



19 CHAMELEON



71 SPROUT