

# MILANO 1007

Fabrics » Woven Fabrics

---



Brand: **Crypton**

Applications: **Upholstery**

1300 306 399

[info@baresque.com.au](mailto:info@baresque.com.au)

[baresque.com.au](http://baresque.com.au)

1 of 4

# MILANO 1007

Fabrics » Woven Fabrics

Milano is a 137cm wide woven upholstery with a chunky texture and a tonal contrast between its yards that's available in 16 colourways. For indoors.

- ✓ Bleach Cleanable
- ✓ Moisture Barrier

Description	Milano's chunky texture has a sophisticated tonal contrast between its yards. A large selection of neutrals and contemporary colorways add to it's versatility. CRYPTON is a permanent moisture, soil resistance and anti-microbial protection backing.
Composition	CRYPTON - 100% polyester
Pattern Repeat Size	N/A
Roll Size	137cm x Approx 45m - 55m - Available by the lineal metre
Abrasion	50,000 double rubs (Wyzenbeek)
Fire Rating	Tested in accordance with AS1530.3 Spread of Flame Index - 0 Smoke Developed Index - 5
Lead Time	<ul style="list-style-type: none"><li>• 2-weeks (approx.) from Wednesday, subject to stock availability.</li><li>• Additional 1-week for Western Australia.</li><li>• Express delivery is available subject to a surcharge. Contact Baresque for details and pricing.</li></ul>



# MILANO 1007

Fabrics » Woven Fabrics

---

## Care Instructions

Always use a clean, white, soft cloth.

Prepare a mixture of 1/3 Napisan and 2/3 Fab. Combine the mixture with water to make a paste about the consistency of soft margarine i.e. not too runny. Apply using a soft bristle brush. Leave for 10 minutes.

Use a brush and clean, warm water to remove the paste being sure to renew the water so that it remains clean.

Never use stiff bristles or wire brushes, as they may damage the fabric. To prevent soil build-up, frequent vacuuming is recommended.

Using a cloth to pat dry will help eliminate watermarks.

For more difficult stains, dampen a soft white cloth with a solution of household bleach (10% bleach / 90% water). Rub gently. Rinse with a water dampened cloth to remove bleach concentration.

Always test in an inconspicuous area first. If care instructions don't deliver the expected results, cease cleaning method immediately and contact Baresque for assistance.

---

## Warranty

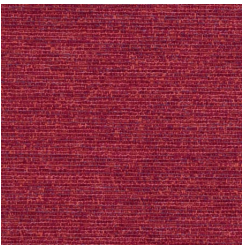
2-year warranty. Visit [baresque.com.au/warranty](https://baresque.com.au/warranty) for complete details.

---

# MILANO 1007

Fabrics » Woven Fabrics

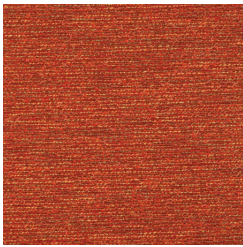
## Colour & Finish Options



1007738 HIBISCUS



1007739 FLAMENCO



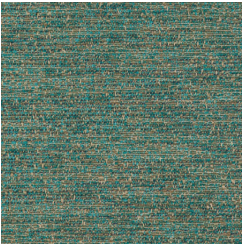
1007740 SAFFRON



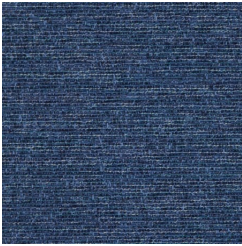
1007741 MARIGOLD



1007742 FENNEL



1007743 AMALFI



1007744 INDIGO



1007745 DEPTH



1007746 MUDSLIDE



1007747 PORTOBELLO



1007748 BLACKOUT



1007749 GRAPHITE



1007750 IRISH CREAM



1007751 FOGHORN



1007752 OATMEAL



1007753 GRAVEL