

MAZE

Fabrics » Woven Fabrics



Brand: **Crypton**

Applications: **Upholstery**

1300 306 399

info@baresque.com.au

baresque.com.au

1 of 5

MAZE

Fabrics » Woven Fabrics



maze-promo1.jpg



maze-promo2.jpg



maze-promo5.jpg



maze-promo11.jpg

MAZE

Fabrics » Woven Fabrics

Maze is a 137cm wide woven upholstery with a modern mashup of corduroy and chevron that's available in 15 colors. Suitable for indoor.

Description	A modern mashup of corduroy and chevron reaches new heights with amplified texture and scale. Maze's palette of fifteen contemporary shades will have you struggling with which colour to choose. CRYPTON is a permanent moisture, soil resistance and anti-microbial protection backing.
Composition	CRYPTON - 100% polyester
Environmental Info	<p>Greenguard Certifications contributes towards LEED credits for low-emitting furniture and ensures compliance with Business and Institutional Furniture Manufacturers Association (BIFMA) X7.1 standard and BIFMA e3 credit 7.6.1.</p> <p>Greenguard Gold Certification standard includes:</p> <ul style="list-style-type: none">* Health-based criteria for additional chemicals and requires lower total VOC emissions levels to help ensure that products are acceptable for use in environments like schools and healthcare facilities.* Products that also comply with requirements of the state of California's Department of Public Health (CDPH) "Standard Method for the Test and Evaluation of Volatile Organic Chemical Emissions from Indoor Sources Using Environmental Chambers, Version 1.2 (2017)" (also know as California Section 01350).* Products that are compliant with the BIFMA X7.1 standard and BIFMA e3 credits 7.6.1, 7.6.2, and 7.6.3.
Pattern Repeat Size	6.7cm V / 17.8cm H
Roll Size	137cm x Approx 45m - Available by the lineal metre
Abrasion	50,000+ Double Rubs (Wyzenbeek)
Fire Rating	This product can be treated with a fire retardant that will ensure it meets Australian Standard 1530.3. Contact Baresque for details.
Lead Time	<ul style="list-style-type: none">• 2-weeks (approx.) from Wednesday, subject to stock availability.• Additional 1-week for Western Australia.• Express delivery is available subject to a surcharge. Contact Baresque for details and pricing.

MAZE

Fabrics » Woven Fabrics

Care Instructions

Always use a clean, white, soft cloth.

Prepare a mixture of 1/3 Napisan and 2/3 Fab. Combine the mixture with water to make a paste about the consistency of soft margarine i.e. not too runny. Apply using a soft bristle brush. Leave for 10 minutes.

Use a brush and clean, warm water to remove the paste being sure to renew the water so that it remains clean.

Never use stiff bristles or wire brushes, as they may damage the fabric. To prevent soil build-up, frequent vacuuming is recommended.

Using a cloth to pat dry will help eliminate watermarks.

For more difficult stains, dampen a soft white cloth with a solution of household bleach (10% bleach / 90% water). Rub gently. Rinse with a water dampened cloth to remove bleach concentration.

Always test in an inconspicuous area first. If care instructions don't deliver the expected results, cease cleaning method immediately and contact Baresque for assistance.

Warranty

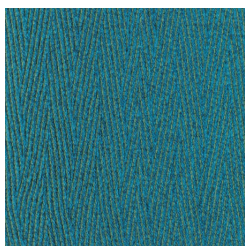
2-year warranty. Visit [baresque.com.au/warranty](https://www.baresque.com.au/warranty) for complete details.

MAZE

Fabrics » Woven Fabrics

Colour & Finish Options

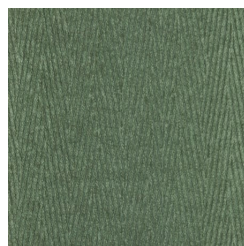
COLOURWAY CARD



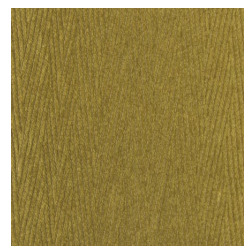
10011192 AQUARIUS



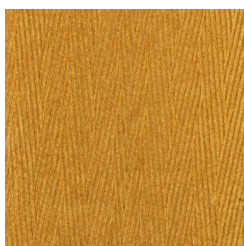
10011193 TAHITIAN



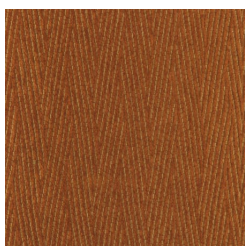
10011194 SEAFOAM



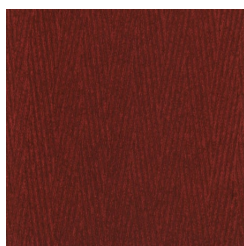
10011195 ARTICHOKE



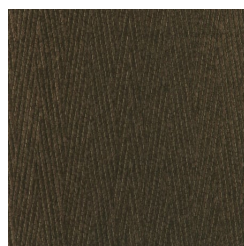
10011196
HONEYCOMB



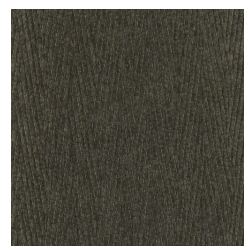
10011197 AMBER



10011198 SCARLET



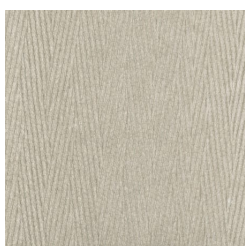
10011199 ACORN



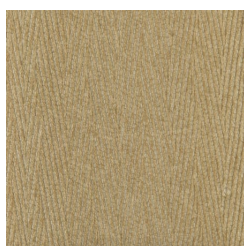
10011200 IRON ORE



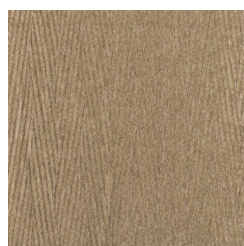
10011201 SILVER
LINING



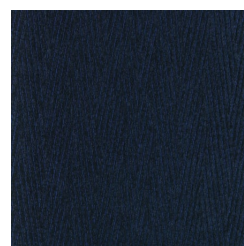
10011203 PORCELAIN



10011204 MUSLIN



10011205 MISO



1011191 SAPPHIRE