

LINEN XOREL

Wallcoverings » Commercial Wallcoverings



Brand: **Xorel**

Applications: **Walls, Upholstery, Panels**

1300 306 399

info@baresque.com.au

baresque.com.au

1 of 5

LINEN XOREL

Wallcoverings » Commercial Wallcoverings

A versatile product with a linen-look Xorel design, natural stitch texture, and timeless appeal.

- ✓ Bleach Cleanable

✓ High Stain Resistance

✓ Solution Dyed Yarns
- ✓ Environmentally Friendly

✓ Phthalate Free

✓ Ultra Performance
- ✓ Extended Warranty

✓ PVC-Free

Description	Let Linen bring natural elegance to your interiors. A top seller in the Xorel collection, Linen’s movement of stitches creates a linen-like texture through a modern material. Classic and versatile, Linen is bleach cleanable and 100% PVC-free. The Xorel construction is supplied unbacked as standard but can be paired with a variety of backings to suit different applications, from panels and upholstered walls to upholstery and wallcovering. Celebrated for durability and sustainability, Xorel offers exceptional cleanability, stain resistance, and long-term performance, even with bleach cleaning, making Linen a truly versatile and low-maintenance textile.
How to Specify	<div>1. Colour</div> <div>2. Backing - Available Unbacked or with X-Protect Wall, X-Protect Sit or Acrylic backings.</div> <div>Check out the Xorel Backings guide on the DOWNLOAD tab.</div>
Composition	100% IFR Xorel®
Environmental Info	<div>Xorel's high performance does not come at an environmental cost as it achieves high standards for sustainability.</div> <div>All testing/certifying is done by third party independent organizations including:- Scientific Certification Systems (SCS) – Indoor Air Quality (GOLD)- Vincotte – Biobased Content (LEVELS 3/4)- USDA Biobased – Meeting Government Biobased Regulations (PREFERRED)- Cradle to Cradle Institute – Full Lifecycle Assessment (GOLD)- NSF – FACTS certification (NSF 336)</div> <div>Xorel products can also help a project achieve multiple credits under LEED for commercial interiors:Material Sourcing (Rapidly Renewable Content)Indoor Air Quality (SCS Indoor Advantage Gold)Material Optimization (Cradle to Cradle Gold)Material Transparency (Healthy Product Declaration)</div>
Pattern Repeat Size	N/A

LINEN XOREL

Wallcoverings » Commercial Wallcoverings

Roll Size	Unbacked - 142cm
	X-Protect Wall - 132cm
	X-Protect Sit - 137cm
	Acrylic Backed - 137cm x Approx 60m - available by the lineal metre.
	MINIMUM ORDER for X-Protect Sit - 5 lineal metres
	MINIMUM ORDER for Acrylic Backed - 15 lineal metres
Weight	Wallcovering: 399.2g/m ²
	Upholstered Walls: 231.4g/m ²
	Upholstery: 232.8g/m ²
Abrasion	1,000,000 + double rubs Wyzenbeek
Fire Rating	As a wallcovering - Tested in accordance with AS/NZS 3837 and AS 5637.1:2015 for the purposes of Group Number Classification as specified in the NCC Volume One Specification C1.10 Clause 4
	Classification - Group 1
	Specific Extinction - Less than 250 m ² /kg
	As a fabric - Tested in accordance with AS1530.3
	Spread of Flame Index - 0
	Smoke Developed Index - 4
Lead Time	• 5-weeks (approx) from Wednesday subject to stock availability.
	• Additional 1-week for Western Australia.
	• Unbacked 2-3 weeks.
	• Express delivery is available subject to a surcharge. Contact Baresque for details and pricing
Suggested Installation	As a wallcovering - trim selvedge and butt join.
	Download the Installation Instructions for details.
	Baresque recommends and supply Roman brand adhesives and primers.

LINEN XOREL

Wallcoverings » Commercial Wallcoverings

Care Instructions

Xorel yarns are non-absorbent; dust and stains cannot penetrate them.

Regular maintenance will keep the fabric looking new for many years. Periodic vacuuming will remove dust that may settle between the yarns.

Most stains that dry between the yarns or on the surface can be eliminated by wiping the fabric with a cloth moistened with hot tap water. Some stains may require additional treatment. These stains can be cleaned with a variety of water or solvent based cleaners.

When using solvent based cleaners on paperbacked Xorel fabric, test on a small area first. Residue from these cleaners must be removed with hot water and a clean sponge. After cleaning, towel dry.

Hardened solids can be removed with stiff brush or a sharp-edged instrument without damaging the fabric. However, the brush or sharp instrument should not be used close to seams.

Hospital grade disinfectant cleaners can be safely used on Xorel fabrics. Always follow the directions for the specific brand being used as contact times may vary depending on the product. Diluted bleach solution (up to 40%) can also be used on Xorel for disinfecting purposes.

Always test in an inconspicuous area first. If care instructions don't deliver the expected results, cease cleaning method immediately and contact Baresque for assistance.

Warranty

7-year warranty. Visit baresque.com.au/warranty for complete details.

Additional Comments

Xorel is a multi-tasking material being equally suited as a direct applied wallcovering, wrapped panel material or as an upholstery solution. In addition, it is notable for its versatility in a wide range of projects; wherever both beauty and performance are required.

X Protect Wall prevents stains and other substances from reaching the foam or paper backing.

X Protect Sit increases cushion protection and enhances Xorels superior performance attributes.

With X Protect, Xorel is 100% moisture repellent.

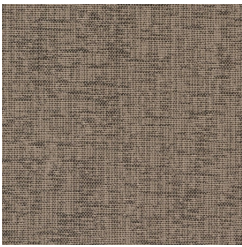
LINEN XOREL

Wallcoverings » Commercial Wallcoverings

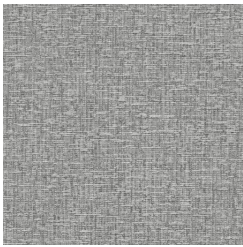
Colour & Finish Options



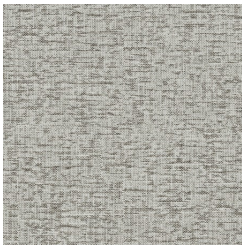
COLOURWAY CARD



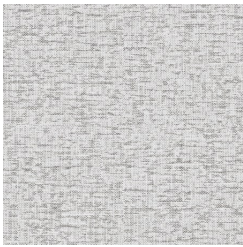
6291 1



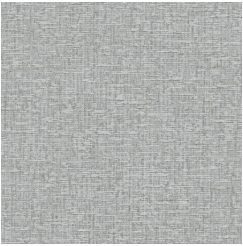
6291 2



6291 3



6291 4



6291 5



6291 6



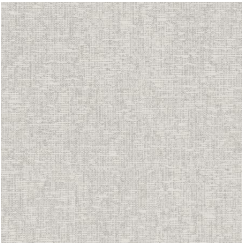
6291 7



6291 8



6291 9



6291 10



6291 11



6291 12