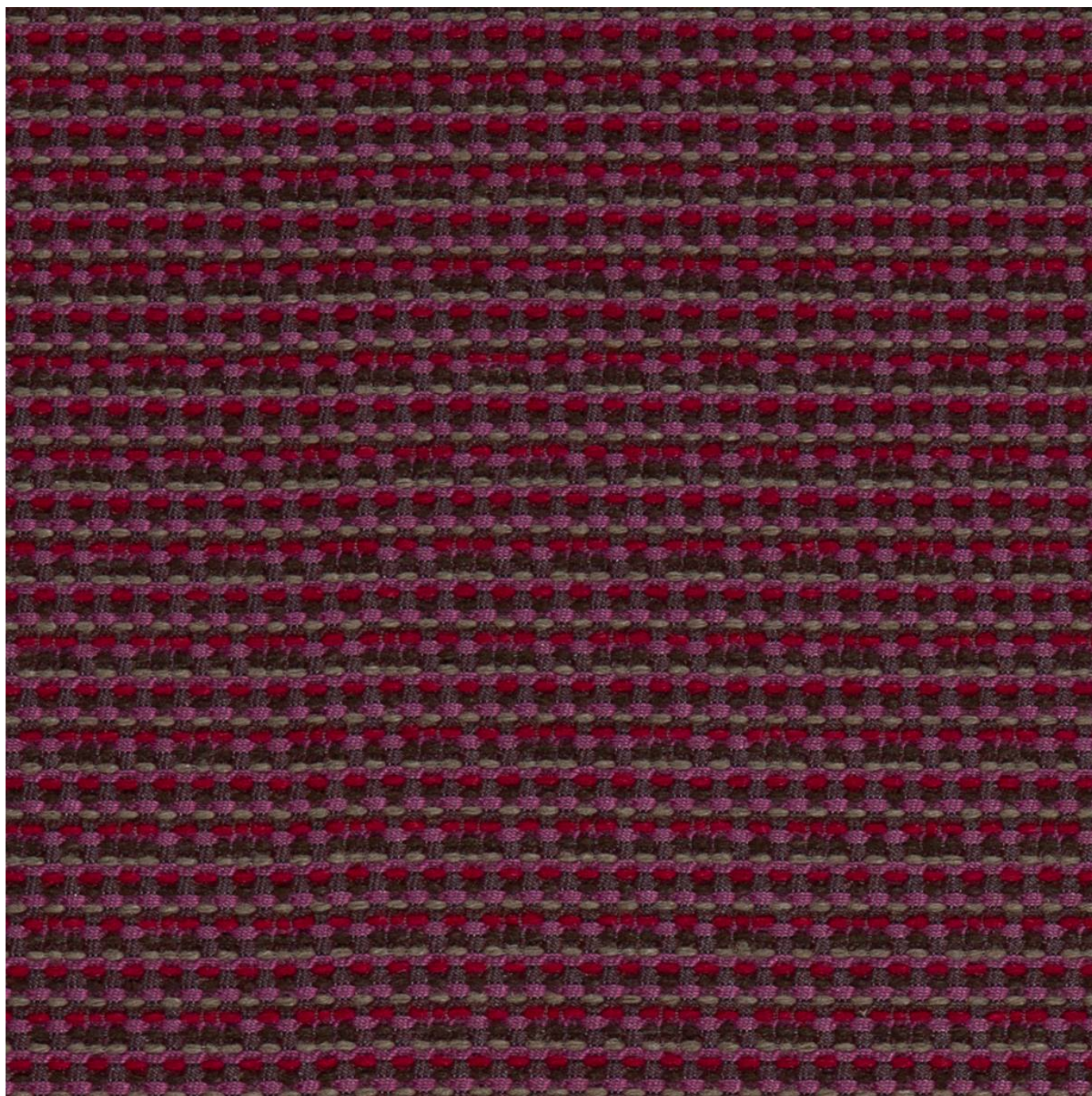


KNOT

Fabrics » Woven Fabrics



Brand: **Burch**

Applications: **Upholstery**

1300 306 399

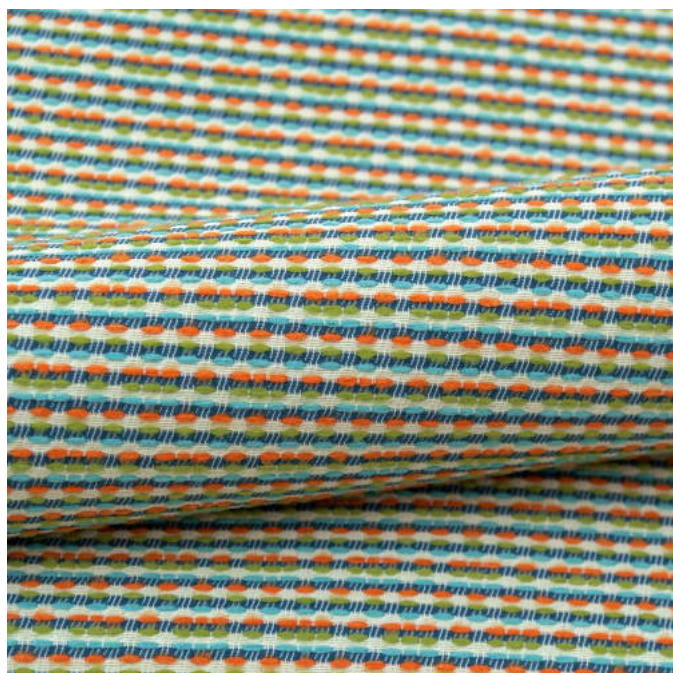
info@baresque.com.au

baresque.com.au

1 of 5

KNOT

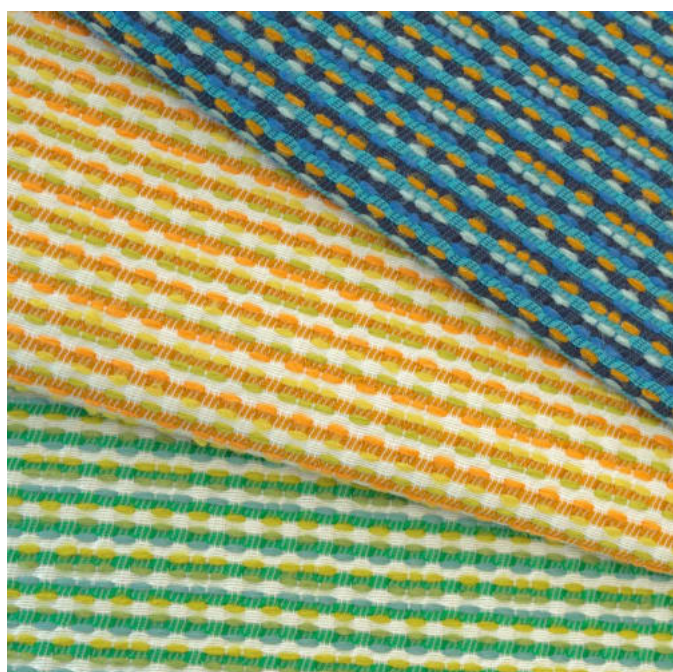
Fabrics » Woven Fabrics



knot_promo-1.jpg



knot_promo-2.jpg



knot_promo-3.jpg



knot_promo-4.jpg

1300 306 399

info@baresque.com.au

baresque.com.au

2 of 5

KNOT

Fabrics » Woven Fabrics

Knot is a 137cm wide woven upholstery that's available in 12 colorways, stain repellent, UV resistant and bleach cleanable. For indoor and outdoor

- | | | |
|---|---------------------------|------------------------------------|
| ✓ Bleach Cleanable | ✓ Outdoor Suitable | ✓ Bella-Dura Seating Fabric |
| ✓ Enhanced soil + stain resistance | ✓ UV Resistance | ✓ Solution Dyed Yarns |

Description	<p>Knot by Bella-Dura features a nubby chenille for an amplified 3D aesthetic. Features + Benefits:</p> <ul style="list-style-type: none">* Soil and stain repellent* Bleach cleanable* UV resistant* Solution dyed yarns provide brilliant clear colour
Composition	100% Bella-Dura on an acrylic backing
Pattern Repeat Size	N/A
Roll Size	137cm x Approx 55m - Available by the lineal metre
Abrasion	75,000+ Double Rubs (Wyzenbeek)
Fire Rating	<p>Tested in accordance with AS1530.3</p> <p>Spread of Flame Index - 0</p> <p>Smoke Developed Index - 5</p>
Lead Time	<ul style="list-style-type: none">• 2-weeks (approx.) from Wednesday, subject to stock availability.• Additional 1-week for Western Australia.• Express delivery is available subject to a surcharge. Contact Baresque for details and pricing.

KNOT

Fabrics » Woven Fabrics

Care Instructions

One of the best ways to keep fabrics looking good is to brush off dirt before it becomes embedded in the fabrics and wipe up spills or clean soon after a stain occurs. The quicker you clean spills and stains, the easier they can be to remove.

Avoid scrubbing or any other abrasive cleaning method. Never use stiff bristles or wire brushes, as they may damage the fabric.

Wipe material with a clean, soft cloth dampened with a mild solution of liquid detergent and warm water.

Repeat using only clean water, then dry with a lint free cloth or air dry.

Avoid using wax polishes, solvents or concentrated abrasives.

For more difficult stains, dampen a soft white cloth with a solution of household bleach (10% bleach / 90% water). Rub gently. Rinse with a water dampened cloth to remove bleach concentration.

Always test in an inconspicuous area first.

If care instructions don't deliver the expected results, cease cleaning method immediately and contact Baresque for assistance.

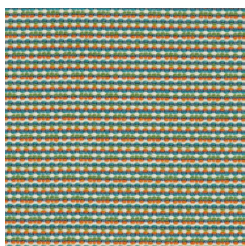
Warranty

2-year warranty. Visit baresque.com.au/warranty for complete details.

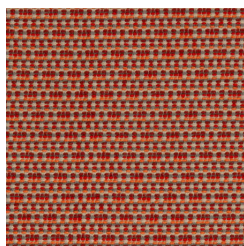
Colour & Finish Options



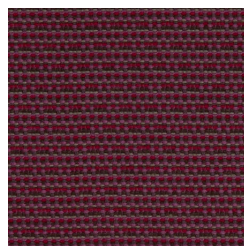
COLOURWAY CARD



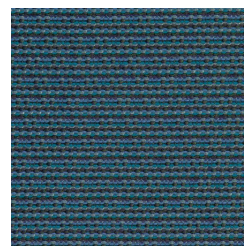
1010558 CABANA



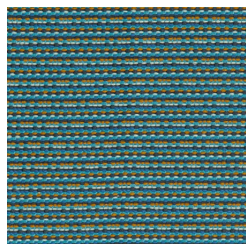
1010559 BONFIRE



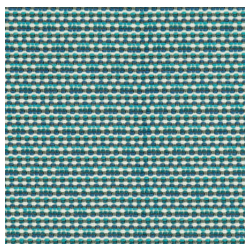
1010560 BERRY



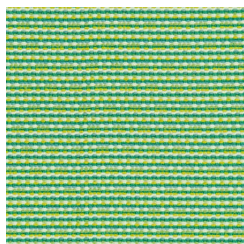
1010561 PACIFIC



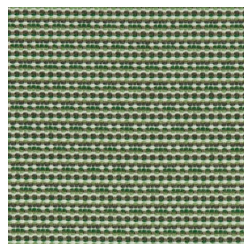
1010562 EQUATOR



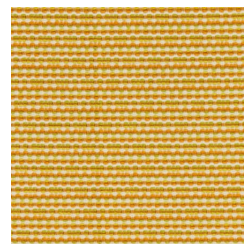
1010563 FLOAT



1010564 PALMETTO



1010565 WILLOW



1010566 CITRUS



1010567 BOARDWALK



1010568 PEARL



1010569 SANDBAR