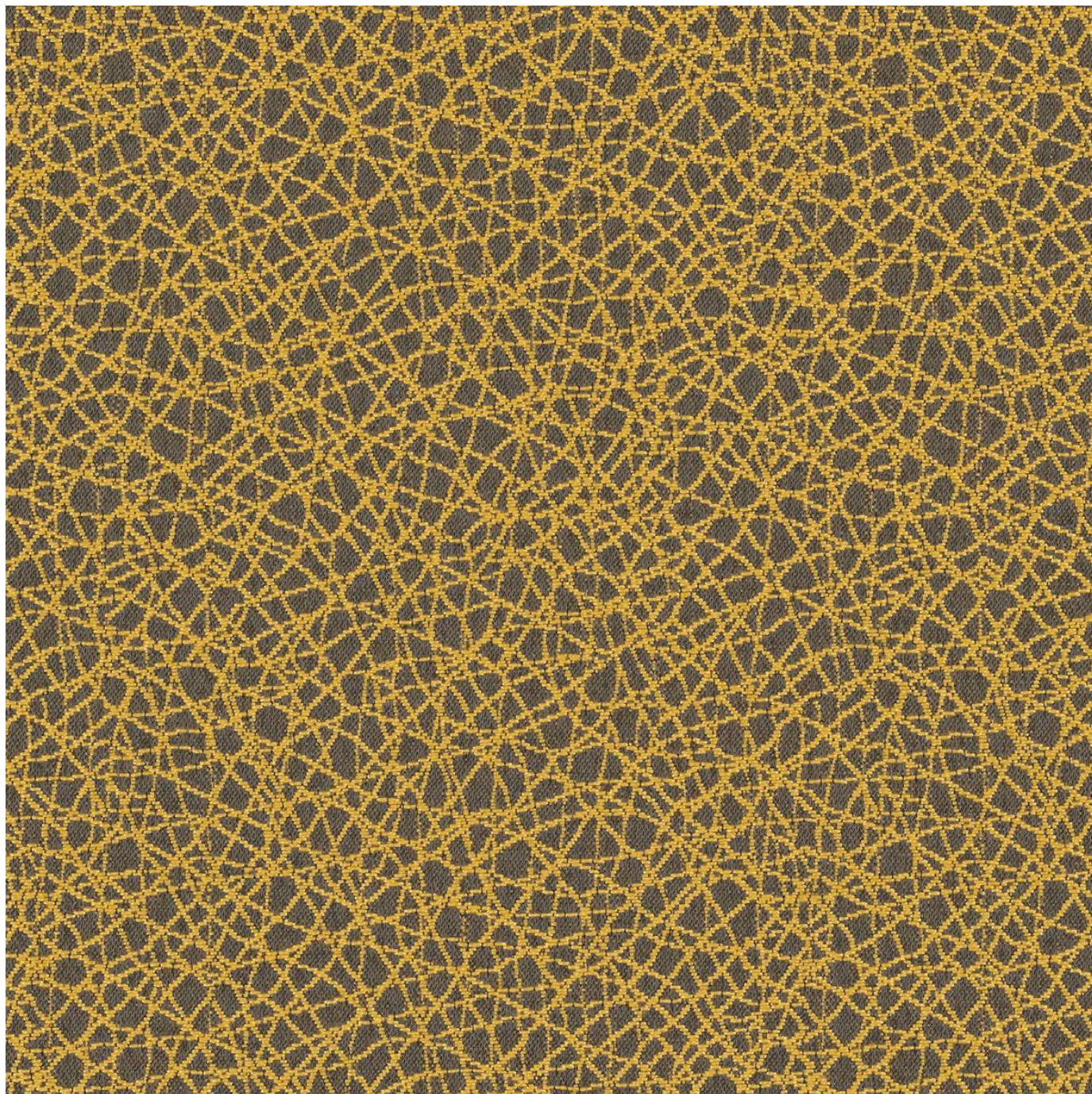


KINETIC

Fabrics » Woven Fabrics



Brand: **Crypton**

Applications: **Upholstery**

KINETIC

Fabrics » Woven Fabrics



kinetic_promo-1.jpg



kinetic_promo-2.jpg



kinetic_promo-3.jpg

KINETIC

Fabrics » Woven Fabrics

Kinetic is a 137cm wide woven upholstery with a tangled pattern that's available in 9 colourways. Suitable for indoors

Description	CRYPTON is a permanent moisture, soil resistance and anti-microbial protection backing.
Composition	CRYPTON - 100% polyester
Environmental Info	<p>Greenguard Certifications contributes towards LEED credits for low-emitting furniture and ensures compliance with Business and Institutional Furniture Manufacturers Association (BIFMA) X7.1 standard and BIFMA e3 credit 7.6.1.</p> <p>Greenguard Gold Certification standard includes:</p> <ul style="list-style-type: none">* Health-based criteria for additional chemicals and requires lower total VOC emissions levels to help ensure that products are acceptable for use in environments like schools and healthcare facilities.* Products that also comply with requirements of the state of California's Department of Public Health (CDPH) "Standard Method for the Test and Evaluation of Volatile Organic Chemical Emissions from Indoor Sources Using Environmental Chambers, Version 1.2 (2017)" (also know as California Section 01350).* Products that are compliant with the BIFMA X7.1 standard and BIFMA e3 credits 7.6.1, 7.6.2, and 7.6.3.
Pattern Repeat Size	12.7cm V x 12.7cm H
Roll Size	137cm x Approx 50m - Available by the lineal metre
Abrasion	63,000+ Double Rubs (Wyzenbeek)
Fire Rating	<p>Tested in accordance with AS1530.3</p> <p>Spread of Flame Index - 0</p> <p>Smoke Developed Index - 5</p>
Lead Time	<ul style="list-style-type: none">• 2-weeks (approx.) from Wednesday, subject to stock availability.• Additional 1-week for Western Australia.• Express delivery is available subject to a surcharge. Contact Baresque for details and pricing.

KINETIC

Fabrics » Woven Fabrics

Care Instructions

Mix 5 parts water with 1 part of an enzyme laundry detergent to have a mixture that works well on all stains.

Most liquid spills simply blot off the surface with a dry towel. If a stain remains, follow these simple steps:

1. Remove excess soil, and apply the soap mixture on the stained area
2. Allow solution to remain on stain for 1 minute
3. Blot up the stain with a dry, clean towel, rinse any remaining soap and blot the area again

Repeat these steps if a spot still remains. If agitation is necessary, spray the stained area and work the stain using a soft brush or edge of spoon from outside of spot toward the middle. Blot and rinse to remove any soap.

Warranty

2-year warranty. Visit baresque.com.au/warranty for complete details.

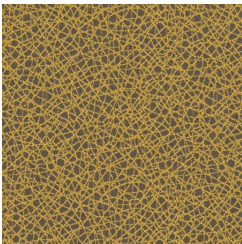
KINETIC

Fabrics » Woven Fabrics

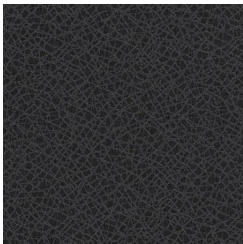
Colour & Finish Options

COLOURWAY CARD

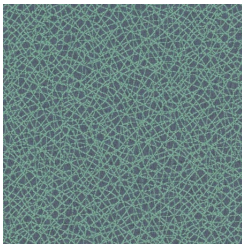
COLOURWAY CARD



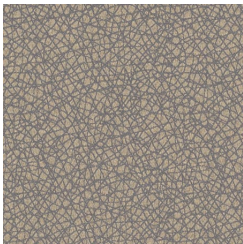
64429 ACACIA



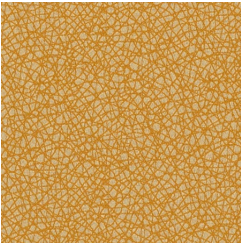
64436 AFTER DARK



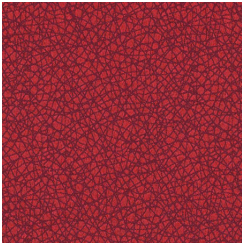
64435 BERING



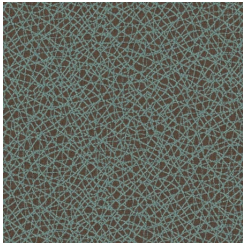
64437 CADMIUM



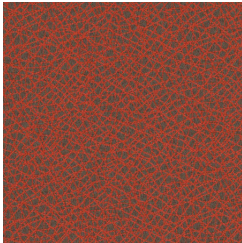
64434 GINGER



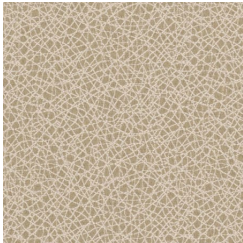
64432
POMEGRANATE



64431 SHALE



64430 SUNSET



64433 QUARTZ