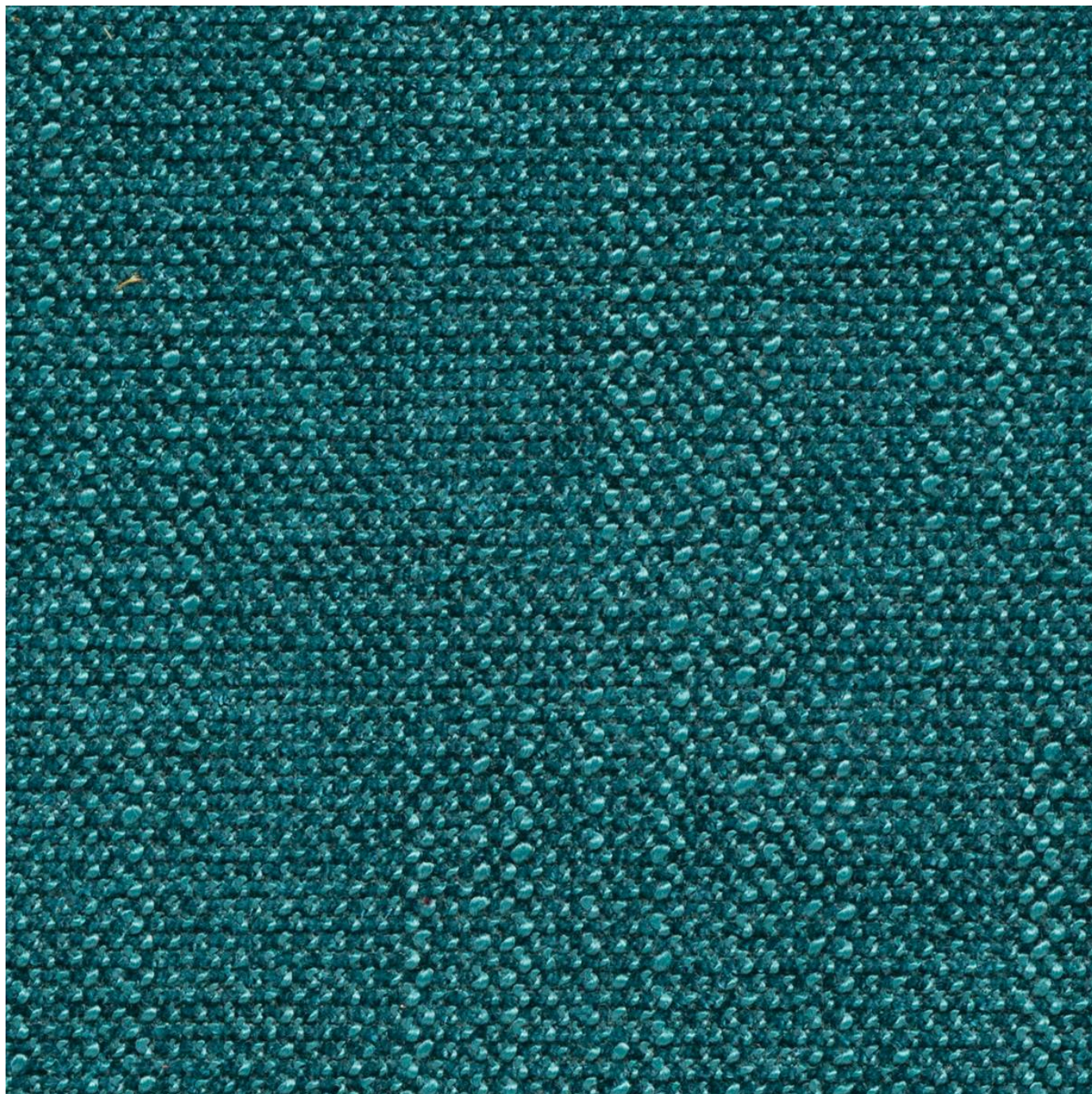


# HOMESTEAD

Fabrics » Woven Fabrics

---



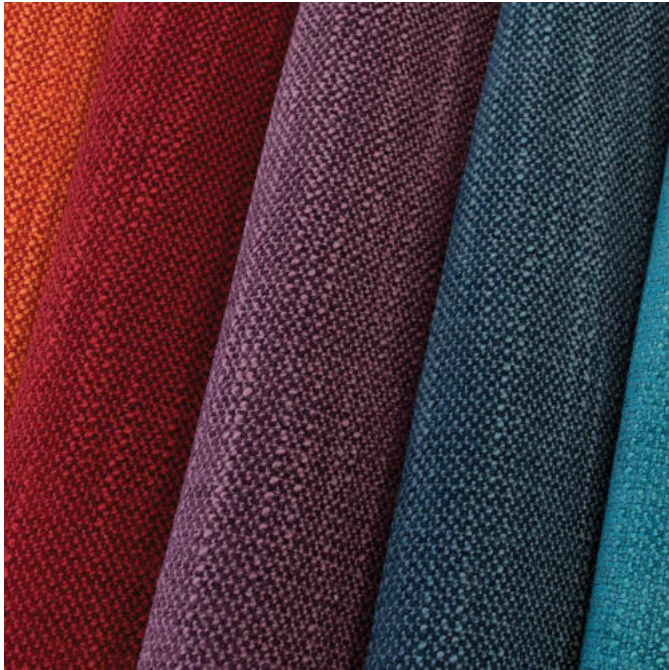
Brand: **Crypton**

Applications: **Upholstery**

# HOMESTEAD

**Fabrics** » Woven Fabrics

---



homestead1.jpg

# HOMESTEAD

Fabrics » Woven Fabrics

Homestead is a 137cm wide woven upholstery with a twisted yarns that creates a nubby texture with a subtle vertical striae. available in 14 colours.

Description	Twisted yarns create a nubby texture with a subtle vertical striae. Homestead is offered in a wide array of color options ranging from cool neutrals to punchy brights. CRYPTON is a permanent moisture, soil resistance and anti-microbial protection backing.
Composition	CRYPTON - 100% polyester
Pattern Repeat Size	N/A
Roll Size	137cm x Approx 45m - Available by the lineal metre
Abrasion	50,000+ Double Rubs (Wyzenbeek)
Fire Rating	This product can be treated with a fire retardant that will ensure it meets Australian Standard 1530.3. Contact Baresque for details.
Lead Time	<ul style="list-style-type: none"><li>• 2-weeks (approx.) from Wednesday, subject to stock availability.</li><li>• Additional 1-week for Western Australia.</li><li>• Express delivery is available subject to a surcharge. Contact Baresque for details and pricing.</li></ul>
Care Instructions	<p>Always use a clean, white, soft cloth.</p> <p>Prepare a mixture of 1/3 Napisan and 2/3 Fab. Combine the mixture with water to make a paste about the consistency of soft margarine i.e. not too runny. Apply using a soft bristle brush. Leave for 10 minutes.</p> <p>Use a brush and clean, warm water to remove the paste being sure to renew the water so that it remains clean.</p> <p>Never use stiff bristles or wire brushes, as they may damage the fabric. To prevent soil build-up, frequent vacuuming is recommended.</p> <p>Using a cloth to pat dry will help eliminate watermarks.</p> <p>For more difficult stains, dampen a soft white cloth with a solution of household bleach (10% bleach / 90% water). Rub gently. Rinse with a water dampened cloth to remove bleach concentration.</p> <p>Always test in an inconspicuous area first. If care instructions don't deliver the expected results, cease cleaning method immediately and contact Baresque for assistance.</p>

# HOMESTEAD

**Fabrics** » Woven Fabrics

---

## Warranty

2-year warranty. Visit [baresque.com.au/warranty](https://baresque.com.au/warranty) for complete details.

---

# HOMESTEAD

Fabrics » Woven Fabrics

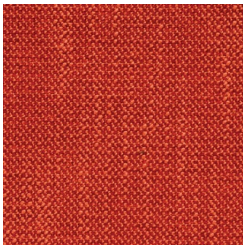
## Colour & Finish Options



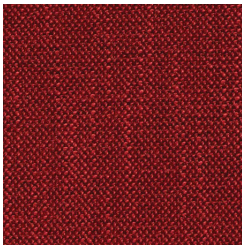
1009109 MOSS



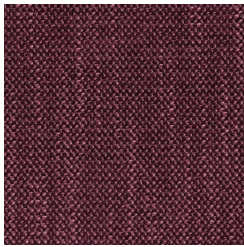
1009110 CHARTREUSE



1009111 TORCH



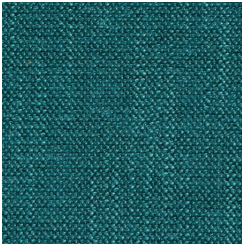
1009112 RUBY



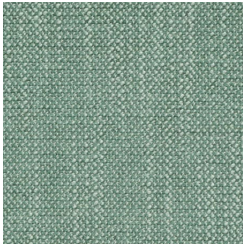
1009113 REGAL



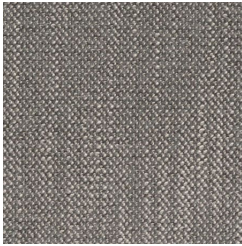
1009114 ATLANTIC



1009115 TIDE



1009116 SPA



1009117 CASTLE



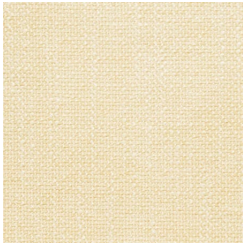
1009118 STRATUS



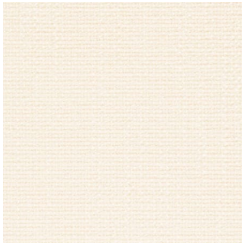
1009119 CATHEDRAL



1009120 CINDER



1009121 OYSTER



1009122 ECHO