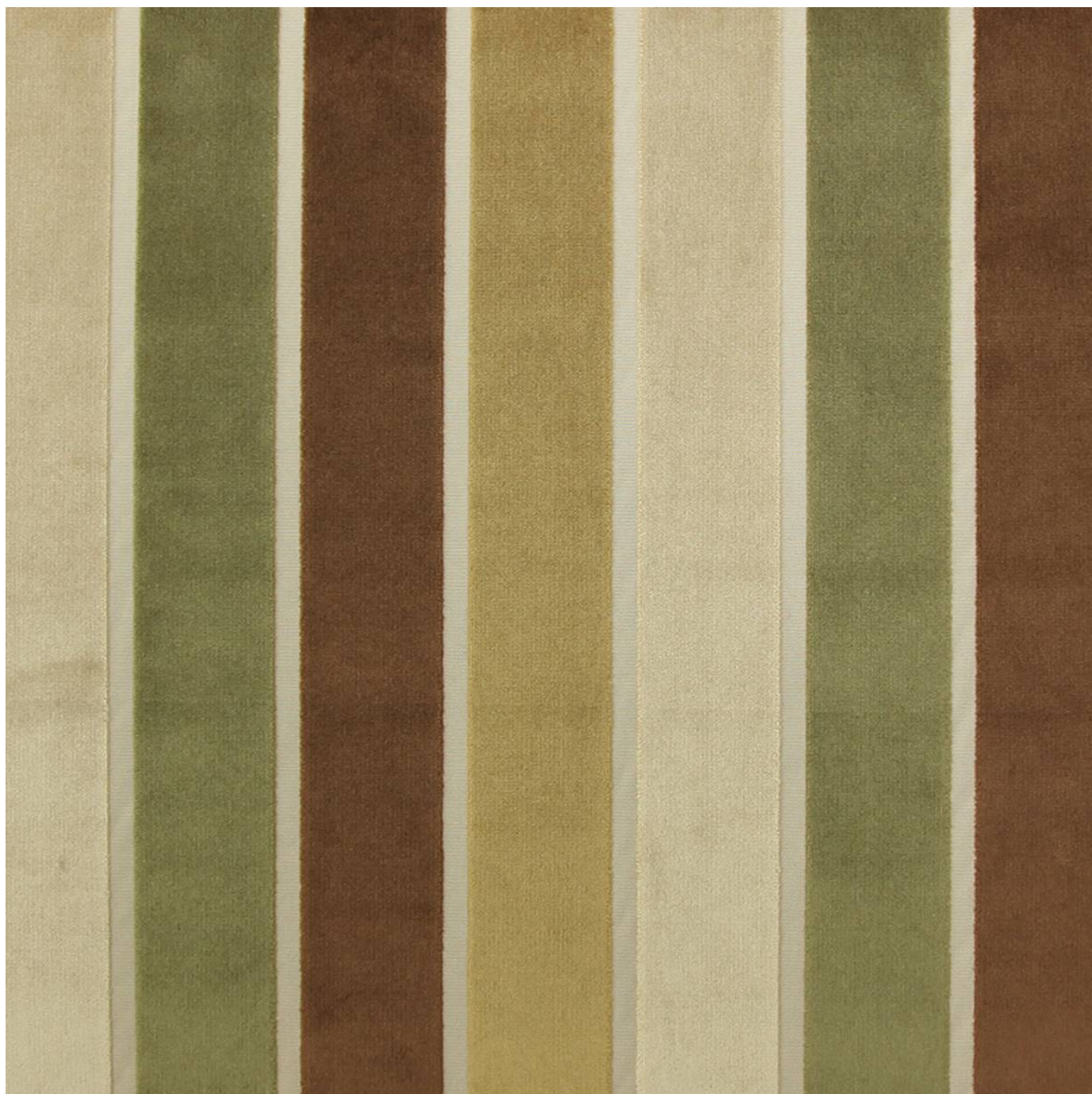


# HEPBURN

Fabrics » Woven Fabrics

---



Brand: **Panaz**

Applications: **Upholstery**

1300 306 399

[info@baresque.com.au](mailto:info@baresque.com.au)

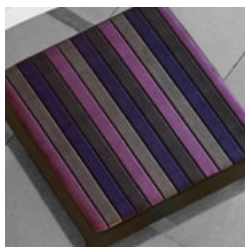
[baresque.com.au](http://baresque.com.au)

1 of 4

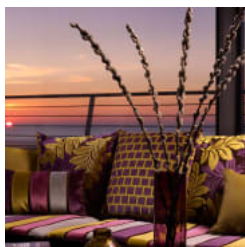
# HEPBURN

**Fabrics** » Woven Fabrics

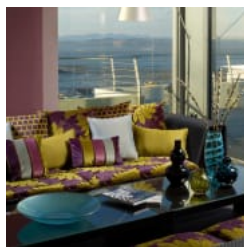
---



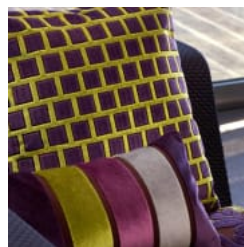
hepburn\_promo-4.jpg



hepburn\_promo-3.jpg



hepburn\_promo-2.jpg



hepburn\_promo-1.jpg

# HEPBURN

Fabrics » Woven Fabrics

Hepburn is a 135cm wide woven upholstery with a colourful regency pattern that's available in 10 colourways. Suitable for indoor only

|                     |  |
|---------------------|--|
| Composition         | 28.5% acrylic, 28% polyester, 15% viscose, 28.5% kanecaron   |
| Pattern Repeat Size | N/A  |
| Roll Size           | 135cm x N/A - Available by the lineal metre. MINIMUM ORDER 4 METRES.   |
| Abrasion            | 56,000 double rubs Wyzenbeek / 40,000 + Martindale rubs  |
| Fire Rating         | This product can be treated with a fire retardant that will ensure it meets Australian Standard 1530.3. Contact Baresque for details.  |
| Lead Time           | <ul style="list-style-type: none"><li>• 2-weeks (approx.) from Wednesday, subject to stock availability.</li><li>• Additional 1-week for Western Australia.</li><li>• Express delivery is available subject to a surcharge. Contact Baresque for details and pricing.</li></ul>  |
| Care Instructions   | <p>Always use a clean, white, soft cloth.</p> <p>Clean in situ using a damp cloth and mild detergent. Sponge down afterwards with a clean, damp cloth.</p> <p>Using a cloth to pat dry will help eliminate watermarks.</p> <p>Ensure the pile is brushed back to its natural direction.</p> <p>Upholstered furniture should be regularly vacuumed or brushed with a soft nylon brush to remove grit or dust, which may damage the pile.</p> <p>Never use stiff bristles or wire brushes, as they may damage the fabric.</p> <p>Always test in an inconspicuous area first. If care instructions don't deliver the expected results, cease cleaning method immediately and contact Baresque for assistance.</p> |
| Warranty            | 2-year warranty. Visit <a href="https://baresque.com.au/warranty">baresque.com.au/warranty</a> for complete details.   |

# HEPBURN

Fabrics » Woven Fabrics

## Colour & Finish Options



191 INDIGO - FAWN



264 LIME - PURPLE



275 LIME - MINK



300 GOLD



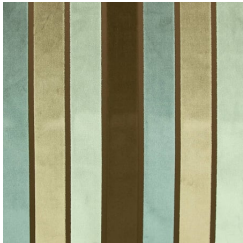
400 RED



411 SPICE



439 RASPBERRY



713 MINK - DUCK EGG



745 MINK - PURPLE



791 MOCHA