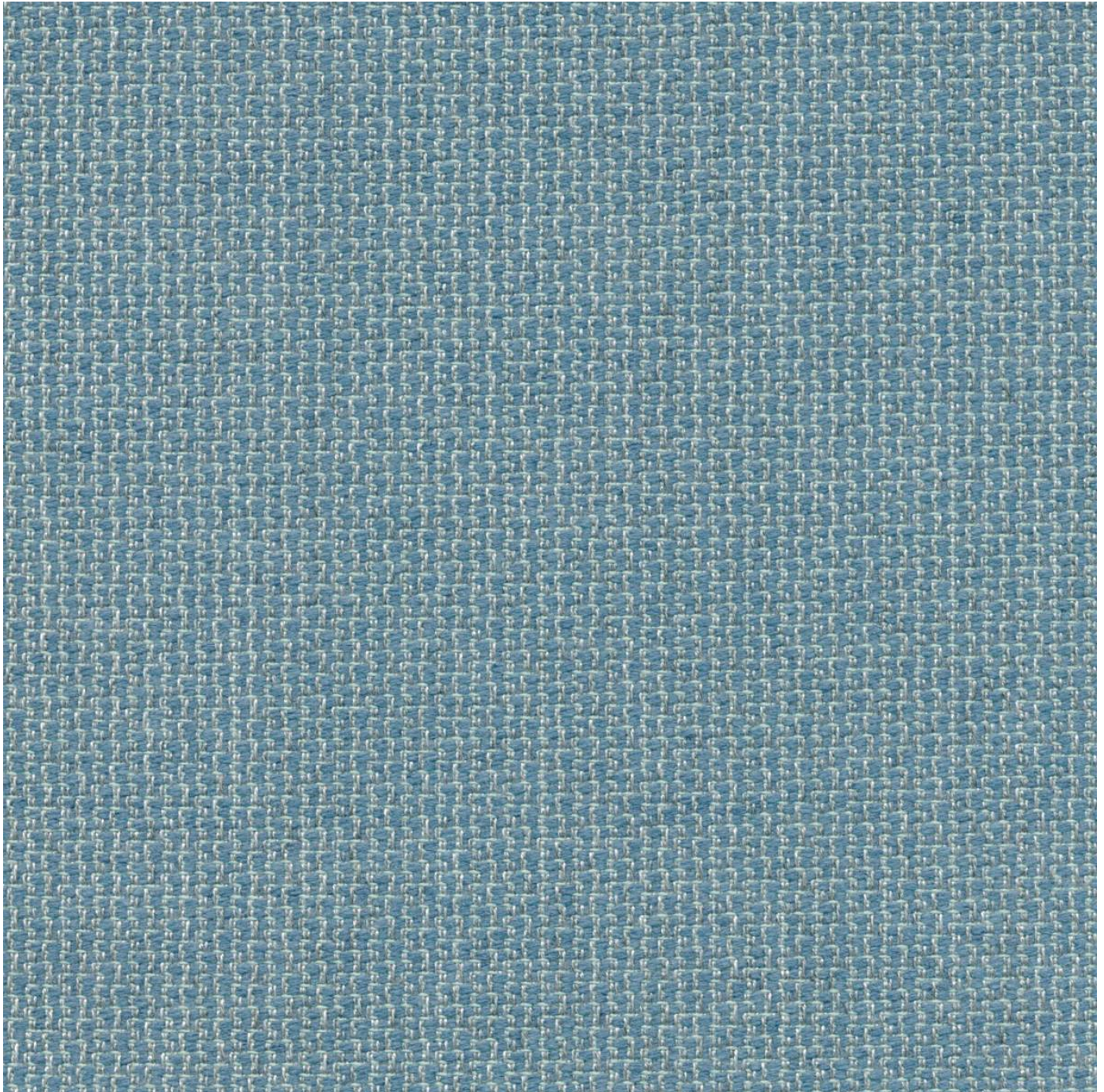


GRANITE

Fabrics » Woven Fabrics



Brand: **Sunbrella**

Applications: **Upholstery**

1300 306 399

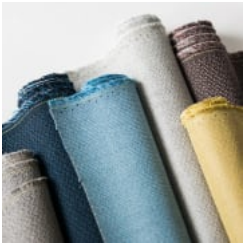
info@baresque.com.au

baresque.com.au

1 of 5

GRANITE

Fabrics » Woven Fabrics



granite_promo-4.jpg

GRANITE

Fabrics » Woven Fabrics

Granite combines yarns with multiple fiber colours to create a soft, fluctuation in color that is reminiscent of wool that's available in 12 colours

- ✓ **Bleach Cleanable**
- ✓ **Environmentally Friendly**
- ✓ **Extended Warranty**
- ✓ **Moisture Repellant**
- ✓ **Outdoor Suitable**
- ✓ **Solution Dyed Yarns**

Description Playful and poised, Granite adds interest to a practical textile. The indoor/outdoor textural upholstery pairs beautifully with its counterpart Marble. Granite combines yarns with multiple fiber colors to create a soft, fluctuation in color that is reminiscent of wool. Constructed with Sunbrella yarns, a water and stain repellent finishing and boasting over 100,000 double rubs, the product is created to withstand the rigorous demands of high traffic areas. Offered in 12 usable colorways, including fresh hues and soft neutrals, Granite is the indoor/outdoor performance product every designer has been in search of.

Composition 69% Sunbrella Acrylic, 30% Sunbrella Polyester, 1% polyester

Environmental Info Based on life cycle assessment principles, NSF/ANSI 336 employs an easy-to-use point system to evaluate furnishings fabric against established prerequisite requirements, performance criteria and quantifiable metrics in eight areas - Fiber Sourcing, Safety of Material, Water Conservation and Water Quality, Energy, Recycling Practices, Air Quality in Manufacturing, Social Accountability

Certification to NSF/ANSI 336 is based on point total achieve a Compliant, Silver, Gold or Platinum level.

Pattern Repeat Size 0.6cm V / 1cm H

Roll Size 137cm x Approx 45m - 55m - Available by the lineal metre

Abrasion 100,000 double rubs (Wyzenbeek)

Fire Rating Tested in accordance with AS1530.3

Spread of Flame Index - 0

Smoke Developed Index - 5

Lead Time

- 2-weeks (approx.) from Wednesday, subject to stock availability.
- Additional 1-week for Western Australia.
- Express delivery is available subject to a surcharge. Contact Baresque for details and pricing.

GRANITE

Fabrics » Woven Fabrics

Care Instructions

One of the best ways to keep fabrics looking good is to brush off dirt before it becomes embedded in the fabrics and wipe up spills or clean soon after a stain occurs. The quicker you clean spills and stains, the easier they can be to remove.

Avoid scrubbing or any other abrasive cleaning method. Never use stiff bristles or wire brushes, as they may damage the fabric.

Wipe material with a clean, soft cloth dampened with a mild solution of liquid detergent and warm water.

Repeat using only clean water, then dry with a lint free cloth or air dry.

Avoid using wax polishes, solvents or concentrated abrasives.

For more difficult stains, dampen a soft white cloth with a solution of household bleach (10% bleach / 90% water). Rub gently. Rinse with a water dampened cloth to remove bleach concentration.

Always test in an inconspicuous area first.

If care instructions don't deliver the expected results, cease cleaning method immediately and contact Baresque for assistance.

Warranty

2-year warranty. Visit [baresque.com.au/warranty](https://www.baresque.com.au/warranty) for complete details.

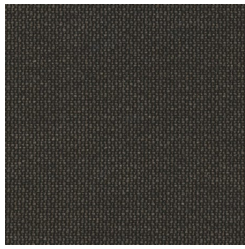
GRANITE

Fabrics » Woven Fabrics

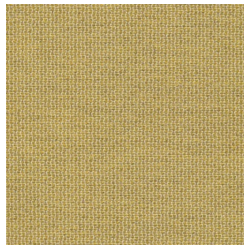
Colour & Finish Options

COLOURWAY CARD

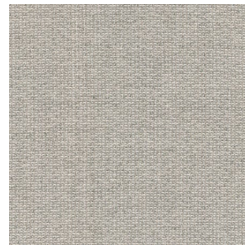
COLOURWAY CARD



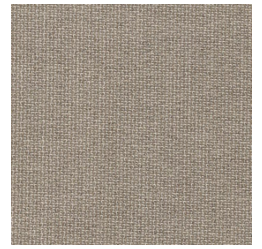
CHARCOAL



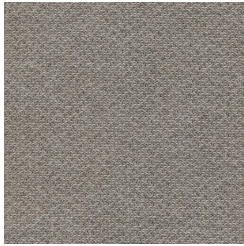
CITRON



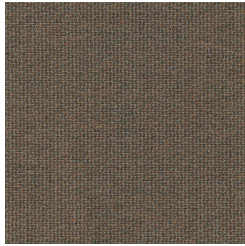
CLOUD



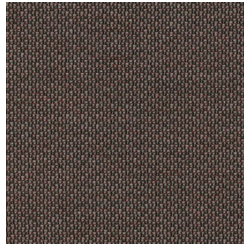
FLAX



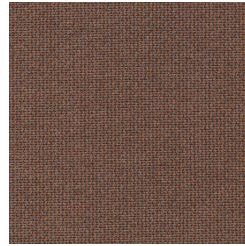
FLINT



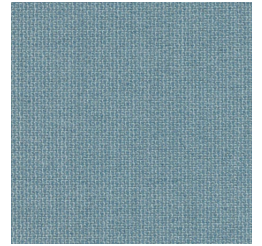
HAZEL



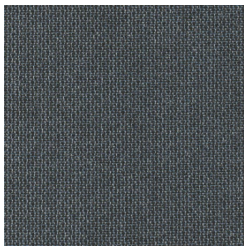
LOGWOOD



NUTMEG



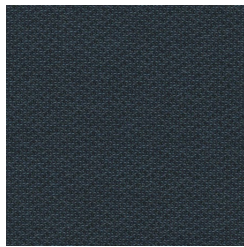
SKY



SLATE



SNOW



TIDE