

FOSTER

Fabrics » Woven Fabrics



Brand: **Sunbrella**

Applications: **Upholstery**

1300 306 399

info@baresque.com.au

baresque.com.au

1 of 4

FOSTER

Fabrics » Woven Fabrics

Foster is a 137cm wide woven upholstery with a hairline stripe pattern that's available in 2 combined colours. Suitable for indoor or outdoor.

✓ **Bleach Cleanable**

✓ **Environmentally Friendly**

✓ **Extended Warranty**

✓ **Moisture Repellent**

✓ **Outdoor Suitable**

✓ **Solution Dyed Yarns**

Description

Founded on the belief that fabrics should be both beautiful and functional, Sunbrella textiles are made with close attention to design detail, and engineered with robust performance characteristics that provide resistance to fading and degradation from sunlight and chemical exposure. The fabric is tactile yet durable, has industry-leading environmental characteristics, is easy to care for and offers long life “wherever it’s used. Each metre of Sunbrella performance fabric is a product of a global support team committed to producing only the most exceptional performance textiles you can buy.

Composition

100% Sunbrella® Acrylic

Pattern Repeat Size

17.1cm V

Roll Size

137cm x Approx 50m - Available by the lineal metre

Abrasion

30,000+ double rubs

Fire Rating

Tested in accordance with AS1530.3

Spread of Flame Index - 0

Smoke Developed Index - 5

Lead Time

- 2-weeks (approx.) from Wednesday, subject to stock availability.
- Additional 1-week for Western Australia.
- Express delivery is available subject to a surcharge. Contact Baresque for details and pricing.

FOSTER

Fabrics » Woven Fabrics

Care Instructions

One of the best ways to keep fabrics looking good is to brush off dirt before it becomes embedded in the fabrics and wipe up spills or clean soon after a stain occurs. The quicker you clean spills and stains, the easier they can be to remove.

Avoid scrubbing or any other abrasive cleaning method. Never use stiff bristles or wire brushes, as they may damage the fabric.

Wipe material with a clean, soft cloth dampened with a mild solution of liquid detergent and warm water.

Repeat using only clean water, then dry with a lint free cloth or air dry.

Avoid using wax polishes, solvents or concentrated abrasives.

For more difficult stains, dampen a soft white cloth with a solution of household bleach (10% bleach / 90% water). Rub gently. Rinse with a water dampened cloth to remove bleach concentration.

Always test in an inconspicuous area first.

If care instructions don't deliver the expected results, cease cleaning method immediately and contact Baresque for assistance.

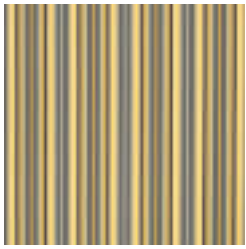
Warranty

2-year warranty. Visit baresque.com.au/warranty for complete details.

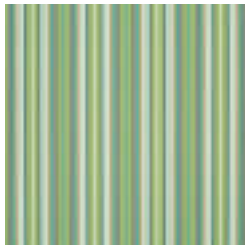
FOSTER

Fabrics » Woven Fabrics

Colour & Finish Options



56051-0000
METALLIC



56049-0000
SURFSIDE