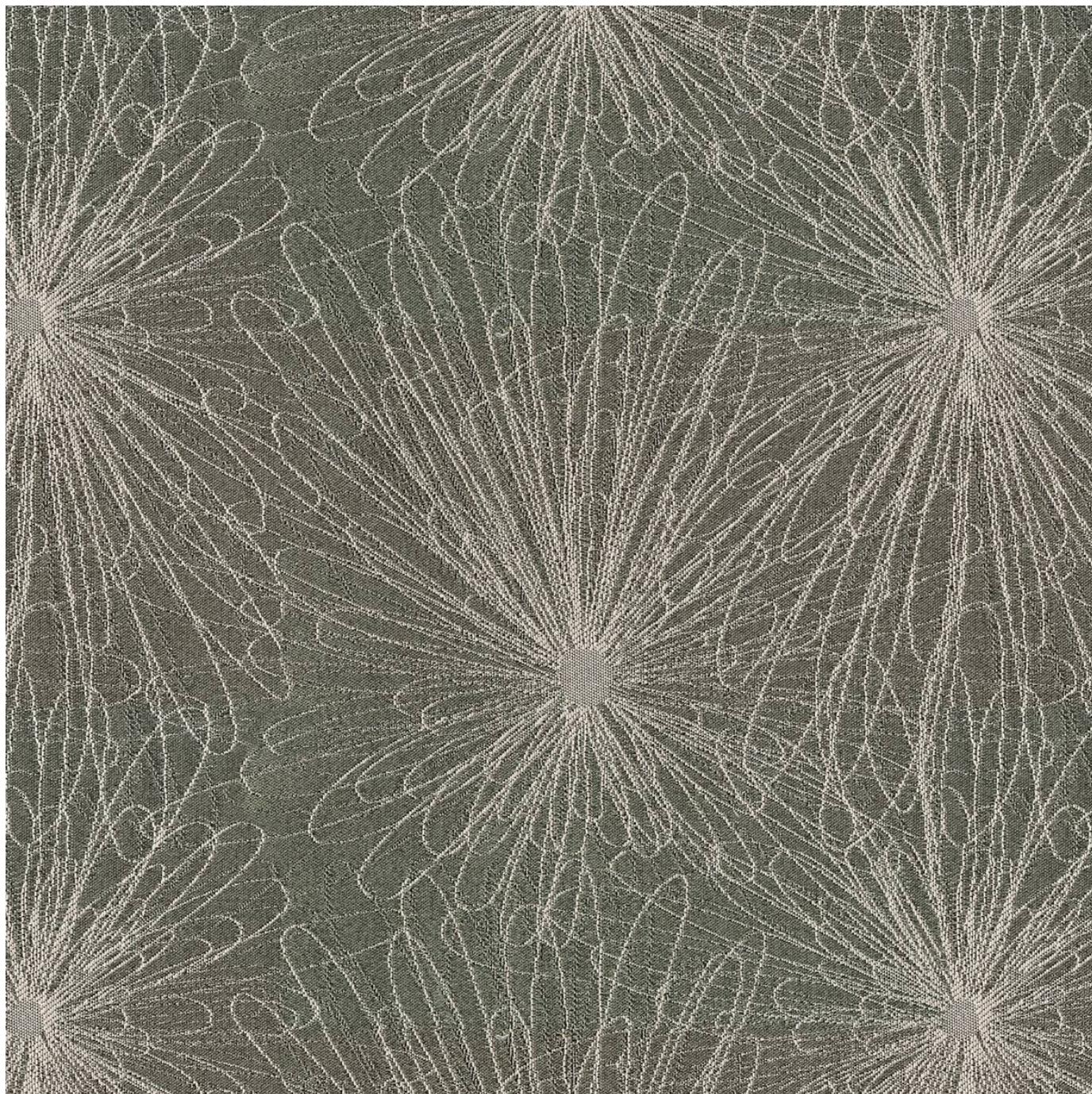


FLOURISH

Fabrics » Woven Fabrics



Brand: **Crypton**

Applications: **Upholstery**

1300 306 399

info@baresque.com.au

baresque.com.au

1 of 4

FLOURISH

Fabrics » Woven Fabrics

Flourish is a 142cm wide woven upholstery with a fine lined floral pattern that's available in 9 colours. Suitable for indoor

✓ **Bleach Cleanable**

✓ **Moisture Barrier**

Description CRYPTON is a permanent moisture, soil resistance and anti-microbial protection backing.

Composition CRYPTON - 100% polyester

Pattern Repeat Size 24.9cm V / 38.1cm H

Roll Size 142cm x Approx 45m - 55m - Available by the lineal metre

Abrasion 78,000+ double rubs Wyzenbeek

Fire Rating This product can be treated with a fire retardant that will ensure it meets Australian Standard 1530.3. Contact Baresque for details.

Lead Time

- 2-weeks (approx.) from Wednesday, subject to stock availability.
- Additional 1-week for Western Australia.
- Express delivery is available subject to a surcharge. Contact Baresque for details and pricing.

Care Instructions

Always use a clean, white, soft cloth.

Prepare a mixture of 1/3 Napisan and 2/3 Fab. Combine the mixture with water to make a paste about the consistency of soft margarine i.e. not too runny. Apply using a soft bristle brush. Leave for 10 minutes.

Use a brush and clean, warm water to remove the paste being sure to renew the water so that it remains clean.

Never use stiff bristles or wire brushes, as they may damage the fabric. To prevent soil build-up, frequent vacuuming is recommended.

Using a cloth to pat dry will help eliminate watermarks.

For more difficult stains, dampen a soft white cloth with a solution of household bleach (10% bleach / 90% water). Rub gently. Rinse with a water dampened cloth to remove bleach concentration.

Always test in an inconspicuous area first. If care instructions don't deliver the expected results, cease cleaning method immediately and contact Baresque for assistance.

FLOURISH

Fabrics » Woven Fabrics

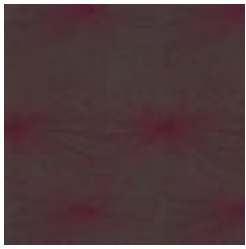
Warranty

2-year warranty. Visit [baresque.com.au/warranty](https://www.baresque.com.au/warranty) for complete details.

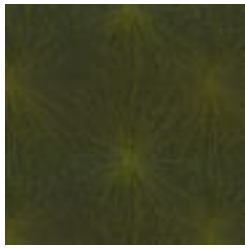
FLOURISH

Fabrics » Woven Fabrics

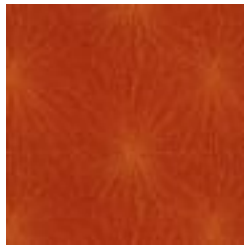
Colour & Finish Options



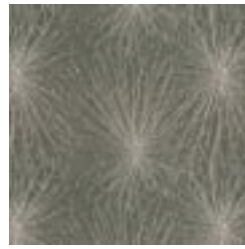
1009 SASSY PLUM



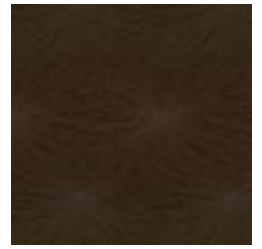
205 LIMELIGHT



44 FLAME



6009 CHINCHILLA



81 LUGGAGE



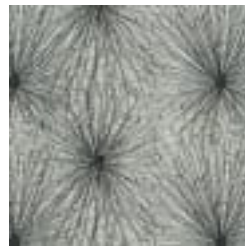
87 CIGAR



89 SMOKEY QUARTZ



91 PLATINUM



97 STERLING