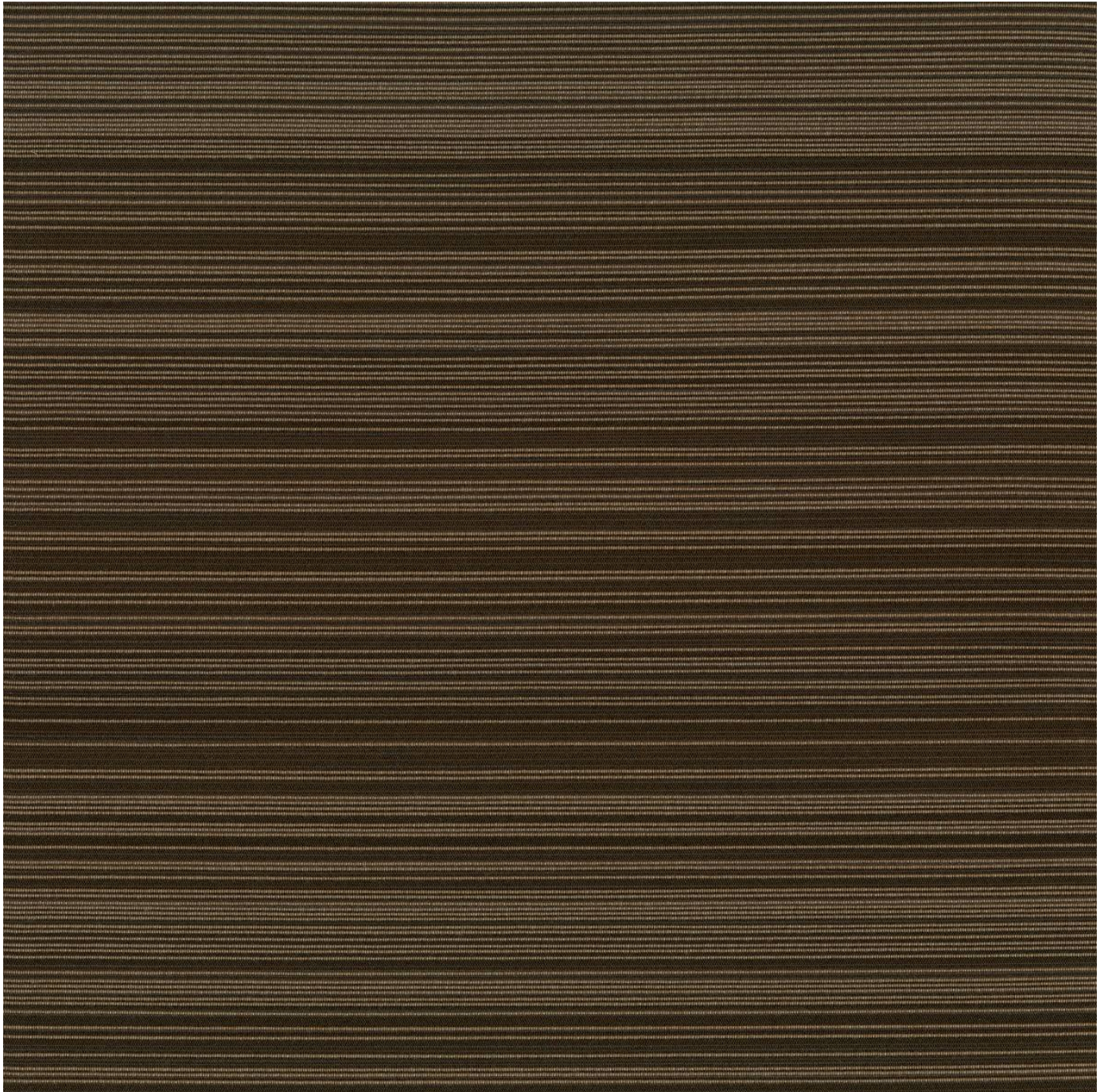


# FIELD ADVENTURE

Fabrics » Woven Fabrics

---



Brand: **Crypton**

Collection: **Adventure**

1300 306 399

[info@baresque.com.au](mailto:info@baresque.com.au)

[baresque.com.au](http://baresque.com.au)

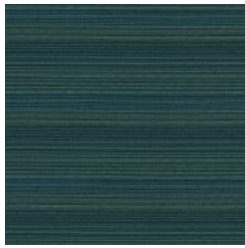
1 of 5

# FIELD ADVENTURE

Fabrics » Woven Fabrics

## COLOURWAY CARD

COLOURWAY CARD



24 DEEP TEAL



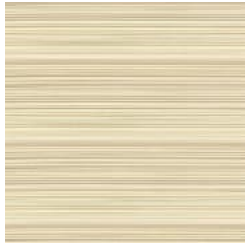
37 NAVY



405 SUNSET



6009 CHINCHILLA



61 VANILLA



702 JUNGLE



8006 COCOA



87 CHESTNUT



9009 BLACK



908 CHARCOAL

# FIELD ADVENTURE

Fabrics » Woven Fabrics

Field-Adventure is a 140cm wide woven upholstery with a thin tonal stripe pattern that's available in 10 colours.

✓ **Bleach Cleanable**

✓ **Moisture Barrier**

**Description** CRYPTON is a permanent moisture, soil resistance and anti-microbial protection backing.

**Roll Size** 140cm x Approx 45m - 55m - Available by the lineal metre.

**Composition** CRYPTON - 82% polyester, 12% recycled post industrial polyester & 6% recycled post consumer polyester with Crypton Acrylic backing

**Abrasion** 100,000+ double rubs Wyzenbeek

**Pattern Repeat Size** RAILROADED - 45.7cm V / 140cm H

**Fire Rating** This product can be treated with a fire retardant that will ensure it meets Australian Standard 1530.3. Contact Baresque for details.

**Warranty** 2-year warranty. Visit [baresque.com.au/warranty](https://baresque.com.au/warranty) for complete details.

**Lead Time**

- 2-weeks (approx.) from Wednesday, subject to stock availability.
- Additional 1-week for Western Australia.
- Express delivery is available subject to a surcharge. Contact Baresque for details and pricing.

# FIELD ADVENTURE

Fabrics » Woven Fabrics

---

## Care Instructions

Always use a clean, white, soft cloth.

Prepare a mixture of 1/3 Napisan and 2/3 Fab. Combine the mixture with water to make a paste about the consistency of soft margarine i.e. not too runny. Apply using a soft bristle brush. Leave for 10 minutes.

Use a brush and clean, warm water to remove the paste being sure to renew the water so that it remains clean.

Never use stiff bristles or wire brushes, as they may damage the fabric. To prevent soil build-up, frequent vacuuming is recommended.

Using a cloth to pat dry will help eliminate watermarks.

For more difficult stains, dampen a soft white cloth with a solution of household bleach (10% bleach / 90% water). Rub gently. Rinse with a water dampened cloth to remove bleach concentration.

Always test in an inconspicuous area first. If care instructions don't deliver the expected results, cease cleaning method immediately and contact Baresque for assistance.

---

# FIELD ADVENTURE

Fabrics » Woven Fabrics

---

## Colour & Finish Options