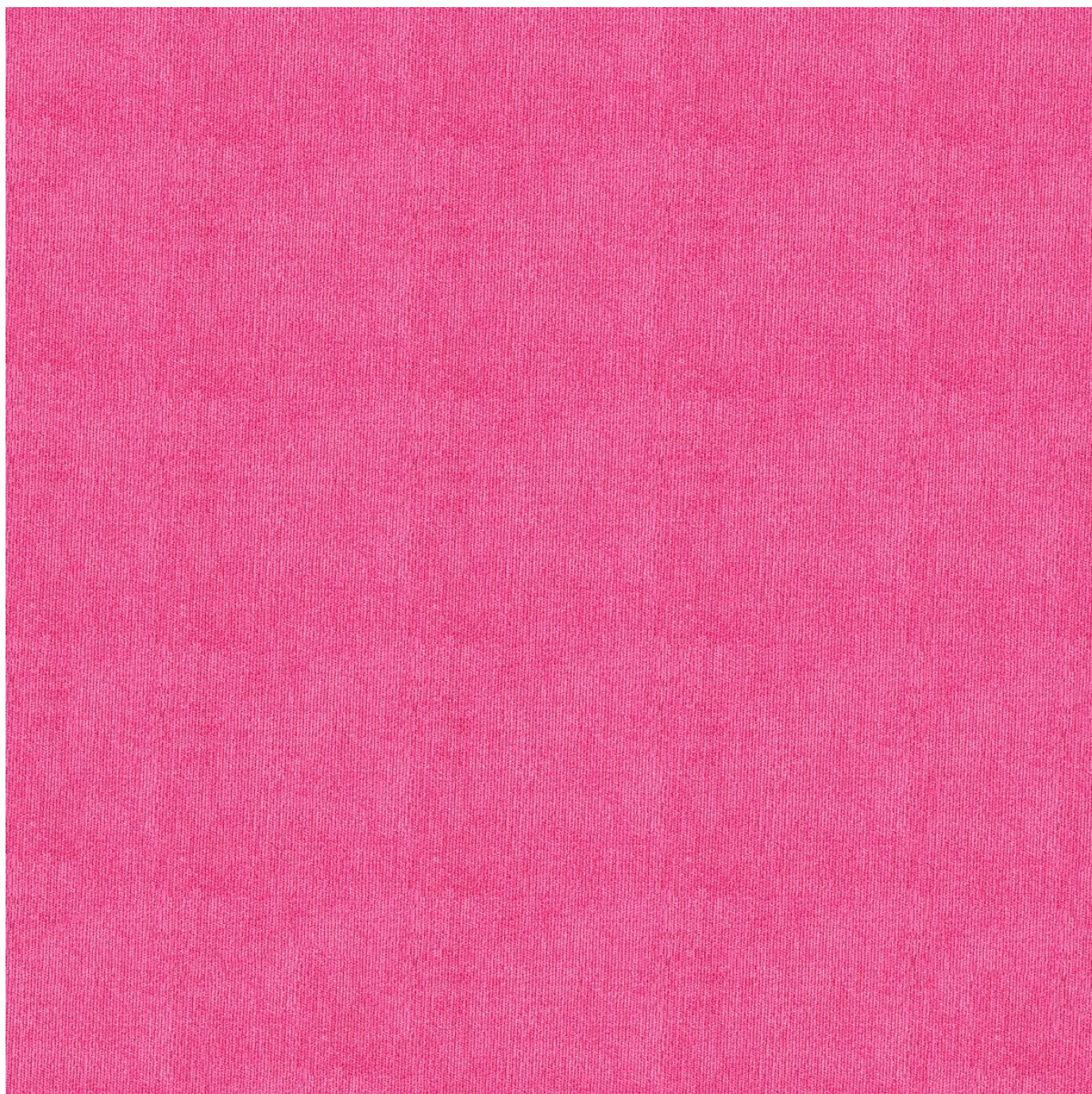


ENDUREPEL ROYAL FUNDAMENTALS

Fabrics » Woven Fabrics



Brand: **Endurepel**

Applications: **Upholstery**

1300 306 399

info@baresque.com.au

baresque.com.au

1 of 4

ENDUREPEL ROYAL FUNDAMENTALS

Fabrics » Woven Fabrics

Endurepel Royal is a 144cm wide woven upholstery that's available in 5 classic colours. Easy to clean, anti-bacterial and water repellent.

✓ **Moisture Repellant**

✓ **Anti-Bacterial**

✓ **Anti-Microbial**

Description The Fundamentals range features 75 coordinating textures and semi-plains that come standard with Endurepel Shield performance finish to repel liquid and make the upholsteries anti-microbial and anti-bacterial. Add Endurepel Barrier for a complete moisture barrier.

Composition Endurepel Shield - 100% polyester with a polyester/cotton backing Add Endurepel Barrier for a complete moisture barrier.

Pattern Repeat Size 25.6cm V / 35.8cm H

Roll Size 144cm x Approx 45m - 55m - Available by the lineal metre.

Abrasion 28,000+ Double Rubs (Wyzenbeek)

Fire Rating Tested in accordance with AS1530.3
Spread of Flame Index - 0
Smoke Developed Index - 5

Lead Time

- 3-weeks (approx) from Wednesday subject to stock availability.
- Additional 1-week for Western Australia.
- Additional 2 weeks for Endurepel Barrier.
- Express delivery is available subject to a surcharge. Contact Baresque for details and pricing.

ENDUREPEL ROYAL FUNDAMENTALS

Fabrics » Woven Fabrics

Care Instructions

Always use a clean, white, soft cloth.

Clean in situ using a damp cloth and mild detergent. Sponge down afterwards with a clean, damp cloth.

Using a cloth to pat dry will help eliminate watermarks.

Ensure the pile is brushed back to its natural direction.

Upholstered furniture should be regularly vacuumed or brushed with a soft nylon brush to remove grit or dust, which may damage the pile.

Never use stiff bristles or wire brushes, as they may damage the fabric.

Always test in an inconspicuous area first. If care instructions don't deliver the expected results, cease cleaning method immediately and contact Baresque for assistance.

Warranty

2-year warranty. Visit baresque.com.au/warranty for complete details.

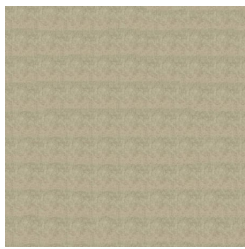
Additional Comments

Add Endurepel Barrier for full Moisture Barrier

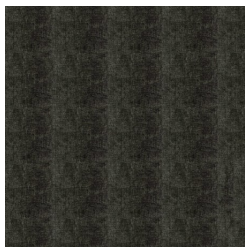
ENDUREPEL ROYAL FUNDAMENTALS

Fabrics » Woven Fabrics

Colour & Finish Options



84 PEWTER



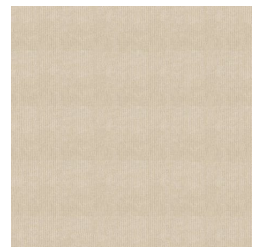
90 CHARCOAL



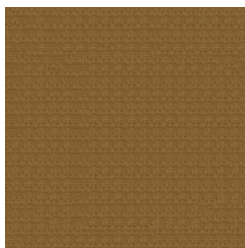
108 RED WINE



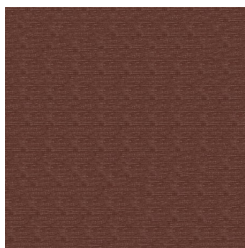
308 MIDNIGHT BLUE



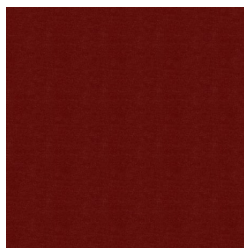
6003 LINEN



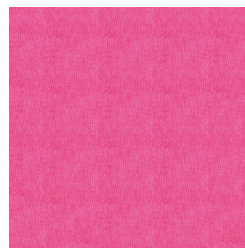
LIGHT BROWN



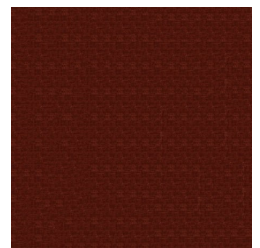
18 BLUSH



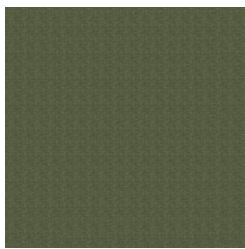
14 POPPY RED



19 HOT PINK



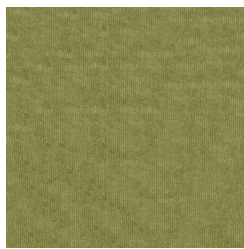
17 BURGUNDY



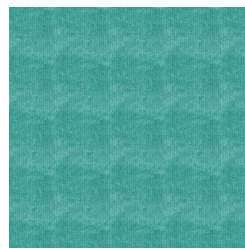
24 LIGHT GREEN



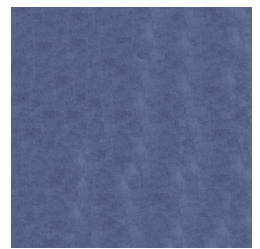
34 STEEL BLUE



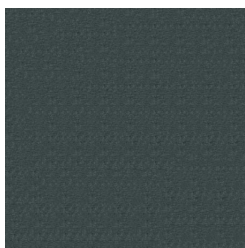
28 CELERY



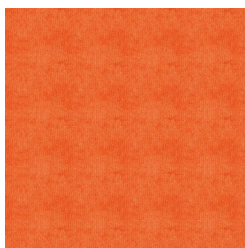
35 SEABREEZE



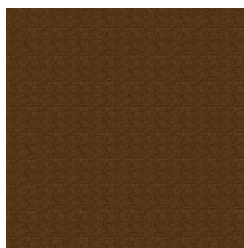
36 BLUE SHOCK



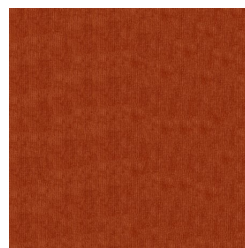
37 OCEAN



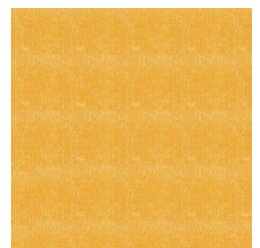
45 TANGERINE



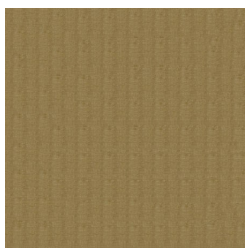
87 CHOCOLATE



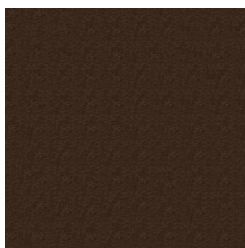
4006 HENNA



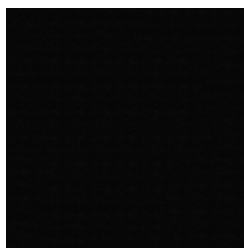
5009 BUTTER



6009 SAND



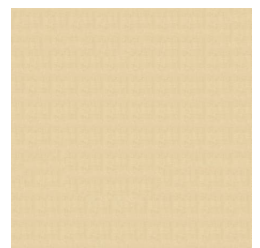
8009 DEEP BROWN



9009 BLACK



27 AVOCADO



67 CREAM