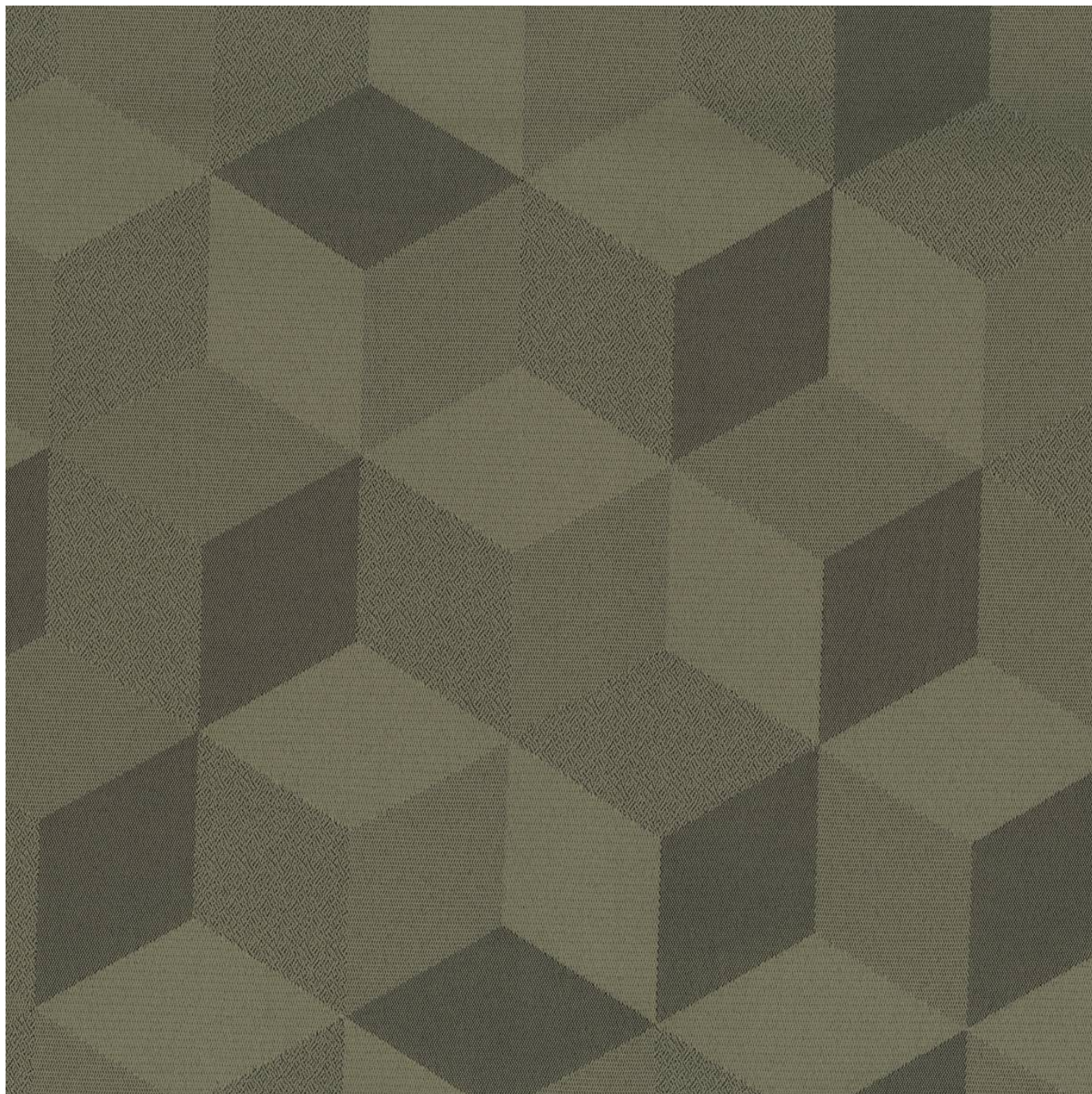


ENDUREPEL RESILIENT STABILITY III

Fabrics » Woven Fabrics



Brand: **Endurepel**

Applications: **Upholstery**

1300 306 399

info@baresque.com.au

baresque.com.au

1 of 4

ENDUREPEL RESILIENT STABILITY III

Fabrics » Woven Fabrics

Endurepel Resilient is a 149cm wide woven upholstery with a geometric cubicle pattern that's available in 3 colours. Suitable for indoor

✓ **Moisture Repellant**

✓ **Anti-Bacterial**

✓ **Anti-Microbial**

Description

Stability III is a collection of 80 contract-rated jacquards and solids finished with Endurepel Shield.

Featuring a wide selection of textures, including soft chenilles the collection has contract-rated performance and washability making it perfect for a variety of markets including hospitality, aged care and commercial.

The Endurepel Shield performance finish repels liquid and makes the upholsteries anti-microbial and anti-bacterial. Add Endurepel Barrier for a complete moisture barrier.

Composition

Endurepel Shield - 100% polyester Add Endurepel Barrier for a complete moisture barrier.

Pattern Repeat Size

30.1cm V / 38.6cm H

Roll Size

149cm x Approx 45m - 55m - Available by the lineal metre.

Abrasion

105,000+ Double Rubs (Wyzenbeek)

Fire Rating

Tested in accordance with AS1530.3

Spread of Flame Index - 0

Smoke Developed Index - 5

Lead Time

- 2-weeks (approx.) from Wednesday, subject to stock availability.
- Additional 1-week for Western Australia.
- Express delivery is available subject to a surcharge. Contact Baresque for details and pricing.

ENDUREPEL RESILIENT STABILITY III

Fabrics » Woven Fabrics

Care Instructions

Always use a clean, white, soft cloth.

Clean in situ using a damp cloth and mild detergent. Sponge down afterwards with a clean, damp cloth.

Using a cloth to pat dry will help eliminate watermarks.

Ensure the pile is brushed back to its natural direction.

Upholstered furniture should be regularly vacuumed or brushed with a soft nylon brush to remove grit or dust, which may damage the pile.

Never use stiff bristles or wire brushes, as they may damage the fabric.

Always test in an inconspicuous area first. If care instructions don't deliver the expected results, cease cleaning method immediately and contact Baresque for assistance.

Warranty

2-year warranty. Visit baresque.com.au/warranty for complete details.

Additional Comments

Add Endurepel Barrier for full Moisture Barrier

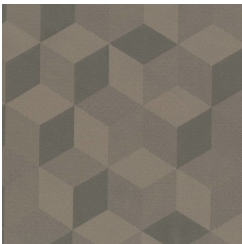
ENDUREPEL RESILIENT STABILITY III

Fabrics » Woven Fabrics

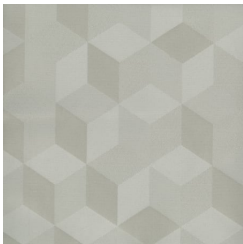
Colour & Finish Options



87 CHOCOLATE



102 QUARTZ



902 BIRCH